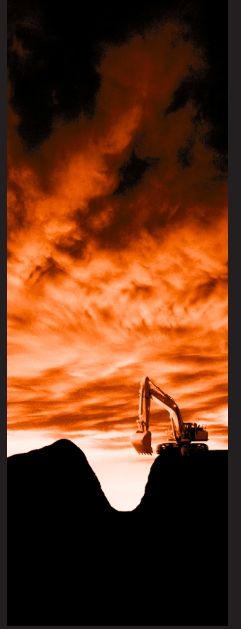
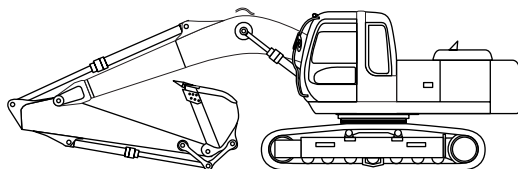


HITACHI ZAXIS210

engine rated power
108 kW / 147 HP

operating weight
19 600 - 22 200 kg

bucket capacity
PCSA heaped : 0.51 - 1.20 m³
CECE heaped : 0.45 - 1.00 m³



HITACHI

Engine

Model	Isuzu AA-6BG1T
Type	4-cycle water-cooled, direct injection
Aspiration	Turbocharged, intercooled
No. of cylinders	6
Rated power	
DIN 6271, net	H/P mode: 110 kW (150 PS) at 2 100 min ⁻¹ (rpm) P mode: 103 kW (140 PS) at 1 900 min ⁻¹ (rpm)
SAE J1349, net	H/P mode: 108 kW (147 HP) at 2 100 min ⁻¹ (rpm) P mode: 101 kW (137 HP) at 1 900 min ⁻¹ (rpm)
Maximum torque	550 Nm (56 kgf/m) at 1 600 min ⁻¹ (rpm)
Piston Displacement	6.494 l
Bore and stroke	105 mm x 125 mm
Batteries	2 x 12 V / 97 Ah
Governor	Mechanical speed control with stepping motor

Hydraulic system

- Work mode selector
Digging mode / Attachment mode
- Engine speed sensing system

Main pumps	2 variable displacement axial piston pumps
Maximum oil flow	2 x 194 l/min
Pilot pump	1 gear pump
Maximum oil flow	32 l/min

HYDRAULIC MOTORS

Travel	2 variable displacement axial piston motors
Swing	1 axial piston motor

RELIEF VALVE SETTINGS

Implement circuit	34.3 MPa (350 kgf/cm ²)
Swing circuit	30.4 MPa (310 kgf/cm ²)
Travel circuit	34.3 MPa (350 kgf/cm ²)
Pilot circuit	3.9 MPa (40 kgf/cm ²)
Power boost	36.3 MPa (370 kgf/cm ²)

HYDRAULIC CYLINDERS

High-strength piston rods and tubes. Cylinder cushion mechanisms provided in boom and arm cylinders to absorb shock at stroke ends.

DIMENSIONS

	Quantity	Bore	Rod diameter
Boom	2	120 mm	85 mm
Arm	1	135 mm	95 mm
Bucket	1	115 mm	80 mm

HYDRAULIC FILTERS

Hydraulic circuits use high-quality hydraulic filters. A suction filter is incorporated in the suction line, and full-flow filters in the return line and swing/travel motor drain lines.

Controls

Pilot controls. Hitachi's original shockless valve and quick warm-up system built in the pilot circuit. Hydraulic warm-up control system for engine and hydraulic oil.

Implement levers	2
Travel levers with pedals	2

Upper structure

REVOLVING FRAME

Welded sturdy box construction, using heavy-gauge steel plates for ruggedness. Reinforce frame for resistance to deformation.

SWING MECHANISM

Axial piston motor with planetary reduction gear is bathed in oil. Swing circle is single-row, shear-type ball bearing with induction-hardened internal gear. Internal gear and pinion gear are immersed in lubricant. Swing parking brake is spring-set/hydraulic-released disc type.

Swing speed 13.3 min⁻¹ (rpm)

OPERATOR'S CABIN

Independent spacious cabin, 1 005 mm wide by 1 675 mm high, conforming to ISO standards. Reinforced glass windows on 4 sides for visibility. Front windows (upper and lower) can be opened. Reclining seat with armrests; adjustable with or without control levers.

Undercarriage

TRACKS

Tractor-type undercarriage. Welded track frame using selected materials. Side frame welded to track frame.

Lubricated track rollers, idlers, and sprockets with floating seals.

Track shoes with triple grousers made of induction-hardened rolled alloy. Flat and triangular shoes are also available.

Heat-treated connecting pins with dirt seals. Hydraulic (grease) track adjusters with shock-absorbing recoil springs.

NUMBERS OF ROLLERS AND SHOES ON EACH SIDE

Upper rollers	2
Lower rollers	7: ZAXIS210 / 210N 8: ZAXIS210LC
Track shoes	46: ZAXIS210 / 210N 49: ZAXIS210LC
Track guard	1: ZAXIS210 / 210N 2: ZAXIS210LC

TRACTION DEVICE

Each track driven by 2-speed axial piston motor through planetary reduction gear for counterrotation of the tracks. Sprockets are replaceable. Parking brake is spring-set/hydraulic-released disc type. Travel shockless relief valve built in travel motor absorbs shocks when stopping travel.

Automatic transmission system: High-Low.

Travel speeds High: 0 to 5.5 km/h
Low: 0 to 3.6 km/h

Maximum traction force 184 kN (18 800 kgf)

Gradeability 35° (70%) continuous

Weights and ground pressure

ZAXIS210 / 210LC WITH MONOBLOCK BOOM:

Equipped with 5.68 m monoblock boom, 2.91 m arm and 0.80 m³ (PCSA heaped) bucket.

Shoe type	Shoe width	Operating weight	Ground pressure
Triple grouser	600 mm	19 600 kg	44 kPa (0.45 kgf/cm ²)
Triple grouser	600 mm	20 100 kg	42 kPa (0.43 kgf/cm ²)
Triple grouser	700 mm	19 800 kg	38 kPa (0.39 kgf/cm ²)
Triple grouser	700 mm	20 400 kg	36 kPa (0.37 kgf/cm ²)
Triple grouser	800 mm	20 100 kg	34 kPa (0.35 kgf/cm ²)
Triple grouser	800 mm	20 700 kg	32 kPa (0.33 kgf/cm ²)
Triple grouser	900 mm	20 400 kg	30 kPa (0.31 kgf/cm ²)
Triple grouser	900 mm	21 000 kg	29 kPa (0.30 kgf/cm ²)
Flat	600 mm	20 300 kg	45 kPa (0.46 kgf/cm ²)
Flat	600 mm	20 900 kg	43 kPa (0.44 kgf/cm ²)

ZAXIS210N (NARROW TYPE UNDERCARRIAGE) WITH MONOBLOCK BOOM:

Equipped with 5.68 m monoblock boom, 2.91 m arm and 0.80 m³ (PCSA heaped) bucket.

Shoe type	Shoe width	Operating weight	Ground pressure
Triple grouser	500 mm	20 500 kg	55 kPa (0.56 kgf/cm ²)
Triple grouser	600 mm	20 800 kg	47 kPa (0.48 kgf/cm ²)
Triple grouser	700 mm	21 000 kg	40 kPa (0.41 kgf/cm ²)
Flat	600 mm	21 500 kg	48 kPa (0.49 kgf/cm ²)

ZAXIS210 / 210LC WITH 2-PIECE BOOM:

Equipped with 2-piece boom, 2.03 m arm and 0.80 m³ (PCSA heaped) bucket.

Shoe type	Shoe width	Operating weight	Ground pressure
Triple grouser	600 mm	20 300 kg	45 kPa (0.46 kgf/cm ²)
Triple grouser	600 mm	20 800 kg	43 kPa (0.44 kgf/cm ²)
Triple grouser	700 mm	20 500 kg	39 kPa (0.40 kgf/cm ²)
Triple grouser	700 mm	21 000 kg	37 kPa (0.38 kgf/cm ²)
Triple grouser	800 mm	20 800 kg	35 kPa (0.36 kgf/cm ²)
Triple grouser	800 mm	21 300 kg	33 kPa (0.34 kgf/cm ²)
Triple grouser	900 mm	21 100 kg	31 kPa (0.32 kgf/cm ²)
Triple grouser	900 mm	21 700 kg	30 kPa (0.31 kgf/cm ²)
Flat	600 mm	21 000 kg	47 kPa (0.48 kgf/cm ²)
Flat	600 mm	21 500 kg	45 kPa (0.46 kgf/cm ²)

ZAXIS210N (NARROW TYPE UNDERCARRIAGE) WITH 2-PIECE BOOM:

Equipped with 2-piece boom, 2.91 m arm and 0.80 m³ (PCSA heaped) bucket.

Shoe type	Shoe width	Operating weight	Ground pressure
Triple grouser	500 mm	21 200 kg	57 kPa (0.58 kgf/cm ²)
Triple grouser	600 mm	21 500 kg	48 kPa (0.49 kgf/cm ²)
Triple grouser	700 mm	21 700 kg	42 kPa (0.43 kgf/cm ²)
Flat	600 mm	22 200 kg	50 kPa (0.51 kgf/cm ²)

Figures in are data on the ZAXIS210LC.

Weights of the basic machines [including 4 650 kg (ZAXIS210 / 210LC), 5 250 kg (ZAXIS210N), counterweight and triple grouser shoes, excluding front-end attachment, fuel, hydraulic oil, engine oil and coolant etc.] are:

ZAXIS210	15 200 kg with 600 mm shoes
ZAXIS210LC	15 700 kg with 600 mm shoes
ZAXIS210N	16 100 kg with 500 mm shoes

Service refill capacities

Fuel tank	
ZAXIS210(LC)	360.0 l
ZAXIS210N	290.0 l
Engine coolant	23.0 l
Engine oil	25.0 l
Swing mechanism	6.2 l
Travel final device (each side)	6.8 l
Hydraulic system	200.0 l
Hydraulic tank	135.0 l

Backhoe attachments

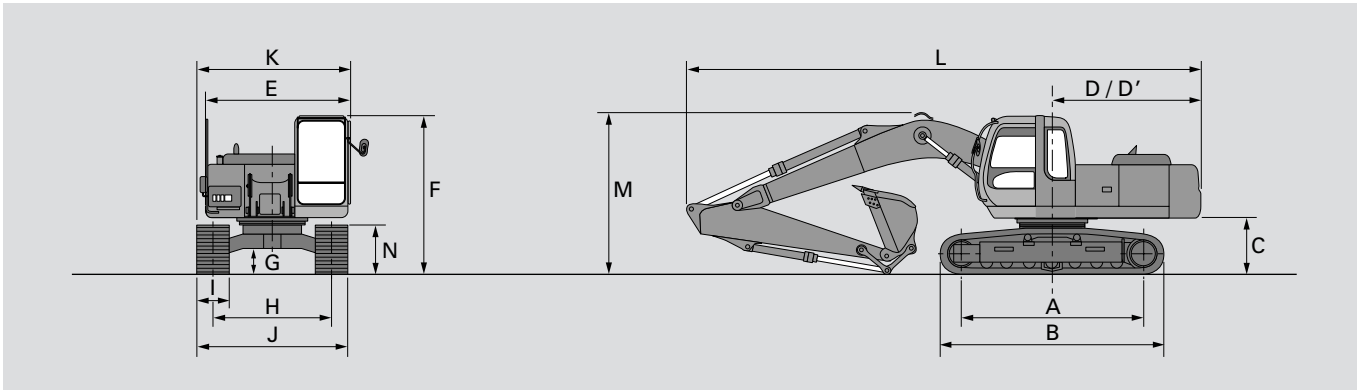
Boom and arms are of welded, box-section design. 5.68 m monoblock boom, 2-piece boom and 2.03 m, 2.42 m, 2.91 m and 3.51 m arms are available. Bucket is of welded steel structure.

BUCKETS

Capacity PCSA heaped	Width Without side cutters	Weight
0.56 m ³	700 mm	498 kg
0.68 m ³	800 mm	548 kg
0.90 m ³	1 000 mm	608 kg
1.02 m ³	1 100 mm	658 kg
1.13 m ³	1 200 mm	688 kg
1.25 m ³	1 300 mm	718 kg

SPECIFICATIONS

Dimensions: Monoblock boom



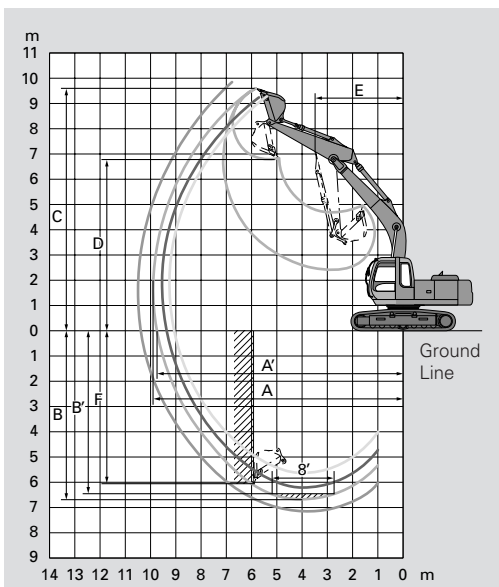
Unit: mm

	ZAXIS210	ZAXIS210LC	ZAXIS210N
A Sprocket centre to idler centre	3 370	3 660	3 370
B Undercarriage length	4 170	4 460	4 170
*C Counterweight clearance	1 030	1 030	1 030
D Rear-end swing radius	2 750	2 750	2 750
D' Rear-end length	2 750	2 750	2 750
E Overall width of upper structure	2 710	2 710	2 500
F Overall height of cabin	2 950	2 950	2 950
*G Min. ground clearance	450	450	450
H Track gauge	2 200	2 390	1 980
I Track shoe width	G 600	G 600	G 500
J Undercarriage width	2 800	2 990	2 480
K Overall width	2 860	2 990	2 500
L Overall length			
With 2.03 m arm	9 620	9 620	9 620
With 2.42 m arm	9 610	9 610	9 610
With 2.91 m arm	9 500	9 500	9 500
With 3.51 m arm	9 560	9 560	9 560
M Overall height of boom			
With 2.03 m arm	3 120	3 120	3 120
With 2.42 m arm	3 150	3 150	3 150
With 2.91 m arm	2 970	2 970	2 970
With 3.51 m arm	3 110	3 110	3 110
N Track height with triple grouser shoes	910	910	910

* Excluding track shoe lug. G: Triple grouser shoe

Working ranges

Unit: mm

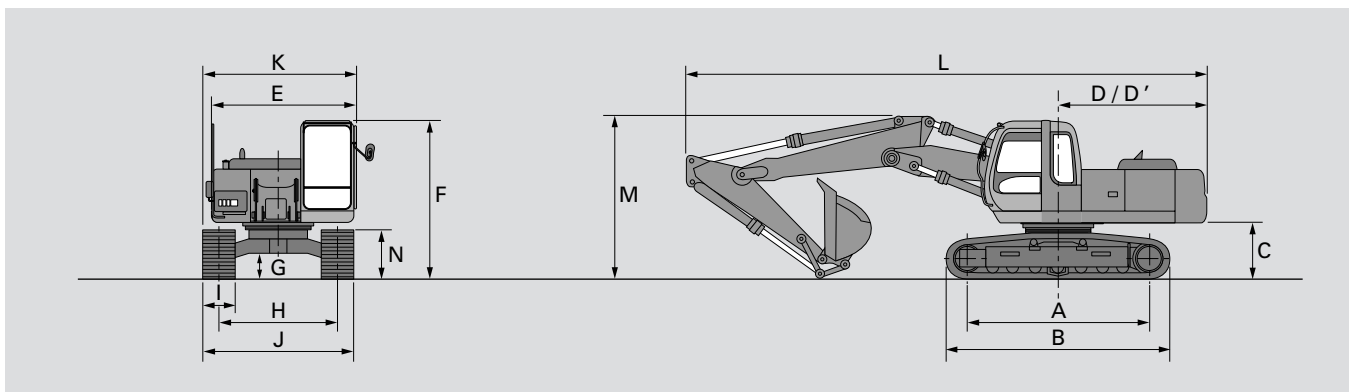


	ZAXIS210 / 210LC / 210N			
	5.68 m Monoboom			
Arm length	2.03 m	2.42 m	2.91 m	3.51 m
A Max. digging reach	9 215	9 415	9 910	10 445
A' Max. digging reach (on ground)	9 045	9 250	9 750	10 295
B Max. digging depth	5 790	6 175	6 670	7 265
B' Max. digging depth (8' level)	5 570	5 945	6 490	7 115
C Max. cutting height	9 475	9 245	9 600	9 855
D Max. dumping height	6 610	6 460	6 780	7 035
E Min. swing radius	3 605	3 525	3 540	3 555
F Max. vertical wall	5 200	5 355	6 050	6 685
Bucket digging force ISO	151 kN (15 400 kgf)	151 kN (15 400 kgf)	151 kN (15 400 kgf)	151 kN (15 400 kgf)
Bucket digging force SAE : PCSA	129 kN (13 200 kgf)	129 kN (13 200 kgf)	129 kN (13 200 kgf)	129 kN (13 200 kgf)
Arm crowd force ISO	144 kN (14 700 kgf)	133 kN (13 500 kgf)	109 kN (11 100 kgf)	95 kN (9 700 kgf)
Arm crowd force SAE : PCSA	138 kN (14 050 kgf)	127 kN (13 000 kgf)	102 kN (10 400 kgf)	92 kN (9 400 kgf)

Excluding track shoe lug. ** At power boost.

SPECIFICATIONS

Dimensions: 2-Piece boom



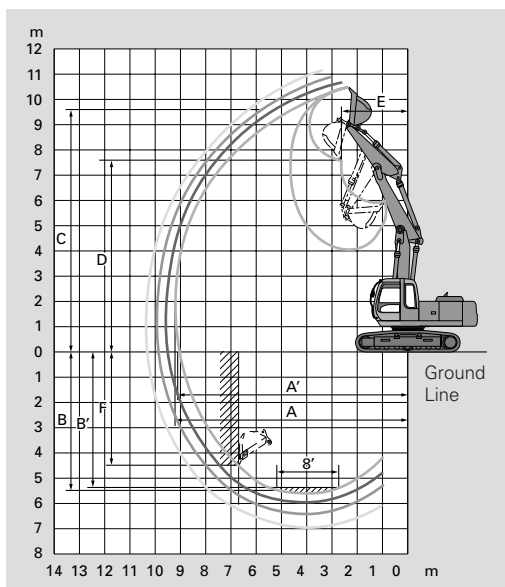
Unit: mm

	ZAXIS210	ZAXIS210LC	ZAXIS210N
A Sprocket centre to idler centre	3 370	3 660	3 370
B Undercarriage length	4 170	4 460	4 170
*C Counterweight clearance	1 030	1 030	1 030
D Rear-end swing radius	2 750	2 750	2 750
D' Rear-end length	2 750	2 750	2 750
E Overall width of upper structure	2 710	2 710	2 500
F Overall height of cabin	2 950	2 950	2 950
*G Min. ground clearance	450	450	450
H Track gauge	2 200	2 390	1 980
I Track shoe width	G 600	G 600	G 500
J Undercarriage width	2 800	2 990	2 480
K Overall width	2 860	2 990	2 500
L Overall length			
With 2.03 m arm	9 570	9 570	9 570
With 2.42 m arm	9 540	9 540	9 540
With 2.91 m arm	9 500	9 500	9 500
With 3.51 m arm	9 490	9 490	9 490
M Overall height of boom			
With 2.03 m arm	3 010	3 010	3 010
With 2.42 m arm	3 060	3 060	3 060
With 2.91 m arm	2 930	2 930	2 930
With 3.51 m arm	3 110	3 110	3 110
N Track height with triple grouser shoes	910	910	910

* Excluding track shoe lug. G: Triple grouser shoe

Working ranges

Unit: mm



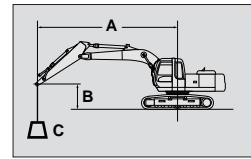
	ZAXIS210 / 210LC / 210N			
	2-Piece boom			
Arm length	2.03 m	2.42 m	2.91 m	3.51 m
A Max. digging reach	9 185	9 405	9 900	10 445
A' Max. digging reach (on ground)	9 015	9 240	9 745	10 300
B Max. digging depth	5 480	5 785	6 290	6 875
B' Max. digging depth (B' level)	5 365	5 675	6 185	6 775
C Max. cutting height	10 475	10 515	10 955	11 375
D Max. dumping height	7 570	7 600	8 040	8 465
E Min. swing radius	2 640	2 635	2 280	2 325
F Max. vertical wall	4 460	4 585	5 155	5 975
Bucket digging force ISO	151 kN (15 400 kgf)	151 kN (15 400 kgf)	151 kN (15 400 kgf)	151 kN (15 400 kgf)
Bucket digging force SAE : PCSA	129 kN (13 200 kgf)	129 kN (13 200 kgf)	129 kN (13 200 kgf)	129 kN (13 200 kgf)
Arm crowd force ISO	144 kN (14 700 kgf)	133 kN (13 500 kgf)	109 kN (11 100 kgf)	95 kN (9 700 kgf)
Arm crowd force SAE : PCSA	138 kN (14 050 kgf)	127 kN (13 000 kgf)	102 kN (10 400 kgf)	92 kN (9 400 kgf)

Excluding track shoe lug. ** At power boost.

LIFTING CAPACITIES

Metric measure

- Notes:
1. Ratings are based on ISO 10576.
 2. Lifting capacity of the ZAXIS series does not exceed 75% of tipping load with the machine on firm, level ground or 87% full hydraulic capacity.
 3. The load point is the center-line of the bucket pivot mounting pin on the arm.
 4. * Indicates load limited by hydraulic capacity.
 5. 0 m = Ground.



A: Load radius
B: Load point height
C: Lifting capacity

ZAXIS210 MONOBLOCK BOOM



Rating over-side or 360 degrees



Rating over-front

Unit: kg

Conditions	Load point height	Load radius												At max. reach			
		3 m		4 m		5 m		6 m		7 m		8 m		meter			
		⏏	⦿	⏏	⦿	⏏	⦿	⏏	⦿	⏏	⦿	⏏	⦿				
Arm 2.03 m Shoe 600 mm	6 m														*5 390	3 850	6.44
	4 m			*7 990	*7 560	*6 550	5 460								4 550	3 020	7.41
	2 m					7 960	5 010	6 060	3 920						4 170	2 740	7.75
	0 m					7 710	4 790	5 880	3 760						4 260	2 790	7.55
	-1 m			*11 140	6 580	7 680	4 770	5 850	3 730						4 520	2 940	7.24
	-3 m	*11 860	10 770	*9 710	6 730	7 810	4 880								5 870	3 790	6.09
Arm 2.42 m Shoe 600 mm	6 m							*4 850	4 400						*4 940	3 670	6.68
	4 m			*7 320	*7 320	*6 140	5 520	*5 490	4 210	5 020	3 330				4 380	2 900	7.62
	2 m					*7 860	5 030	6 070	3 920	4 830	3 160				4 000	2 630	7.95
	0 m			11 060	6 500	7 680	4 760	5 850	3 730	4 700	3 040				4 070	2 650	7.75
	-1 m			11 050	6 490	7 630	4 720	5 810	3 690	4 670	3 020				4 290	2 780	7.45
	-3 m	*12 660	10 580	*10 120	6 620	7 710	4 790	5 880	3 750						5 450	3 500	6.34
Arm 2.91 m Shoe 600 mm	6 m							*4 360	*4 360	*4 460	3 450				*4 060	3 230	7.27
	4 m			*6 460	*6 460	*5 580	*5 580	*5 080	4 250	*4 780	3 350	4 070	2 690		3 960	2 620	8.13
	2 m			*9 620	6 950	*7 400	5 090	6 100	3 940	4 840	3 160	3 960	2 590		3 650	2 390	8.44
	0 m	*4 640	*4 640	11 060	6 490	7 680	4 750	5 840	3 710	4 670	3 010	3 870	2 510		3 690	2 400	8.26
	-1 m	*7 330	*7 330	10 990	6 440	7 600	4 680	5 780	3 650	4 630	2 970				3 860	2 500	7.98
	-3 m	*13 540	10 400	*10 550	6 510	7 620	4 700	5 790	3 660						4 720	3 040	6.95
Arm 3.51 m Shoe 600 mm	6 m											*3 900	3 520		*3 240	2 840	7.89
	4 m					*4 880	*4 880	*4 540	4 320	*4 340	3 380	4 100	2 720		*3 220	2 350	8.69
	2 m	*6 870	*6 870	*8 640	7 130	*6 780	5 170	*5 750	3 980	4 860	3 170	3 960	2 590		3 310	2 150	8.98
	0 m	*5 710	*5 710	*10 800	6 500	7 690	4 750	5 830	3 700	4 650	2 990	3 830	2 470		3 330	2 150	8.81
	-1 m	*7 390	*7 390	10 940	6 380	7 560	4 640	5 740	3 610	4 590	2 930	3 790	2 430		3 460	2 220	8.55
	-3 m	*12 640	10 170	*10 880	6 370	7 510	4 600	5 690	3 570	4 570	2 910				4 090	2 620	7.60
-5 m	*11 390	10 580	*8 900	6 620	*7 100	4 780								*5 730	3 880	5.85	

ZAXIS210LC MONOBLOCK BOOM

Unit: kg

Conditions	Load point height	Load radius												At max. reach			
		3 m		4 m		5 m		6 m		7 m		8 m		meter			
		⏏	⦿	⏏	⦿	⏏	⦿	⏏	⦿	⏏	⦿	⏏	⦿				
Arm 2.03 m Shoe 600 mm	6 m					*5 340	*5 340	*5 270	4 820						*5 390	4 260	6.44
	4 m			*7 990	*7 990	*6 550	6 070	*5 810	4 640	*5 430	3 680				5 170	3 350	7.41
	2 m					*8 200	5 610	*6 780	4 370	5 520	3 530				4 740	3 050	7.75
	0 m					8 940	5 390	6 750	4 210	5 400	3 430				4 860	3 110	7.55
	-1 m			*11 150	7 460	8 920	5 370	6 730	4 180	5 400	3 430				5 160	3 290	7.24
	-3 m	*11 860	*11 860	*9 710	7 620	*7 940	5 480	*6 310	4 310						*6 120	4 230	6.09
Arm 2.42 m Shoe 600 mm	6 m							*4 850	*4 850						*4 940	4 070	6.68
	4 m			*7 320	*7 320	*6 140	6 140	*5 490	4 670	*5 140	3 690				4 970	3 220	7.62
	2 m					*7 860	5 640	*6 530	4 380	5 510	3 530				4 550	2 930	7.95
	0 m			*11 280	7 380	*8 870	5 360	6 730	4 180	5 370	3 400				4 640	2 960	7.75
	-1 m			*11 280	7 370	8 870	5 320	6 680	4 140	5 350	3 380				4 900	3 120	7.45
	-3 m	*12 660	12 200	10 120	7 510	*8 230	5 390	*6 720	4 200						*6 200	3 920	6.34

LIFTING CAPACITIES

Metric measure

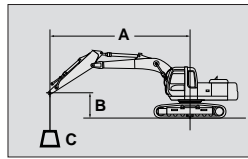
Notes: 1. Ratings are based on ISO 10576.

2. Lifting capacity of the ZAXIS series does not exceed 75% of tipping load with the machine on firm, level ground or 87% full hydraulic capacity.

3. The load point is the center-line of the bucket pivot mounting pin on the arm.

4. * Indicates load limited by hydraulic capacity.

5. 0 m = Ground.



A: Load radius
B: Load point height
C: Lifting capacity

ZAXIS210LC MONOBLOCK BOOM



Rating over-side or 360 degrees



Rating over-front

Unit: kg

Conditions	Load point height	Load radius												At max. reach		
		3 m		4 m		5 m		6 m		7 m		8 m		meter		
		↕	↻	↕	↻	↕	↻	↕	↻	↕	↻	↕	↻			
Arm 2.91 m Shoe 600 mm	6 m							*4 360	*4 360	*4 460	3 820			*4 060	3 580	7.27
	4 m			*6 460	*6 460	*5 580	*5 580	*5 080	4 720	*4 780	3 720	4 620	3 000	*4 020	2 910	8.13
	2 m			*9 620	7 850	*7 400	5 700	*6 200	4 400	*5 470	3 530	4 510	2 900	4 150	2 670	8.44
	0 m	*4 640	*4 640	11 220	7 380	*8 660	5 350	6 720	4 160	5 350	3 370	4 410	2 810	4 210	2 680	8.26
	-1 m	*7 330	*7 330	11 330	7 320	8 830	5 280	6 650	4 100	5 300	3 330			4 410	2 800	7.98
	-3 m	*13 540	12 010	*10 550	7 390	*8 490	5 300	6 660	4 120					5 400	2 400	6.95
	-5 m			*7 760	7 740									*5 990	5 640	4.97
Arm 3.51 m Shoe 600 mm	6 m									*3 900	3 890			*3 240	3 150	7.89
	4 m					*4 880	*4 880	*4 540	*4 540	*4 340	3 750	*4 230	3 020	*3 220	2 620	8.69
	2 m	*6 870	*6 870	*8 640	8 040	*6 780	5 790	*5 750	4 440	*5 110	3 540	4 510	2 890	*3 400	2 410	8.98
	0 m	*5 710	*5 710	*10 800	7 390	*8 300	5 350	6 710	4 150	5 330	3 350	4 380	2 770	3 800	2 410	8.81
	-1 m	*7 390	*7 390	*11 190	7 260	*8 700	5 240	6 620	4 070	5 260	3 290	4 340	2 740	3 950	2 500	8.55
	-3 m	*12 640	11 170	*10 880	7 260	*8 670	5 200	6 570	4 020	5 240	3 270			4 680	2 940	7.60
	-5 m	*11 390	*11 390	*8 900	7 510	*7 100	5 390							*5 730	4 350	5.85

ZAXIS210N MONOBLOCK BOOM

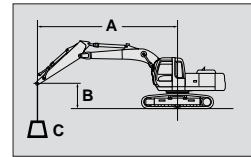
Unit: kg

Conditions	Load point height	Load radius												At max. reach		
		3 m		4 m		5 m		6 m		7 m		8 m		meter		
		↕	↻	↕	↻	↕	↻	↕	↻	↕	↻	↕	↻			
Arm 2.03 m Shoe 500 mm	6 m					*5 340	*5 340	*5 270	4 400					*5 390	3 900	6.45
	4 m			*7 990	7 520	*6 550	5 490	*5 810	4 230	*5 430	3 370			5 505	3 070	7.41
	2 m					*8 200	5 050	6 720	3 970	5 370	3 230			4 630	2 800	7.75
	0 m					8 560	4 830	6 540	3 810	5 260	3 130			4 750	2 850	7.56
	-1 m			*11 150	6 570	8 540	4 810	6 510	3 790	5 260	3 130			5 030	3 000	7.24
	-3 m	*11 860	10 540	*9 710	6 730	*7 940	4 920	*6 310	3 910					*6 120	3 840	6.09
	-5 m							*4 850	4 450					*4 940	3 720	6.69
Arm 2.42 m Shoe 500 mm	6 m									*5 140	3 380			4 850	2 960	7.62
	4 m			*4 870	*4 870	*6 140	5 540	*5 490	4 250	*5 140	3 380			4 450	2 680	7.95
	2 m					*7 860	5 070	*6 530	3 980	5 370	3 220			4 450	2 680	7.95
	0 m			*8 640	6 500	8 530	4 800	6 510	3 780	5 230	3 100			4 540	2 710	7.76
	-1 m			*10 930	6 490	8 490	4 760	6 470	3 750	5 210	3 070			4 780	2 840	7.46
	-3 m	*12 660	10 360	*10 120	6 610	*8 230	4 830	6 540	3 810					6 050	3 560	6.35
	-5 m							*4 360	*4 360	*4 460	3 500			*4 060	3 280	7.27
Arm 2.91 m Shoe 500 mm	6 m									*4 780	3 400	4 520	2 750	*4 020	2 670	8.14
	4 m			*6 460	*6 460	*5 580	*5 580	*5 080	4 300	*4 780	3 400	4 520	2 750	*4 020	2 670	8.14
	2 m			*9 620	6 930	*7 400	5 130	*6 200	4 000	5 370	3 220	4 410	2 650	4 070	2 440	8.45
	0 m	*4 640	*4 640	*11 220	6 490	8 540	4 800	6 500	3 770	5 210	3 070	4 310	2 560	4 120	2 450	8.26
	-1 m	*7 330	*7 330	*11 330	6 440	8 450	4 730	6 430	3 710	5 160	3 030			4 310	2 560	7.98
	-3 m	*13 540	10 190	*10 550	6 510	8 480	4 750	6 440	3 720					5 250	3 100	6.96
	-5 m			*7 760	6 830									*5 990	5 070	4.97
Arm 3.51 m Shoe 500 mm	6 m									*3 900	3 570			*3 240	2 890	7.89
	4 m					*4 880	*4 880	*4 540	4 360	*4 340	3 440	*4 230	2 770	*3 220	2 400	8.69
	2 m	*6 870	*6 870	*8 640	7 110	*6 780	5 200	*5 750	4 030	*5 110	3 230	4 410	2 640	3 400	2 200	8.98
	0 m	*5 710	*5 710	*10 800	6 490	*8 300	4 790	6 490	3 750	5 190	3 040	4 280	2 530	3 730	2 200	8.81
	-1 m	*7 390	*7 390	*11 190	6 380	8 420	4 690	6 400	3 670	5 120	2 990	4 240	2 490	3 870	2 280	8.55
	-3 m	*12 640	9 960	*10 880	6 370	8 370	4 640	6 350	3 630	5 100	2 970			4 570	2 680	7.60
	-5 m	*11 390	10 350	*8 900	6 610	*7 100	4 820							*5 730	3 930	5.85

LIFTING CAPACITIES

Metric measure

- Notes:
1. Ratings are based on ISO 10576.
 2. Lifting capacity of the ZAXIS series does not exceed 75% of tipping load with the machine on firm, level ground or 87% full hydraulic capacity.
 3. The load point is the center-line of the bucket pivot mounting pin on the arm.
 4. * Indicates load limited by hydraulic capacity.
 5. 0 m = Ground.



- A: Load radius
B: Load point height
C: Lifting capacity

ZAXIS210 2-PIECE BOOM



Rating over-side or 360 degrees



Rating over-front

Unit: kg

Conditions	Load point height	Load radius												At max. reach			
		3 m		4 m		5 m		6 m		7 m		8 m		meter			
Arm 2.03 m Shoe 600 mm	6 m	*7 890	*7 890	*7 580	*7 580	*6 530	6 000	*5 920	4 370						*5 280	3 820	6.41
	4 m	*10 440	*10 440	*9 730	7 970	*7 520	5 870	*6 200	4 410	5 030	3 300				4 550	2 960	7.38
	2 m	*13 210	11 870	*10 840	7 700	*8 180	5 720	*6 320	4 200	4 920	3 200				4 150	2 670	7.73
	0 m	*15 480	11 240	*11 300	7 240	8 170	5 240	6 110	3 900	4 750	3 040				4 250	2 720	7.53
	-1 m	*15 630	10 950	*11 390	7 010	8 050	5 010	5 970	3 780	4 700	3 000				4 510	2 880	7.21
	-3 m	*14 530	10 820	*10 360	6 760	*7 450	4 850								*4 750	3 900	5.87
Arm 2.42 m Shoe 600 mm	6 m			*7 120	*7 120	*6 180	6 020	*5 530	4 490						*4 800	3 630	6.68
	4 m	*11 020	*11 020	*9 160	7 990	*7 110	5 860	*5 910	4 480	5 100	3 360				*4 360	2 840	7.61
	2 m	*13 320	*11 810	*10 920	7 730	8 150	*5 750	6 300	4 250	4 950	3 230				3 970	2 560	7.94
	0 m	*15 310	11 380	*11 200	7 320	8 150	5 280	6 120	3 910	4 740	3 030				4 040	2 580	7.75
	-1 m	*15 480	10 990	*11 280	7 040	8 050	5 010	5 960	3 770	4 670	2 960				4 260	2 710	7.45
	-3 m	*15 070	10 690	*10 830	6 670	7 770	4 770	*5 460	3 680						*4 320	3 440	6.33
Arm 2.91 m Shoe 600 mm	8 m			*6 240	*6 240	*5 690	*5 690								*4 640	*4 640	5.58
	6 m			*5 930	*5 930	*5 770	*5 770	*5 160	4 630	*4 540	3 440				*4 070	3 180	7.26
	4 m	*11 110	*11 110	*8 250	8 040	*6 610	5 860	*5 560	4 550	*4 860	3 470	4 060	2 650		*3 880	2 560	8.13
	2 m	*13 070	11 780	*10 730	7 760	*8 140	5 650	6 290	*4 340	5 000	3 310	3 980	2 570		3 610	2 320	8.44
	0 m	*14 880	11 640	*11 130	7 450	*8 080	5 360	6 150	4 010	4 800	3 080	3 850	2 450		3 660	2 330	8.26
	-1 m	*15 340	11 120	*11 170	7 110	*8 070	5 130	6 030	3 830	4 690	2 980				3 830	2 430	7.98
	-3 m	*15 650	10 740	*11 320	6 690	7 760	4 750	5 810	3 630						*4 210	2 970	6.95
Arm 3.51 m Shoe 600 mm	8 m					*4 980	*4 980	*4 360	*4 360						*3 620	*3 620	6.38
	6 m					*5 000	*5 000	*4 780	4 660	*4 330	3 590				*3 250	2 790	7.89
	4 m	*6 210	*6 210	*6 580	*6 580	*6 050	5 890	*5 180	4 550	*4 540	3 590	*4 090	2 750		*3 190	2 290	8.70
	2 m	*13 010	*11 780	*10 110	7 740	*7 740	5 690	*6 070	4 370	*4 980	3 420	4 050	2 640		3 270	2 080	8.99
	0 m	*14 320	11 690	11 040	7 650	8 000	5 480	6 120	4 130	4 870	3 150	3 880	2 470		3 300	2 080	8.82
	-1 m	*15 050	11 330	*11 040	7 230	8 030	5 210	6 060	3 910	4 730	3 010	3 800	2 400		3 420	2 150	8.55
	-3 m	*15 530	10 690	*11 330	6 740	7 780	4 760	5 790	3 600	4 570	2 860				4 060	2 550	7.61
	-5 m	*12 020	10 540	*8 400	6 580	*5 650	4 720								*5 320	4 560	5.13

ZAXIS210LC 2-PIECE BOOM

Unit: kg

Conditions	Load point height	Load radius												At max. reach			
		3 m		4 m		5 m		6 m		7 m		8 m		meter			
Arm 2.03 m Shoe 600 mm	6 m	*7 890	*7 890	*7 580	*7 580	*6 530	*6 530	*5 920	4 850						*5 280	4 250	6.41
	4 m	*10 440	*10 440	*9 730	8 720	*7 520	6 390	*6 200	4 880	*5 490	3 670				*4 720	3 310	7.38
	2 m	*13 210	13 100	*10 840	8 520	*8 800	6 360	*7 030	4 670	5 610	3 570				*4 660	3 000	7.73
	0 m	*15 480	12 920	*11 300	8 170	*8 880	5 860	7 010	4 370	5 440	3 410				4 860	3 050	7.53
	-1 m	*15 630	12 610	*11 390	7 930	*8 980	5 630	6 870	4 240	5 390	3 370				*4 960	3 240	7.21
	-3 m	*14 530	12 480	*10 360	7 670	*7 450	5 460								*4 750	4 380	5.87
Arm 2.42 m Shoe 600 mm	6 m			*7 120	*7 120	*6 180	*6 180	*5 530	4 960						*4 800	4 040	6.68
	4 m	*11 020	*11 020	*9 160	8 750	*7 110	*6 390	*5 910	4 940	*5 180	3 730				*4 360	3 170	7.61
	2 m	*13 320	13 020	*10 920	8 500	*8 630	6 170	*6 920	4 730	5 610	3 600				*4 340	2 870	7.94
	0 m	*15 310	13 070	*11 210	8 250	*8 810	5 900	6 980	4 380	5 430	3 400				4 620	2 900	7.75
	-1 m	*15 480	12 660	*11 280	7 960	*8 860	5 630	6 860	4 230	5 360	3 330				4 890	3 050	7.45
	-3 m	*15 070	12 340	*10 830	7 580	*8 030	5 380	*5 460	4 140						*4 320	3 870	6.33

LIFTING CAPACITIES

Metric measure

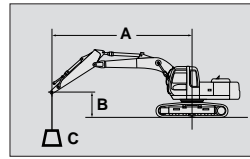
Notes: 1. Ratings are based on ISO 10576.

2. Lifting capacity of the ZAXIS series does not exceed 75% of tipping load with the machine on firm, level ground or 87% full hydraulic capacity.

3. The load point is the center-line of the bucket pivot mounting pin on the arm.

4. * Indicates load limited by hydraulic capacity.

5. 0 m = Ground.



A: Load radius
B: Load point height
C: Lifting capacity

ZAXIS210LC 2-PIECE BOOM



Rating over-side or 360 degrees



Rating over-front

Unit: kg

Conditions	Load point height	Load radius												At max. reach			
		3 m		4 m		5 m		6 m		7 m		8 m		meter			
		☺	☹	☺	☹	☺	☹	☺	☹	☺	☹	☺	☹				
Arm 2.91 m Shoe 600 mm	8 m			*6 240	*6 240	*5 690	*5 690								*4 640	*4 640	5.58
	6 m			*5 930	*5 930	*5 770	*5 770	*5 160	5 050	*4 540	3 820				*4 070	3 540	7.26
	4 m	*11 110	*11 110	*8 250	*8 250	*6 610	6 390	*5 560	4 960	*4 860	3 840	*4 140	2 960	*3 880	2 860	8.13	
	2 m	*13 070	13 010	*10 730	*8 480	*8 340	6 200	*6 530	4 760	*5 380	3 690	4 540	2 880	*3 860	2 600	8.44	
	0 m	*14 880	13 080	*11 130	8 390	*8 750	5 990	*6 930	4 480	5 490	3 450	4 400	2 760	*4 140	2 620	8.26	
	-1 m	*15 340	12 800	*11 170	8 030	*8 770	5 750	6 920	4 290	5 380	3 350				4 390	2 740	7.98
	-3 m	*15 650	12 400	*11 320	7 600	*8 650	5 370	*6 570	4 090						*4 210	3 350	6.95
Arm 3.51 m Shoe 600 mm	8 m					*4 980	*4 980	*4 360	*4 360					*3 620	*3 620	6.38	
	6 m					*5 000	*5 000	*4 780	*4 780	*4 330	3 960			*3 250	3 110	7.89	
	4 m	*6 210	*6 210	*6 580	*6 580	*6 050	*6 050	*5 180	4 950	*4 540	3 950	*4 090	3 060	*3 190	2 570	8.70	
	2 m	*13 010	*13 010	*10 110	*8 470	*7 740	6 200	*6 070	4 780	*5 050	3 800	*4 390	2 950	*3 350	2 350	8.99	
	0 m	*14 320	12 920	*11 050	*8 270	*8 670	6 110	6 850	4 560	5 470	3 520	4 440	2 780	*3 620	2 350	8.82	
	-1 m	*15 050	13 030	*11 050	8 160	*8 670	5 840	6 870	4 380	5 430	3 380	4 360	2 710	*3 850	2 440	8.55	
	-3 m	*15 530	12 350	*11 330	7 650	*8 840	5 380	6 690	4 070	5 250	3 230				*4 110	2 880	7.61
-5 m	*12 020	*12 020	*8 400	7 480	*5 650	5 340								*5 320	5 150	5.13	

ZAXIS210N 2-PIECE BOOM

Unit: kg

Conditions	Load point height	Load radius												At max. reach			
		3 m		4 m		5 m		6 m		7 m		8 m		meter			
		☺	☹	☺	☹	☺	☹	☺	☹	☺	☹	☺	☹				
Arm 2.03 m Shoe 500 mm	8 m			*7 750	*7 750										*7 300	*7 050	4.41
	6 m	*7 890	*7 890	*7 580	*7 580	*6 530	6 000	*5 920	4 410						*5 280	3 860	6.41
	4 m	*10 440	*10 440	*9 730	7 910	*7 520	5 880	*6 200	4 440	*5 490	3 350				*4 720	3 010	7.38
	2 m	*13 210	11 640	*10 840	*7 650	8 780	5 720	6 850	4 230	5 450	3 240				*4 620	2 720	7.73
	0 m	*15 480	10 960	*11 300	7 200	*8 780	5 250	6 760	3 940	5 280	3 090				*4 730	2 770	7.53
	-1 m	*15 630	10 680	*11 390	6 980	8 900	5 040	6 630	3 830	5 240	3 050				*4 960	2 940	7.21
	-3 m	*14 530	10 560	*10 360	6 730	*7 450	4 880								*4 750	3 940	5.87
Arm 2.42 m Shoe 500 mm	8 m			*7 090	*7 090										*6 330	*6 320	4.78
	6 m			*7 120	*7 120	*6 180	6 010	*5 530	4 520						*4 800	3 670	6.68
	4 m	*11 020	*11 020	*9 160	7 930	*7 110	5 860	*5 910	4 510	*5 180	3 400				*4 360	2 890	7.61
	2 m	*13 320	*11 570	*10 920	7 670	*8 630	*5 750	6 820	4 290	5 480	3 270				*4 340	2 610	7.94
	0 m	*15 310	11 090	11 210	7 270	8 710	5 290	6 760	3 950	5 280	3 080				*4 510	2 630	7.75
	-1 m	*15 480	10 720	*11 280	7 000	*8 800	5 030	6 620	3 810	5 200	3 020				*4 750	2 760	7.45
	-3 m	*15 070	10 430	*10 830	6 650	*8 030	4 800	*5 460	3 730						*4 320	3 490	6.33
Arm 2.91 m Shoe 500 mm	8 m			*6 240	*6 240	*5 690	*5 690								*4 640	*4 640	5.58
	6 m			*5 930	*5 930	*5 770	*5 770	*5 160	4 650	*4 540	3 490				*4 070	3 230	7.26
	4 m	*11 110	*11 110	*8 250	7 970	*6 610	5 860	*5 560	4 570	*4 860	3 510	*4 140	2 690	*3 880	2 600	8.13	
	2 m	*13 070	11 530	*10 730	*7 690	*8 340	5 650	*6 530	4 370	*5 380	3 360	4 430	2 620	*3 860	2 370	8.44	
	0 m	*14 880	11 340	*11 130	7 400	8 640	5 380	6 730	4 040	5 330	3 130	4 290	2 500	4 090	2 380	8.26	
	-1 m	*15 340	10 840	11 170	7 070	8 680	5 150	6 690	3 870	5 220	3 030				4 280	2 480	7.98
	-3 m	*15 650	10 480	*11 320	6 660	8 620	4 780	6 470	3 670						*4 210	3 020	6.95
Arm 3.51 m Shoe 500 mm	8 m					*4 980	*4 980	*4 360	*4 360						*3 620	*3 620	6.38
	6 m					*5 000	*5 000	*4 780	4 680	*4 330	3 630				*3 250	2 840	7.89
	4 m	*6 210	*6 210	*6 580	*6 580	*6 050	5 880	*5 180	4 570	*4 540	3 630	*4 090	2 790	*3 190	2 330	8.70	
	2 m	*13 010	11 520	*10 110	7 680	*7 740	5 690	*6 070	4 400	*5 050	3 460	*4 390	2 680	*3 350	2 130	8.99	
	0 m	*14 320	*11 430	*11 050	7 590	*8 570	5 490	6 680	4 170	5 340	3 190	4 330	2 520	*3 620	2 130	8.82	
	-1 m	*15 050	11 030	*11 050	7 180	8 570	5 220	6 650	3 950	5 270	3 060	4 250	2 450	*3 840	2 200	8.55	
	-3 m	*15 530	10 430	*11 330	6 710	8 640	4 790	6 450	3 650	5 100	2 910				*4 110	2 600	7.61
-5 m	*12 020	10 290	*8 400	6 550	*5 650	4 750								*5 320	4 590	5.13	

Standard Equipment

Standard equipment may vary by country, so please consult your Hitachi dealer for details.

ENGINE

- H/P mode control
- E mode control
- 50 A alternator
- Dry-type air filter with evacuator valve (air filter restriction indicator)
- Cartridge-type engine oil filter
- Cartridge-type fuel filter
- Air cleaner double filters
- Radiator and oil cooler with dust protective net
- Radiator reserve tank
- Fan guard
- Isolation-mounted engine
- Auto-idle system
- Auto acceleration system

HYDRAULIC SYSTEM

- Work mode selector
- Engine speed sensing system
- E-P control system
- Power boost
- Auto power lift
- Quick warm-up system for pilot circuit
- Shockless valve in pilot circuit
- Boom-arm anti-drift valve
- Control valve with main relief valve
- Extra port for control valve
- Suction filter
- Full-flow filter
- Pilot filter

CABIN

- CRES (Center pillar Reinforced Structure) cabin
- OPG top guard fitted Level I (ISO) compliant cabin
- All-weather sound-suppressed steel cabin
- Equipped with reinforced, tinted (bronze color) glass windows
- 4 fluid-filled elastic mounts
- Upper, lower and left-side windows can be opened
- Intermittent windshield retractable wipers
- Front window washer
- Adjustable reclining seat with adjustable armrests
- Footrest
- Electric double horn
- AM - FM radio with digital clock
- Auto-idle / acceleration selector
- Seat belt
- Drink holder
- Cigar lighter
- Ashtray
- Storage box
- Glove compartment
- Fire extinguisher bracket
- Floor mat
- Pilot control shut-off lever
- Engine stop knob
- Auto control air conditioner
- Transparency roof with roll curtain
- Suspension seat

MONITOR SYSTEM

- Meters: Hour-meter and trip-meter, engine coolant temperature gauge and fuel gauge
- Warning lamps: Alternator charge, engine oil pressure, engine overheat, air filter restriction and minimum fuel level
- Pilot lamps: Engine preheat, work light, auto-idle, auto-acceleration, digging mode and attachment mode
- Alarm buzzers: Engine oil pressure and engine overheat

LIGHTS

- 2 working lights

UPPER STRUCTURE

- Undercover
- 4 650 kg counterweight (ZAXIS210 / 210LC)
- 5 250 kg counterweight (ZAXIS210N)
- Fuel level float
- Hydraulic oil level gauge
- Toolbox
- Utility space (without ZAXIS210N)
- Rearview mirror (right & left side)
- Swing parking brake

UNDERCARRIAGE

- Travel parking brake
- Travel motor covers
- Track guards and hydraulic track adjuster
- Bolt-on sprocket
- Upper rollers and lower rollers
- Reinforced track links with pin seals

FRONT ATTACHMENTS

- HN bushing
- WC thermal spraying
- Reinforced resin thrust plate
- Flanged pin
- Monolithically cast bucket link A
- Centralized lubrication system
- Dirt seal on all bucket pins

MISCELLANEOUS

- Standard tool kit
- Lockable machine covers
- Lockable fuel filling cap
- Skid-resistant tapes, plates and handrails.
- Travel direction mark on track frame
- Onboard ICX

Optional Equipment

Optional equipment may vary by country, so please consult your Hitachi dealer for details.

CABIN

- Front glass lower guard
- Front glass upper guard
- Overhead guard
- OPG top and front guard fitted Level II (ISO) complied cabin
- Anti-vandal cover
- Suspension seat with heater
- Air suspension seat with heater
- Rain guard
- Sun visor
- Additional fuse box
- Immobilizer key
- 12 V power supply

LIGHTS

- Additional cabin roof front lights
- Additional cabin roof rear lights
- Additional boom light with cover
- Rotating lamp

UNDERCARRIAGE

- Reinforced track guard (2 units each side)
- Full track guard
- Track undercover

ATTACHMENT

- Hammer and crusher piping
- Parts for hammer
- Parts for hammer and crusher
- Parts for 2 speed selector
- Assist piping
- Additional pump (30 l/min, 50 l/min)
- Clamshell piping
- Quick coupler piping
- Reinforced link B
- Reinforced arm

OTHERS

- Hose rupture valves
- Overload warning device
- Electric fuel refilling pump
- Auto-lubrication pump
- 5 250 kg demolition counterweight (ZAXIS210 / 210LC)
- Pre-cleaner
- Fuel double filters
- Large-capacity battery
- Quick heater system
- High-performance full-flow filter (with restriction indicator)
- Bio oil

Hitachi Construction Machinery (Europe) NV

Souvereinstraat 16, 4903 RH Oosterhout, P.O. Box 404, 4900 AK Oosterhout, The Netherlands
T +31-(0)162 48 44 00, F +31-(0)162 45 74 53, www.hcme.com

Siciliëweg 5, Haven 5112, 1045 AT Amsterdam, P.O. Box 59239, 1040 KE Amsterdam, The Netherlands
T +31-(0)20 44 76 700, F +31-(0)20 33 44 045, www.hcme.com



**Breaking
new
ground**

HITACHI