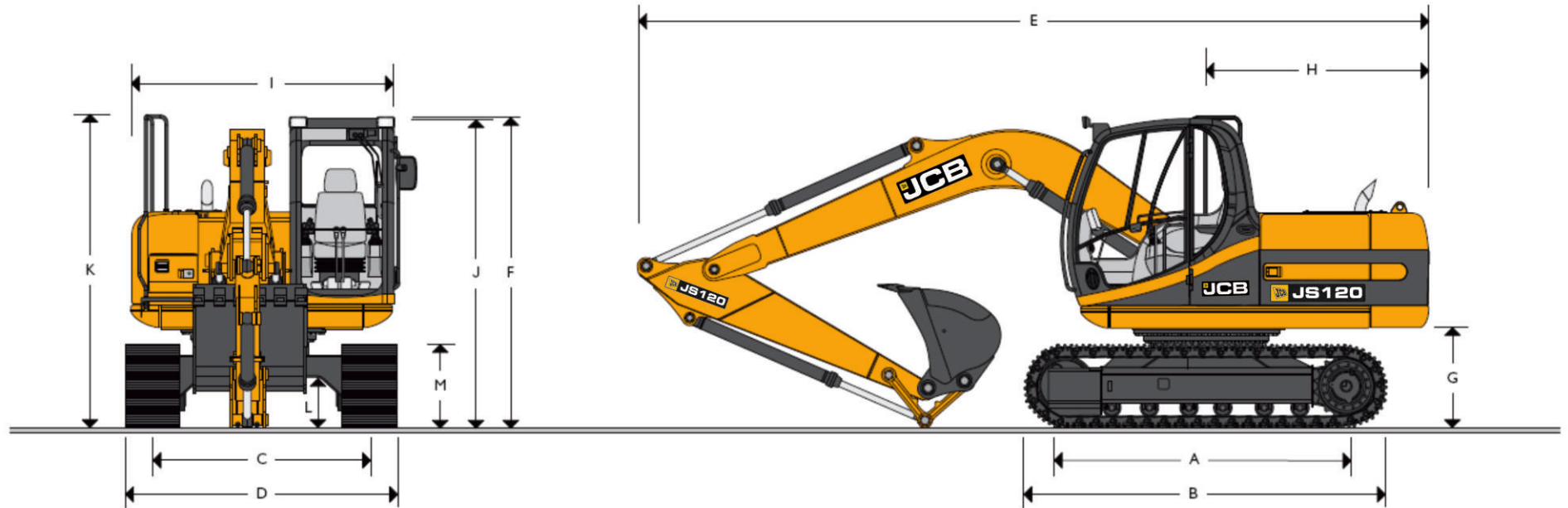




MAX. OPERATING WEIGHT : 12600 kgs

MAX. ENGINE POWER : 80 hp



## STATIC DIMENSIONS

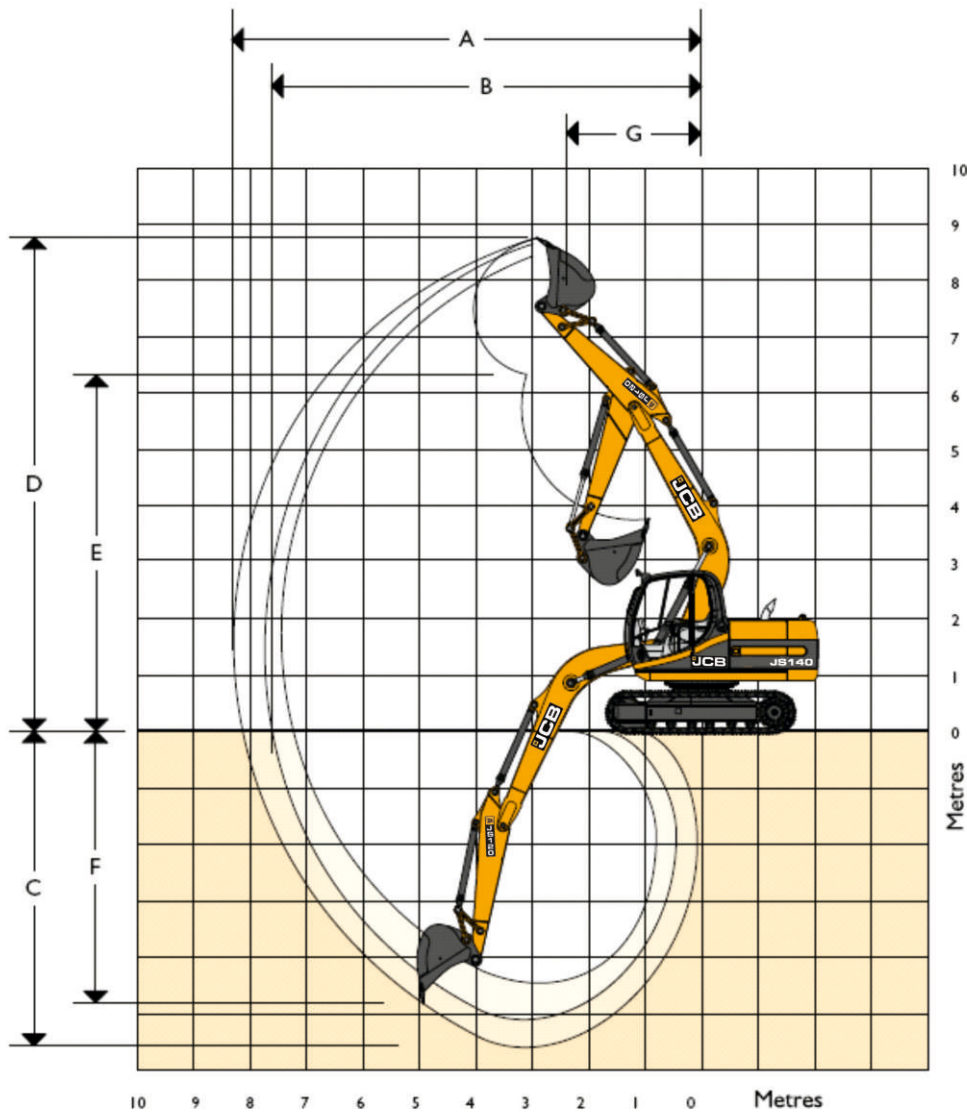
	mm (ft-in)		
A Track length on ground	2580 (8-6)		
B Undercarriage overall length	3317 (10-11)		
C Track gauge	1990 (6-6)		
D Width over tracks (500 mm trackshoes)	2490 (8-2)		
D Width over tracks (600 mm trackshoes)	2590 (8-6)		
D Width over tracks (700 mm trackshoes)	2690 (8-10)		
	<b>1.95m (6ft 5in)</b>	<b>2.25m (7ft 5in)</b>	<b>2.8m* (9ft 2in)</b>
E Transport length with Monoboom	7272 (23-10)	7272 (23-10)	7307 (24-0)
F Transport height with Monoboom	2864 (9-5)	2864 (9-5)	2864 (9-5)

	mm (ft-in)
G Counterweight clearance	905 (3-0)
H Tail swing radius	2050 (6-9)
I Width of superstructure	2410 (7-11)
J Height over cab	2839 (9-4)
K Height over grab rail	2864 (9-5)
L Ground clearance	464 (1-6)
M Track height	767 (2-6)

\* Machine in transport position

\* All dimensions, weights and timings are variable within 1.5% JCB reserves the right to change specifications without prior notice.





**WORKING RANGE**

<b>Boom length:</b>		<b>4.40m (14ft 5in)</b>
<b>Dipper length:</b>		<b>1.95m (6ft 5in)</b>
A	Maximum digging reach	mm (ft-in) 7610
B	Maximum digging reach (on ground)	mm (ft-in) 7452
C	Maximum digging depth	mm (ft-in) 4833
D	Maximum digging height	mm (ft-in) 8582
E	Maximum dumping height	mm (ft-in) 6120
F	Maximum vertical wall cut depth	mm (ft-in) 4275
G	Maximum swing radius	mm (ft-in) 2136
	Bucket rotation	182°
	Maximum dipper tearout (ISO 6015)	kgf (lbf) 5792
	Maximum bucket tearout (ISO 6015)	kgf (lbf) 8614

\* All dimensions, weights and timings are variable within 1.5% JCB reserves the right to change specifications without prior notice.





## ENGINE

Model : JCB 444 NA  
 Type : Water Cooled, 4 stroke, 4-cylinder, direct injection  
 Gross Power : (SAE J1995) 80 hp at 2200 RPM  
 Piston : 4.4 litres.  
 Displacement  
 Air filtration : Dry element with secondary safety element  
 Cooling : Water cooler via large capacity radiator with anti block 'wavy' fins.  
 Starting system : 12 volt.  
 Batteries : 1 x 12 volt. Heavy Duty.  
 Alternator : 12 volt. 95 amp.

## CAB

Press steel with high strength rolled section frame. Excellent digging, loading and positioning visibility. Parallelogram wiper option. Fresh air ventilation and operator faces fan. Fully adjustable deluxe suspension seat with arm rest adjustment.

## CONTROLS

Excavator : All servo lever operated to ISO control pattern, independently adjustable to the seat.  
 Tracks : Individually servo operated by foot pedal or hand lever.  
 Auxiliary : Via servo operated food pedal.  
 Horn : Operated via servo lever mounted button.

## FORCES

Unmatched digger forces enable faster cycle time.

Dipper tearout Max.	5762 kgf
Bucket tearout Max.	8614 kgf

## EXCAVATOR END

Monoboom is available with a 1.95 m dipper as a standard fitment. Boom and dipper are heavy-duty in construction for arduous operation and hydraulic hammer applications.

## EXCAVATOR BUCKET

All buckets are JCB type fully welded steel, with sealed, hardened steel pivot pins and replaceable wear parts.

Bucket size	Capacity
Max. width toe plate	
1041mm	0.65 cu.m.
922mm	0.5 cu.m.

## HYDRAULIC SYSTEM

A variable flow load sensing system with flow on demand, variable power output and servo operated, multi-function open centre control.

Main pumps : 2 variable displacement axial piston type.  
 Maximum flow : 2 x 111 lpm  
 Servo pump : Gear type  
 Maximum flow : 20 L/min

### Control valve

A combined four and five spool control valve with auxiliary service spool as standard. When required twin pump flow is combined to boom, dipper and bucket services for greater speed and efficiency.

### Relief valve settings

Boom / Arm / Bucket : 320 bar  
 Swing circuit : 279 bar  
 Travel circuit : 320 bar  
 Pilot control : 40 bar

## FILTRATION SYSTEM

The hydraulic components are protected by the highest standard of filtration to ensure long hydraulic fluid life upto 5000 hrs (subject to SOS & recommended maintenance practices) and component life.

In tank : 150 micron, suction strainer.  
 Main return line : 10 micron, fibre form element.  
 Plexus Bypass line : 1.5 micron, paper element.  
 Pilot line : 10 micron, paper element.  
 Hydraulic hammer return : 10 micron, reinforced microform element.

### Cooling

Worldwide cooling is provided via a full return line air blast cooler with anti-block wavy cooling fins.

## SWING SYSTEM

Swing motor : Axial piston type  
 Swing brake : Hydraulic braking plus, automatic spring applied disc type parking brake.  
 Final drive : Planetary reduction  
 Swing gear : Large diameter, internally toothed fully sealed grease bath lubricated.  
 Swing speed : 12 RPM.

## UNDERCARRIAGE

Construction : Fully welded. "X" frame type with central belly guarding and sloping side members with dirt relief holes under top rollers.

Track Shoe : 500mm (Standard)  
 Upper & lower rollers : Heat treated, sealed and lubricated.  
 Track adjustment : Grease cylinder type.  
 Track idler : Sealed and lubricated, with spring enhanced recoil.

No. of track guides : 1 per side  
 No. of lower rollers : 6 per side  
 No. of upper rollers : 1 per side  
 No. of track shoes : 41 per side

## TRACK DRIVE

Type : Fully hydrostatic  
 Travel motors : Axial piston type, fully guarded within undercarriage frame.  
 Final Drive : Planetary reduction, bolt-on sprockets  
 Service brake : Hydraulic counter balance valve to prevent over speeding on gradients.  
 Park brake : Disc type, spring applied, automatic hydraulic release.  
 Gradeability : 70% (35 deg.) continuous  
 Travel Speed : 3.5 kmph (Max.)  
 Tractive effort : 102.6 KN (10458 kgf)

## WEIGHT AND GROUND BEARING PRESSURE

Standard machine with bucket, operator

Full capacity lubes and fuel

Operating Weight	12600 kg
Ground bearing pressure	0.44 kg/sq.cm

## STANDARD / OPTIONAL EQUIPMENT

Auto idler	Std
Heavy-Duty Dipper	Std
Heavy-Duty Boom	Std
Plexus hydraulic oil filtration	Std
Air pre-cleaner / scavenge system	Std
Engine fan guard	Std
Double element air cleaner	Std
Heavy-duty alternator	Std
Heavy-duty battery	Std
Battery Cut off switch (Manual)	Std
Interior Light	Std
Cabin Fan	Std
Suspension Seat	Std
Operator's storage space	Std
Removable floor mat	Std
Auxiliary pipe work mounting brackets	Std
Work lights-boom & cabin top mainframe mounted	Std
Undercarriage belly guarding	Std
Upper structure under covers	Std
Twin track guides	Std
Tool kit & storage area	Std
Handrail & nonslip walk ways	Std
Electric refuelling pump	Opt
Windscreen wiper	Opt
Radio & cassette player	Opt
External mirrors	Opt
Heavy-duty bucket	Opt
Hydraulic hammers	Opt
Auxiliary pipe work	Opt
Rear work light	Opt
Track shoe : 600/700/850mm	Opt
First aid kit	Opt
Fire extinguisher	Opt
Cab guard	Opt
Reflectors	Opt

## SERVICE CAPACITIES

Fuel tank	253 lt
Engine Coolant	15 lt
Engine oil	14 lt
Swing reduction gear	2.2 lt
Track reduction gear (each side)	3.0 lt
Hydraulic system	124.0 lt
Hydraulic tank	73.0 lt

\* All dimensions, weights and timings are variable within 1.5% JCB reserves the right to change specifications without prior notice.





**LIFT CAPACITIES - Dipper Length: 1.95m (6ft 5in), 4.40m (14ft 5in) Monoboomb, Trackshoes: 500mm (20in), No bucket.**

JSI20

Reach	1.5m (4ft 11in)		3m (9ft 10in)		4.5m (14ft 9in)		6m (19ft 8in)		7.5m (24ft 7in)		Capacity at Max Reach		
Load Point Ht.	kg	kg	kg	kg	kg	kg	kg	kg	kg	kg	kg	kg	mm
7.5m (24.7ft)													
6.0m (19.8ft)													
4.5m (14.9ft)			3090*	3090*	2930*	2720					2240*	2000	5479
3.0m (9.10ft)			4510*	4400*	3320	2480	2200	1640			2170	1610	6067
1.5m (4.11ft)			5680	3990	3090	2270	2100	1550			1990	1470	6248
0m			5590	3890	2960	2150	2040	1500			2020	1480	6052
-1.5m (-4.11ft)	6120*	6120*	5510	3840	2940	2130					2310	1690	5446
-3.0m (-9.10ft)			4950*	3890							3300	2410	4247
-4.5m (-14.9ft)													

**LIFT CAPACITIES - Dipper Length: 2.25m (7ft 5in), 4.40m (14ft 5in) Monoboomb, Trackshoes: 500mm (20in), No bucket.**

JSI20

Reach	1.5m (4ft 11in)		3m (9ft 10in)		4.5m (14ft 9in)		6m (19ft 8in)		7.5m (24ft 7in)		Capacity at Max Reach		
Load Point Ht.	kg	kg	kg	kg	kg	kg	kg	kg	kg	kg	kg	kg	mm
7.5m (24.7ft)													
6.0m (19.8ft)					2630*	2630*					2050*	2050*	4717
4.5m (14.9ft)			2760*	2760*	2730*	2730*					1820*	1820*	5800
3.0m (9.10ft)			4150*	4150*	3190*	2520	2210	1660			1760*	1510	6360
1.5m (4.11ft)			5710	4030	3130	2310	2100	1560			1840*	1390	6528
0m			5560	3870	2980	2170	2030	1490			1900	1390	6346
-1.5m (-4.11ft)	5610*	5610*	5490	3830	2930	2130					2130	1570	5769
-3.0m (-9.10ft)	8630*	8630*	5330	3870	3010	2200					2890	2120	4654
-4.5m (-14.9ft)													

Lift capacity front and rear.

Lift capacity full circle.

- Notes:
1. For lifting capacity including bucket, subtract total weight of bucket of bucket and quickhitch from above values.
  2. Lifting capacities are based on ISO 10567, that is: 75% of minimum tipping load or 87% of hydraulic lift capacity, whichever is the less. Lifting capacities marked\* are based on hydraulic capacity.
  3. Lift capacities assume that the machine is on firm, level ground.
  4. Lift capacities may be limited by local regulations. Please refer to your dealer.