



# 600 Series Motor Graders



## 685B



### 685B Motor Grader

**Features include:**

- 100 HP CAT Tier 3 Diesel Engine
- 10-foot Sliding Moldboard
- Tandem Drive
- Electronic Gauge Package
- Fail Safe Braking
- Two-speed Hydrostatic Transmission
- Vandalism Protection Package
- Automatic Engine Shutdown System
- Mid-mount Scarifier
- Fully Enclosed Cab (optional)
- Front Wheel Assist (optional)

Designed with the Paving Professional in Mind.®

# Best in Class

# LeeBoy

## Power and Economy in a Mid-Sized Grader

The 685B Motor Grader is designed to deliver power, performance and durability at the jobsite. Whether building a road, cutting a ditch, preparing a work site or doing fine grading, the LeeBoy 685B Motor Grader is a versatile workhorse and features operator comfort and safety, easy control, and trouble-free operation.



*Pictured with customer-mounted Trimble GPS system.*

## 10-Foot Sliding Moldboard



The 685B Motor Grader is equipped with a sliding moldboard with a total sideshift reach of 36 inches. This feature enables the operator to shift the blade in or out of hard to reach areas. The circle shift option gives the operator additional moldboard reach. The 10-foot wide moldboard also offers removable and adjustable shims that keep the blade tight for fine grading.

The optional 7-foot front blade gives the operator an additional tool for grading in hard to reach areas, such as corners or against walls. (Shown here with wheel lean.)

## Premium Powertrain

### Efficient Turbo Engines

The 685B Motor Grader is powered by a 100 HP CAT Tier 3 turbo-charged diesel engine.



### Hydrostatic Drive System

The tandem power drive system is a hydrostatic transmission with a heavy-duty, off-road, Dana two-speed gear box and no-spin differential.

### Front Wheel Assist Option

The 685B Motor Grader offers agencies and contractors enhanced pulling power with its front wheel assist providing all-wheel traction.





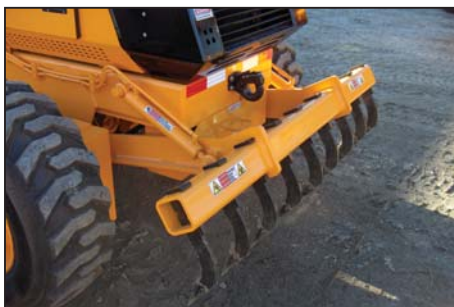
## Articulated Design

LeeBoy 685B Motor Grader is designed with an 18-degree articulation in either direction. This offers additional mobility that can accomplish the most demanding grading task.



## Center Mount Scarifier

The center-mounted scarifier gives the operator the ability to rip or loosen hardened surfaces with its steel teeth. A rear-mounted scarifier option is available.



## Enclosed Turnable Design



The turntable—designed and engineered by LeeBoy—is enclosed in a sealed housing which prevents wear from dirt and moisture. This advanced design provides quick and easy adjustments and keeps the turntable true for fine grading.

## Configuration Checklist

	<b>685B</b>
100 HP CAT Tier 3 Turbo Diesel Engine	✓
Automatic Engine Shutdown System	✓
10-foot Sliding/Tilting Moldboard	✓
Vandalism Protection Package	✓
Leaning Front Wheels	✓
Dual Stage Air Cleaner	✓
Operating Light Package	✓
Electronic Gauge Package	✓
Suspension Seat	✓
Fail Safe Braking System	✓
Mid-mount Scarifier	✓
Rotating Beacon	✓
Blade Float Control	✓
Back-up Alarm	✓
Fully Enclosed Cab (w/heater and front wiper)	optional
Front Wheel Assist	optional
Rear Washer/Wiper	optional
12-foot Sliding Moldboard	optional
Circle Side Shift	optional
7-foot Front Blade	optional
Loader and 1/2-yard Bucket	optional
Rear-mounted Scarifier (in lieu of center mount)	optional
Front-mounted Scarifier (in lieu of center mount)	optional
Air Conditioning (with cab option)	optional
Dead Engineering Steering	optional
Cold Weather Engine Package	optional

# Specifications

## 685B Motor Grader

ENGINE	
Make	CAT Tier 3 Diesel Engine
Performance	100 HP (75 kw)
DIMENSIONS	
Weight	15,200 lbs (6,895 kg)
Length	21' 5" (6.53 m)
Width	7' 4" (2.24 m)
Height with Canopy	9' 5" (2.87 m)
Height with Cab	10' 4" (3.15 m)
MOLDBOARD	
Width	10' (3 m)
Height	18" (.5 m)
Sideshift	3' (.91 m)
Tilt	38°
Lift Above Ground	12.5" (3.8 m)
Penetration	13" (33 cm)
Rotation	120°
CAPACITIES	
Fuel	40 gal (151.4 l)
Hydraulic	32 gal (121 l)

## Loader With Bucket Option

The 685B Motor Grader can be fitted with a loader and 1/2-yard bucket, making the unit even more versatile on the job site. The bucket has a raise height of 10 feet for material loading.



*LeeBoy makes continuous improvements to all its products and reserves the right to change specifications without notice. Photos and illustrations may contain standard and optional equipment.*

685B Motor Grader- 09-11-1.5K  
#14613

# LeeBoy

 **VT LeeBoy**  
A company of VT Systems

LeeBoy has designed and manufactured superior asphalt paving and grading products since 1964. The LeeBoy brand is well-known for its quality and innovative design. This standard of quality provides contractors with dependable, low maintenance equipment with a high re-sale value.

**"LeeBoy is dedicated to providing top quality parts and service support on every unit sold."**

## Other Members of the LeeBoy Family of Products...



8816B Asphalt Paver



420 Pneumatic Roller



CSM - CSH Chip Spreader

**Contact your LeeBoy dealer:**

