

JCB LIFTALL | I253

LIFTING PERFORMANCE TO A NEWER HEIGHT



A Product of Hard Work



JCB LIFTALL THE BEST IS NOW HERE

How do you design a construction equipment, which is better than any other – only JCB would know, with presence in 150 countries, offering of over 285 models worldwide, being the largest manufacturer of construction equipment in India (with one out of every two machines being a JCB) and unmatched dealer network.

JCB has now designed the Liftall, which will lift performance to newer heights.



Fast Facts

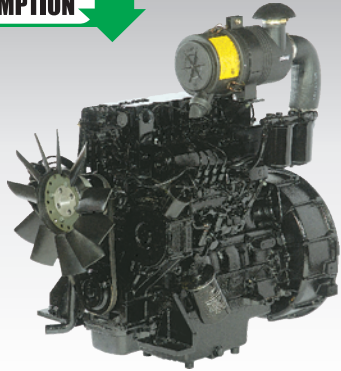
- Lift and Travel Capacity (Maximum) -12T ; Load Moment - 22.8 tm.
- 3 part telescopic slotted boom.
- 12.5 m maximum under hook height.
- 10.2 m maximum horizontal reach.
- Kirloskar Diesel Engine – BS-III 49 BHP @ 2000 RPM ; better serviceability.
- Machine designed for better fuel economy.
- 30 Km/hr travel speed (Maximum Unladen).
- Dust and water proof external IP69 electrical connectors.
- Comfortable operator environment with excellent all round visibility.
- Rope self compensation system for automatic leveling of load.
- 4.7T lift capacity from 11m below ground level.
- World Class JCB quality and extensive Dealer Network - 370+ nationwide outlets.



Operator's View

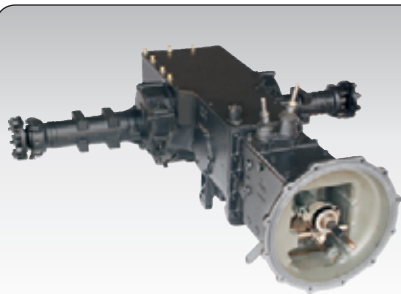
Engine Performance

**LOW FUEL
CONSUMPTION**



- Highly fuel efficient powerful Kirloskar BS - III diesel engine developing 49 BHP @ 2000 RPM; designed to work in hot and dusty conditions, making it very reliable.
- Water separator provided for getting more reliability and longer fuel pump life.
- Long service intervals (400 hrs) for achieving better economy.
- Conforming to emission norms as per CMVR Bharat Stage-III.
- Service support for engine from nationwide JCB dealers.

Durable and Reliable Transmission



- Specially engineered rugged mechanical transmission, with straight axle, designed to suit crane application in all kind of terrain.
- 12" dia. clutch for long working hours and very durable for long life.
- 30 Km/hr travel speed (unladen) for faster coverage of long distances.

Robust Structure



- Robust and heavy duty crane structure made of Quality steel.
- JCB manufacturing process used to achieve consistent quality and reliability.

- Structural integrity achieved through rigorous design involving F.E.A. and strain gauging.
- 3600 sq.cm. surface area of main boom.



Excellent Maneuverability



- Articulated chassis : $\pm 56^\circ$
- 6.45 m clearance circle radius gives easy maneuverability and increased productivity in space constrained areas.
- Rear axle oscillation ($\pm 5.5^\circ$) enables the JCB Liftall to efficiently work in the rough terrains.

Comfortable and Safe Operator Environment

- Aesthetically built spacious tall boy cabin.
- Excellent all round visibility:
 - Curved and slanted low bonnet line for front visibility.
 - Front wind shield designed for clear upward vision on high lift operations.
 - Additional mirror provided for clear side view on front.
- Operational levers and console located ergonomically with least fatigue.
- Excellent legroom and adjustable seat positioning.
- Insulated roof and face fan to keep operator cabin cool.
- High thickness floor mat designed for better insulation of cabin against noise and vibrations.
- Specially designed tool box with better accessibility.
- Cushioned seating space to accommodate helpers, good enough for comfortable overnight sleep on remote / outstation project sites.



Reliable Electrics (IP69) and Instrumentation



- External electrical connectors conform to IP69 European Standard, ensuring complete protection from dust and water.
- Ergonomically designed front mounted console provides easy visibility to all parameters for safe operation.
- Instrument cluster consists of :
 - Fuel Gauge
 - Engine RPM meter
 - Digital Hour meter
 - Water Temperature Gauge
 - Air Pressure Gauge
 - Mobile Charger



Serviceability

- Unmatched network of world class JCB dealerships.
- Easily accessible hydraulic and diesel tank for convenient filling.



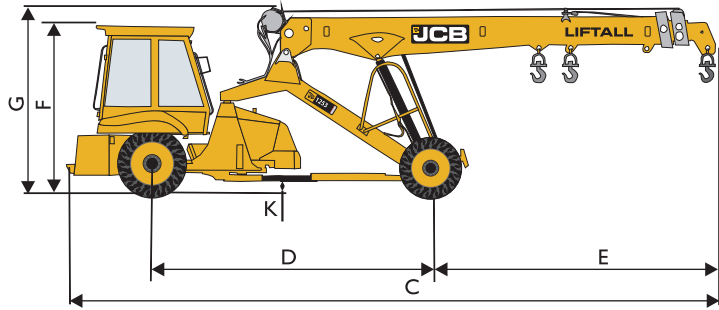
- Easily accessible clutch and rear brake for convenient maintenance.
- Remote greasing points for transmission hubs and clutch.

Safety Features

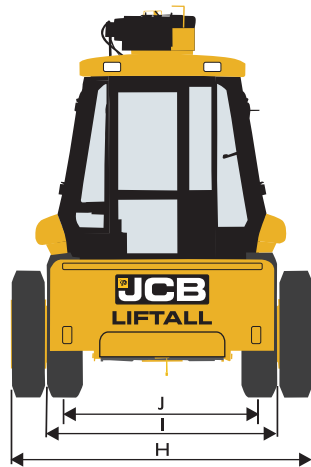


- Audio / Visual alarm warn operator of Overloading.
- Audio / Visual alarm warn against loss of pressure in pneumatic circuit for brakes.
- Fail Safe Brakes on Hoist.
- Protection valve in the lift line against hose burst.
- Warning against parking brakes-on.
- Ram Guard for protection from swinging loads.
- Rugged and sturdy front bumper.
- Large size Rear & Front side view mirrors.
- All windows fitted with toughened safety glass.
- Decal on machine for operational safety.
- ARAI certified for meeting the mandatory road worthiness requirements.

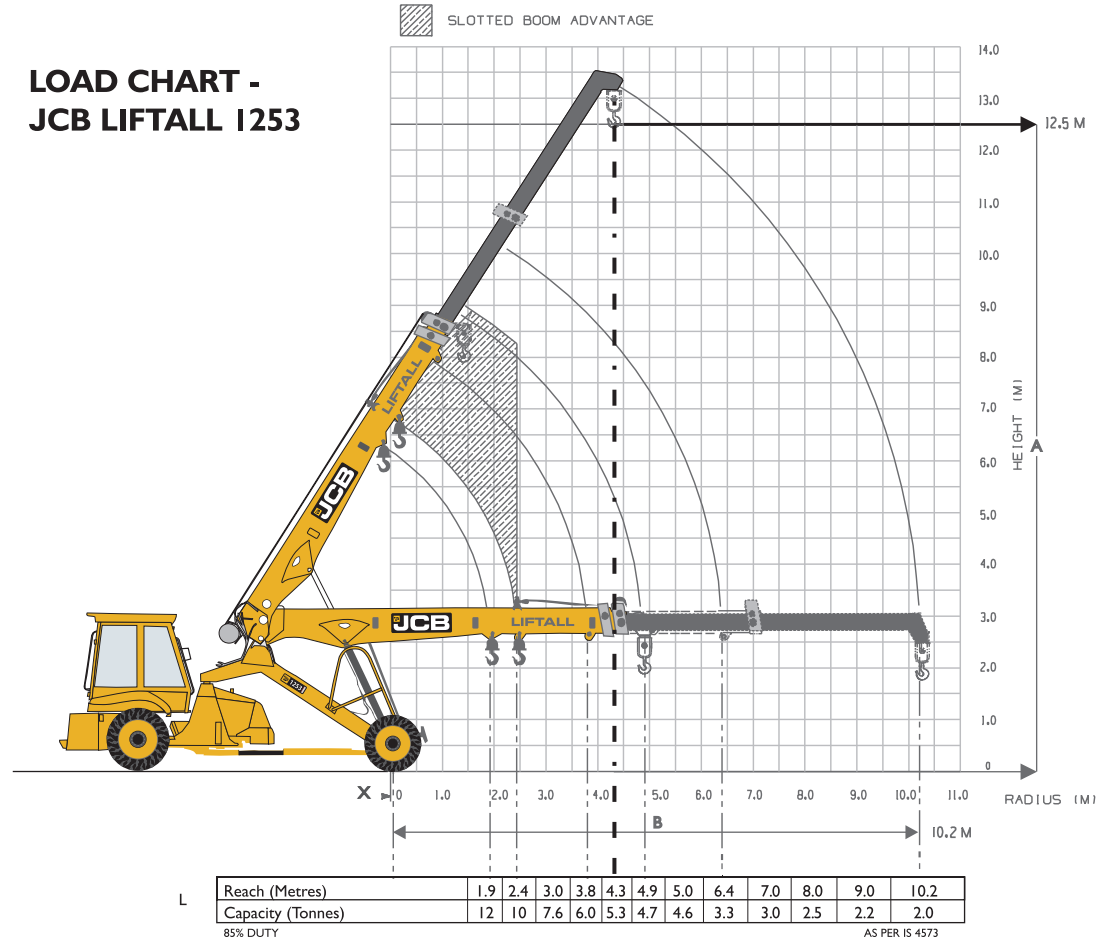
STATIC DIMENSIONS



All dimensions are in mm



LOAD CHART - JCB LIFTALL 1253



DIMENSIONS

A	Maximum Height of Lift (under hook)	12500 mm	E	Overhang	5000 mm	I	Front Track	1952 mm
B	Maximum Horizontal Reach	10200 mm	F	Height Over Cab	2983 mm	J	Rear Track	1600 mm
C	Travel Order Length	11370 mm	G	Height Over Winch	3276 mm	K	Min. Ground Clearance	277 mm
D	Wheel Base	4875 mm	H	Overall Width	2495 mm	L	Lift Capacity at X distances from centre of front wheels	

All dimensions, weights and timings could have variance. JCB reserves the right to change specifications without prior notice.

ENGINE

- Kirloskar BS-III 4R810 - Four cylinder water cooled naturally aspirated diesel engine.
- Engine conforming to BS-III emission norms.
- Rated Power 49 BHP @ 2000 RPM.
- Max Torque 210 NM @ 1300 RPM.

TRANSMISSION

- Heavy duty gear box with 8 forward and 2 reverse speeds with high-low speed selector mechanism through lever.
- Single plate dry type friction clutch – 12" dia.

BRAKES

Front brakes: Pneumatic assisted hydraulically operated mechanical brakes.

Rear brakes: Mechanical disc type brake actuated through a slave cylinder operated through servo cylinder.

Parking brakes: Mechanically actuated brake on rear wheels.

BOOM

3 section slotted boom, telescopically extendable from 4.9 m to 10.2 m through double acting hydraulic ram.

Max under hook height : 12.5 m

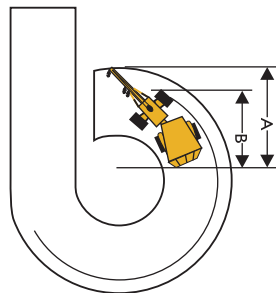
WINCH

- Planetary type reduction gear box hydraulic winch suitable for heavy duty crane application.
- Lift capacity 10T (with 4 falls).
- 13 mm diameter anti twist wire laminated rope.
- Rope self compensation system for automatic leveling of load.

STEERING

Hydraulic articulated steering with 56° articulation on either side through two double acting rams.

TURNING RADIUS



Circle radius:

A. Outside Boom	:	6450 mm
B. Outside Tyres	:	5250 mm

HYDRAULICS

- Vane type hydraulic pump for better crane application.
- Four spool flow directional control valve with maximum operating pressure of 185 bar.
- Control valve having 4 separate levers for crane operations from operator cabin : Boom up / down, Telescoping in / out, Winching and Steering.
- 100 Mesh size suction strainer.
- Direct tank top mounted type return line filter with 25 micron size full flow filtration.

TYRES

Front : 11.00 x 20.00 – 16 PR (4Nos).
Rear : 13.00 x 24.00 – 12 PR (2Nos).

ELECTRICALS

- 12V system with Battery capacity of 88AH.
- Charging Alternator with Max output 55 Amps.
- IP69 external connectors

OPERATING WEIGHT

11000 kgs (Unladen)

FLUID CAPACITIES

Engine	:	8.5 It
Fuel Tank	:	60 It
Hydraulic Tank	:	90 It

OPERATIONAL CYCLE TIMINGS

(No load at rated engine RPM)

Boom Raising	:	22 secs.
Boom Lowering	:	20 secs.
Telescopic In	:	8 secs.
Telescopic Out	:	12 secs.
Hoist Line Speed	:	53 m/min.
Steering (lock to lock)	:	6 secs.

STANDARD EQUIPMENT

- Front Bumper
- Lift Ram Guard
- Tool Kit
- Front and Rear Lights
- Reflectors and Side Indicators
- Mobile Charger
- Rear & Side View Mirrors – 2 nos
- Standard Gauges

OPTIONAL EQUIPMENT

- Spark Arrestor
- Fire Extinguisher
- Extra Hook
- Fog Lamp, Beacon Lights and Spot Lamps
- Tackle Box
- Also available without Winch

The accessories shown may not be part of the standard equipment. JCB India reserves the right to change specifications without prior notice.

Chairman's Vision

“ Our strategy is to deliver the best customer support in our industry – putting the customer at the very heart of our business. ”

JCB Corporate Mission

“ JCB's business is to manufacture, market and support Construction and Earthmoving equipment. ”

Our aim is to exceed customer expectation through innovation, continuous quality improvement and people involvement.

We will profitably grow along with our stakeholders and achieve market leadership in the core segments of our business. ”



India's Largest Manufacturer of Construction Equipment

JCB INDIA DEALER NETWORK



- JCB Dealers : 53
- JCB Dealer Outlets : 370+

We Care. That's why we're Everywhere.

Your Dealer: