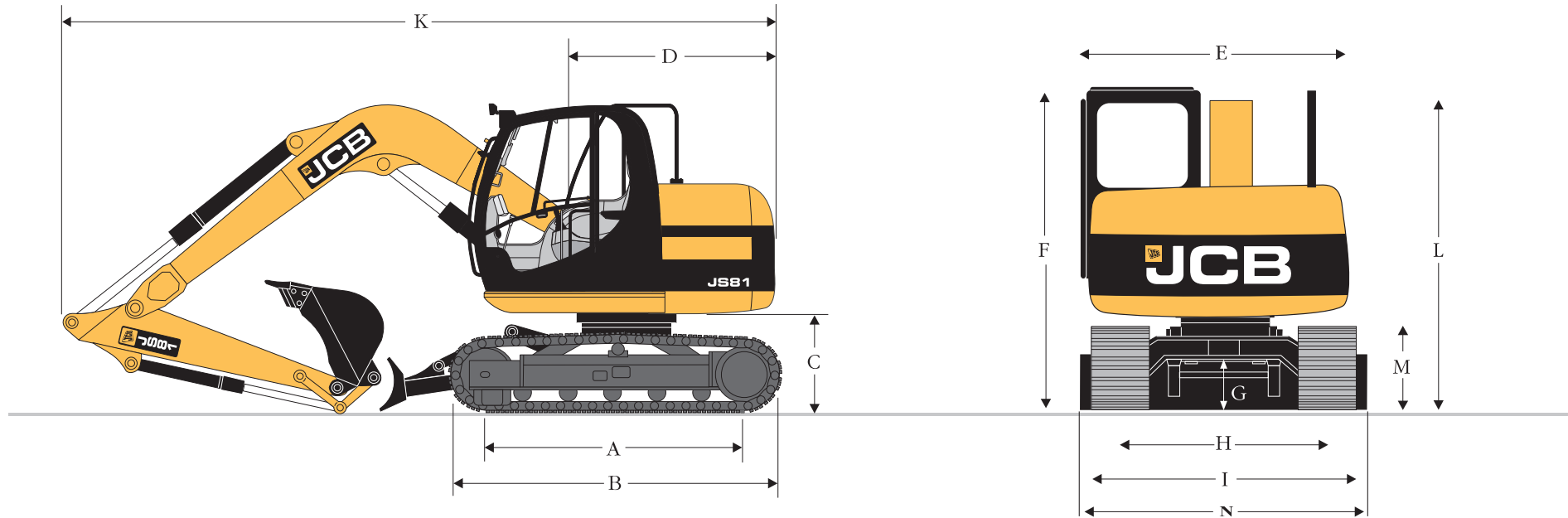




GROSS ENGINE POWER : 76 hp
 MAX. OPERATING WEIGHT : 8100 kgs



STATIC DIMENSIONS

| | | |
|---|--|---------|
| A | Track length on ground | 2200 mm |
| B | Undercarriage overall length | 2830 mm |
| H | Track gauge | 1700 mm |
| I | Width over tracks (450 mm shoes) | 2150 mm |
| K | Transport with Monoboom and 2.4 m dipper* | 5900 mm |
| L | Transport height with Monoboom and 2.4 m dipper* | 2690 mm |
| C | Counterweight clearance | 767 mm |
| D | Tail swing radius | 1580 mm |
| E | Width of superstructure* | 2220 mm |

| | | |
|---|------------------------------|---------|
| F | Height over cab | 2625 mm |
| N | Doze blade width (back fill) | 2320 mm |
| G | Ground Clearance | 363 mm |
| M | Track height | 665 mm |
| | Dozer blade (Standard) | |
| | Max height (Above ground) | 375 mm |
| | Dig depth (Below ground) | 235 mm |
| | Approach angle | 26° |
| | Width | 2320 mm |
| | Height | 460 mm |
| | Reach in front of tracks | 480 mm |

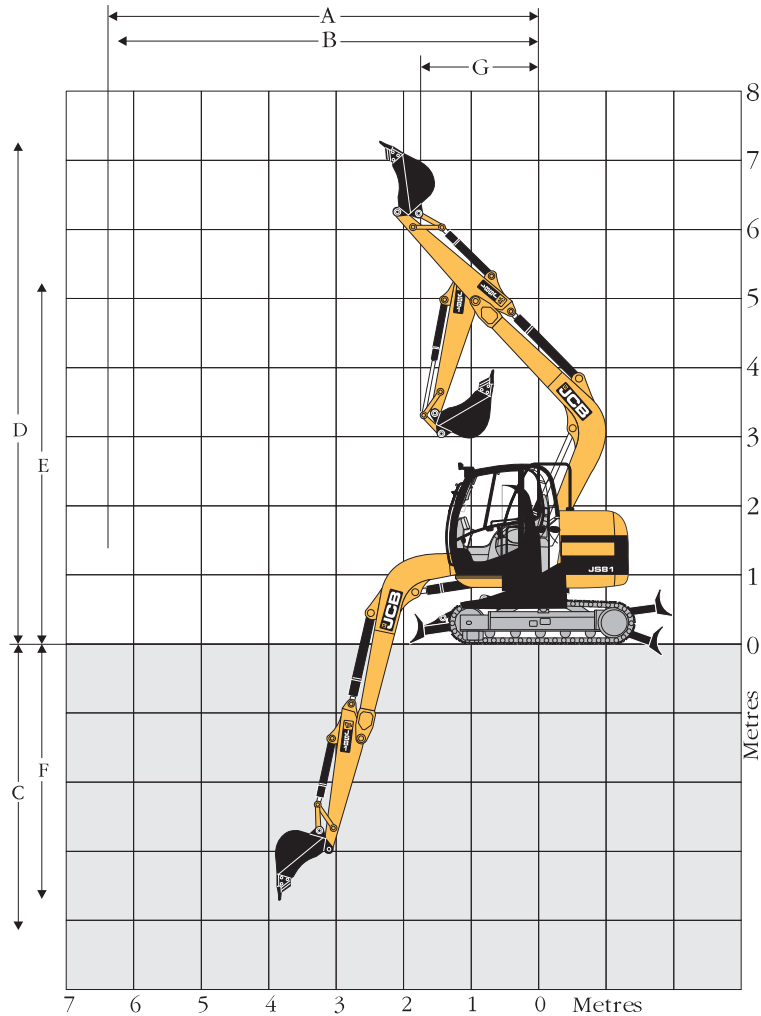
*With cab hand rail removed

* All dimensions, weights and timings are variable within 1.5% JCB reserves the right to change specifications without prior notice.





WORKING RANGE



| Boom | 3.7 m Monoboam | |
|-------------------------------------|----------------------|--------------------|
| Dipper | 1.74 m (Standard) | 2.18 m (Option) |
| A Maximum digging reach | 6360 mm | 6810 mm |
| B Maximum digging reach (on ground) | 6220 mm | 6680 mm |
| C Maximum digging depth | 4138 mm | 4573 mm |
| D Maximum digging height | 7237 mm | 7667 mm |
| E Maximum dumping height | 5157 mm | 5567 mm |
| F Maximum vertical wall cut depth | 3483 mm | 4053 mm |
| G Minimum swing radius | 1750 mm | 2050 mm |
| Dipper tearout | 4000 kgf | 3500 kgf |
| Bucket tearout - all machines | 5700 kgf | 5700 kgf |
| Bucket rotation (Deg) | 184° | 184° |

Short boom & dipper options :-

Max dig depth : 2920 mm
 Max dig reach (on ground) : 5300 mm

ATTACHMENTS

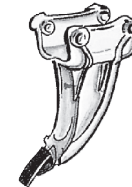
Rock Breaker :

Operating weight : 520 kg
 Length-without tool : 1300 mm
 Working-length-Std.tool : 365 mm
 Steel diameter : 70 mm



Ripper Tooth

the powerful ripper tooth is designed for breaking up hard surfaces such as tarmacadam and concrete. It comes along with a replaceable tip.



Ditch Cleaning Bucket

Specially profiled for ditch cleaning or grading. Drainage holes on the bottom and sides allow easy drainage of water while retaining the weeds and muck.

Specification :

Width : 1525 mm
 Capacity : 0.22 cu.m

* All dimensions, weights and timings are variable within 1.5% JCB reserves the right to change specifications without prior notice.





ENGINE

Model : Kirloskar 4R 1040
Type : Water-cooled, 4-stroke, 4-cylinder
Gross power : 76HP at 2200 RPM (SAEJ 1995)
Battery : 100 AH
Starting system : 12 Volt
Alternator : 85A
Aspiration : Natural

CAB

1. Steel cab with high strength section frame. Vibration isolated by four hydraulically damped mountings.
2. Front windscreen opening type, sliding LH and RH rear windows. Transparent roof on front for excellent visibility on top.
3. Fully adjustable deluxe suspension seat with head rest, arm rests and back rest recline.
4. Excellent all round visibility.

CONTROLS

Excavator : All servo lever operated, to ISO control pattern.
Tracks : Individually servo operated by foot pedal or hand lever. Speed selection via hand operated switch.
Auxiliary : Via foot operated servo pedal.
Controls Isolation : Gate lock lever at cab entrance, and a console mounted switch.
Engine Speed : Hand operated control lever.
Engine Stop : Hand operated stop cable.
Instrumentation : Instrumentation panel contains dial pointer type gauges for fuel level, engine water temperature readings & hour meter. Whilst audible & visual warnings indicate low engine oil pressure, low engine coolant level, engine overheat; no battery charge, hydraulic oil overheat, indication lights are incorporated in panel to indicate swing lock operation, servo control isolation, high travel speed and E & P modes of operation

EXCAVATOR END

Choice of either dipper lengths, to suit the requirements of reach, dig depth, load-over height tear-outs and site versatility

EXCAVATOR BUCKET

All buckets are JCB type fully welded steel, with hardened steel pivot pins and replaceable wear parts.

| Bucket size | Capacity | Weight |
|-----------------------------------|------------|--------|
| Max. width toe plate (SAE HEAPED) | | |
| 350 mm | 0.09 cu.m. | 170 kg |
| 455 mm | 0.16 cu.m. | 145 kg |
| 800 mm | 0.24 cu.m. | 178 kg |
| 950 mm | 0.30 cu.m. | 193 kg |
| 965 mm | 0.32 cu.m. | 215 kg |

(Welded Adaptors)

HYDRAULIC SYSTEM

Power Modes

The equipment has two power modes

Economy (E) :

For optimum output and fuel economy

Productivity (P) :

For high output.

Pumps

Main pumps : Variable displacement axial piston type
 Maximum flow : 2 x 80 lpm (main)
 Servo pump : Gear type maximum flow
 Dozer : Gear type, maximum flow 21.5 lpm

Control Valve :

A combined four and five spool control valve with auxiliary service spool as standard. When required, twin pump flow is combined to boom, dipper and bucket services for greater speed and efficiency.

Relief Valve Setting

Boom / Arm / Bucket : 284 bar
 Swing Circuit : 190 bar
 Travel Circuit : 284 bar
 Boost to : 300 bar

Hydraulic Cylinders

Double acting type, with screwed end caps and hardened steel bearing bushes. End cushioning is fitted as standard on boom and dipper rams.

Filtration : The hydraulic components are protected by the highest standard of filtration to ensure long hydraulic fluid life upto 5000hrs (subject to SOS) and component life.

In tank : 105 micron, suction strainer

Main return line : 10 micron, fibreform element

Plexus filtration system : 1.5 micron, paper element

Pilot line : 10 micron, paper element

Hydraulic hammer (optional) return : 10 micron reinforced micro form element

Cooling : Cooling via a full return line air blast cooler to meet the tough Indian working condition

SWING SYSTEM

Swing motor : Axial piston type.

Swing brake : Hydraulic braking plus automatic spring applied disc type parking brake.

Final drive : Planetary reduction.

Swing gear : Large diameter, internally toothed, fully sealed grease bath lubricated.

Swing lock : Multi position hydraulic.

UNDERCARRIAGE

Construction : Fully welded, "X" frame type with sloping side members with dirt relief holes under top rollers.

Upper & lower rollers : Heat treated, sealed and lubricated.

Track Type : Sealed and greased

Track adjustment : Grease cylinder type.

Track idler : Sealed and lubricated, with spring enhanced recoil.

Track Shoe : 450mm tripler grouser - Standard

Rollers and Shoes

(each side)

Upper rollers : 1

Lower rollers : 5

Track shoes : 39

WEIGHT AND GROUND BEARING PRESSURE

Machine equipped with 3.7m boom & 1.74m Dipper Arm and Excavating Bucket, Operator, full fuel tank and lubes.

| Standard Boom Track Shoes with Dozer | Operating Weight | Bearing Pressure |
|--------------------------------------|------------------|------------------|
| 450mm | 8100 kg | 0.35 kg/sq.cm |
| 600mm (optional) | 8300 kg | 0.27 kg/sq.cm |

| Standard Boom track Shoes Without Dozer | Operating Weight | Bearing Pressure |
|---|------------------|------------------|
| 450mm | 7675 kg | 0.34 kg/sq.cm |
| 600mm (Optional) | 7875 kg | 0.27 kg/sq.cm |

STANDARD / OPTIONAL EQUIPMENT

| | |
|---------------------------------------|-----|
| Double element air cleaner | STD |
| Heavy duty alternator | STD |
| Heavy duty batteries | STD |
| Interior light | STD |
| Removable floor mat | STD |
| 1.74m dipper arm | STD |
| Plexus hydraulic oil filtration | STD |
| HSP pressure test points | STD |
| Auxiliary pipe work mounting brackets | STD |
| Work light on boom (l) & Tool box | STD |
| Suspension seat | STD |
| Dozer blade | STD |
| Upper structure under covers | STD |
| Tool kit | STD |
| 450mm triple grouser | STD |
| 600mm triple grouser | OPT |
| Undercarriage belly guarding | OPT |
| Ripper tooth | OPT |
| General purpose buckets | OPT |
| Ditch cleaning bucket | OPT |
| Hydraulic hammer | OPT |
| Hammer pipework | OPT |
| Without Dozer (Backfill) blade | OPT |
| Short boom (2.8m) & short arm (1.2m) | OPT |
| Cold Start Kit | OPT |
| First aid Kit | OPT |
| Fire extinguisher | OPT |
| Reflectors | OPT |
| Refuel pump | OPT |

TRACK DRIVE

Japanese Hydraulic Components

Type : Fully hydrostatic 2 speed

Travel motors : Axial piston type, fully guarded within undercarriage frame.

Final Drive : Planetary reduction, bolt-on sprockets

Service brake : Hydraulic counter-balance valve to prevent over-speeding on gradients.

Park brake : Disc type, spring applied, automatic hydraulically released.

Gradeability : 70% (35 deg.) continuous

Travel Speeds : High - 5.0 km/hr,
Low - 3.5 km/hr

Tractive effort : 55 kN (5600 kgf)

SERVICE CAPACITIES

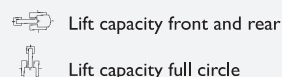
| | |
|----------------------------------|--------|
| Fuel tank | 164 lt |
| Engine coolant | 23 lt |
| Engine oil | 14 lt |
| Track reduction gear (each side) | 1.7 lt |
| Hydraulic system | 92 lt |
| Hydraulic tank | 55 lt |

* All dimensions, weights and timings are variable within 1.5% JCB reserves the right to change specifications without prior notice.





| Reach | 2m | | 3m | | 4m | | 5m | |
|--|-------|-------|-------|-------|-------|-------|-------|-------|
| Load Point Height | | | | | | | | |
| Mono Boom, 1.74m Arm, 450mm triple grouser, bucket weight | | | | | | | | |
| Load Point Height | | | | | | | | |
| 5m | | | 1365* | 1365* | | | | |
| 4m | | | 1446* | 1445* | 1418* | 1418* | | |
| 3m | 2366* | 2366* | 1786* | 1786* | 1546* | 1546* | 1395* | 1094 |
| 2m | | | 2270* | 2270* | 1761* | 1526 | 1374 | 1074 |
| 1m | | | 2686* | 2251* | 1900 | 1466 | 1345 | 1047 |
| 0 | | | 2877* | 2180 | 1854 | 1423 | 1323 | 1026 |
| -1m | 4104* | 4104* | 2838* | 2157 | 1834 | 1404 | | |
| -2m | 3600* | 3600* | 2553* | 2172 | 1816* | 1419 | | |
| -3m | | | 1742* | 1742* | | | | |
| Mono Boom, 1.74m Arm, 600mm triple grouser | | | | | | | | |
| Load Point Height | | | | | | | | |
| 5m | | | 1339* | 1339* | 1316* | 1316* | | |
| 4m | | | 1447* | 1447* | 1398* | 1398* | | |
| 3m | | | 1803* | 1803* | 1539* | 1539* | 1437 | 1131 |
| 2m | | | 2294* | 2294* | 1760* | 1567 | 1412 | 1180 |
| 1m | | | 2701* | 2306 | 1947 | 1507 | 1382 | 1079 |
| 0 | | | 2876* | 2239 | 1901 | 1464 | 1359 | 1058 |
| -1m | 4062* | 4062* | 2831* | 2218 | 1881 | 1445 | | |
| -2m | 3582* | 3582* | 2559* | 2232 | 1852* | 1457 | | |
| -3m | 2673* | 2673* | 1848* | 1848* | | | | |
| Mono Boom, 2.18m Arm, 450mm triple grouser | | | | | | | | |
| Load Point Height | | | | | | | | |
| 5m | | | | | 1217* | 1217* | | |
| 4m | | | 1170* | 1170* | 1211* | 1211* | 1280* | 1114 |
| 3m | | | 1506* | 1506* | 1326* | 1362* | 1299* | 1102* |
| 2m | | | 2006* | 2006* | 1599* | 1531 | 1372 | 1072 |
| 1m | | | 2491* | 2267* | 1845* | 1463 | 1336 | 1037 |
| 0 | | | 2784* | 2173 | 1840 | 1409 | 1305 | 1008 |
| -1m | 3945* | 3945* | 2849* | 2130 | 1808 | 1379 | 1290 | 993 |
| -2m | 3904* | 3904* | 2684* | 2127 | 1805 | 1376 | | |
| -3m | 3151* | 3151* | 2184* | 2166* | | | | |
| Mono Boom, 2.18m Arm, 600mm triple grouser | | | | | | | | |
| Load Point Height | | | | | | | | |
| 4m | | | 1170* | 1170* | 1211* | 1211* | 1280* | 1147 |
| 3m | | | 1506* | 1506* | 1362* | 1362* | 1299* | 1136 |
| 2m | | | 2006* | 2006* | 1599* | 1575 | 1402 | 1150 |
| 1m | | | 2491* | 2332 | 1845* | 1507 | 1373 | 1070 |
| 0 | | | 2784* | 2238 | 1891 | 1453 | 1343 | 1041 |
| -1m | 3945* | 3945* | 2849* | 2195 | 1859 | 1423 | 1328 | 1027 |
| -2m | 3904* | 3904* | 2684* | 2192 | 1856 | 1420 | | |
| -3m | 3151* | 3151* | 2184* | 2184* | | | | |



- Notes:
- Lifting capacities are based on ISO 10567, that is: 75% of minimum tipping load or 87% of hydraulic lift capacity, whichever is less. Lifting capacities marked* are based on hydraulic capacity.
 - Lift capacities assume that the machine is on firm, level ground and equipped with an approved lifting point and bucket with dozer blade up.
 - Lift capacities may be limited by local regulations.

*All dimensions, weights and timings are variable within 1.5% JCB reserves the right to change specifications without prior notice.