

# Wheeled Excavator

**A 918**compact  
Litronic®

Operating Weight: 17,600 – 19,500 kg  
Engine Output: 100 kW / 136 HP  
Bucket Capacity: 0.17 – 0.95 m<sup>3</sup>



# LIEBHERR

# Technical Data



## Engine

Rating per ISO 9249	100 kW (136 HP) at 1,800 RPM
Model	Liebherr D 834 according to Stage IIIA/Tier 3
Type	4 cylinder in-line
Bore/Stroke	108/125 mm
Displacement	4.58 l
Engine operation	4-stroke diesel Common Rail turbo-charged and after-cooler reduced emissions
Harmful emissions values	in accordance with 97/68/EG Stage IIIA
Cooling system	water-cooled and integrated motor oil cooler
Air cleaner	dry-type air cleaner with pre-cleaner, main and safety elements
Fuel tank	330 l
Engine idling	sensor controlled
Electrical system	
Voltage	24 V
Batteries	2 x 135 Ah/12 V
Alternator	three phase current 28 V/110 A



## Hydraulic System

Hydraulic pump	Liebherr, variable displacement, swashplate pump
Max. flow	297 l/min.
Max. hydr. pressure	350 bar
Hydraulic pump regulation and control	Liebherr-Synchron-Comfort-system (LSC) with electronic horsepower regulation, pressure cut-off, load sensing and torque controlled swing drive priority
Hydraulic tank capacity	170 l
Hydraulic system capacity	max. 290 l
Filtration	one main return filter with integrated partial micro filtration (5 µm)
Cooling system	compact cooling system comprising cooling unit for water, hydraulic oil and charge air with stepless, thermostatically controlled fan
MODE selection	adjustment of engine and hydraulic performance via a mode pre-selector to match application, e.g. for especially economical and environmentally friendly operation or for maximum digging performance and heavy-duty jobs
Engine speed and performance setting	stepless alignment of engine output and hydraulic power via engine speed



## Hydraulic Controls

Power distribution	via control valve with integrated safety valves, simultaneous and independent operation of travel drive, swing drive and work
Control type	
Attachment and swing	proportional via joystick levers
Travel	electroproportional via foot pedal
Additional functions	via switch and/or electroproportional foot pedals
Option	Liebherr Proportional Control, proportionally acting transmitters on the joysticks for additional hydraulic functions



## Swing Drive

Drive	Liebherr swashplate motor with torque control and integrated brake valve
Transmission	Liebherr compact planetary gear
Swing ring	Liebherr sealed single race ball bearing swing ring, internal teeth
Swing speed	0 – 9.0 RPM stepless
Swing torque	42 kNm
Option	holding brake (pedal controlled positioning brake)



## Operator's Cab

Cab	ROPS safety cab structure (capable of sweeping over) with individual windscreens or featuring a slide-in subpart under the ceiling, work headlights integrated in the ceiling, a door with a side window (can be opened on both sides), large stowing and depositing possibilities, shock-absorbing suspension, sounddamping insulating, tinted laminated safety glass, separate window shades for the sunroof window and windscreen
Operator's seat Standard	air cushioned operator's seat with headrest, lap belt, seat heater, automatic pneumatic weight adjustment, adjustable seat cushion inclination and length and mechanical lumbar vertebrae support
Operator's seat Comfort (option)	in addition to operator's seat standard: lockable horizontal suspension, adjustable suspension stiffness, pneumatic lumbar vertebrae support and passiv seat climatization with active coal
Operator's seat Premium (option)	in addition to operator's seat comfort: active electronic weight adjustment (automatic readjustment with the slightest weight change), pneumatic low frequency suspension and active seat climatization with activ coal and ventilator
Control system	arm consoles, swinging with the seat
Operation and displays	large high resolution colour display with self-explanatory operation via touch screen or turn-push button, video capability, versatile adjusting, control and monitoring facilities, e.g. climate control, implement and tool parameters
Air-conditioning	automatic air-conditioning, recirculated air function, fast de-icing and demisting at the press of a button, air vents can be operated via a menu; recirculated air and fresh air filters can be easily replaced and are accessible from the outside; heating-cooling unit, designed for extreme outside temperatures, sensors for solar radiation, inside and outside temperatures



## Undercarriage

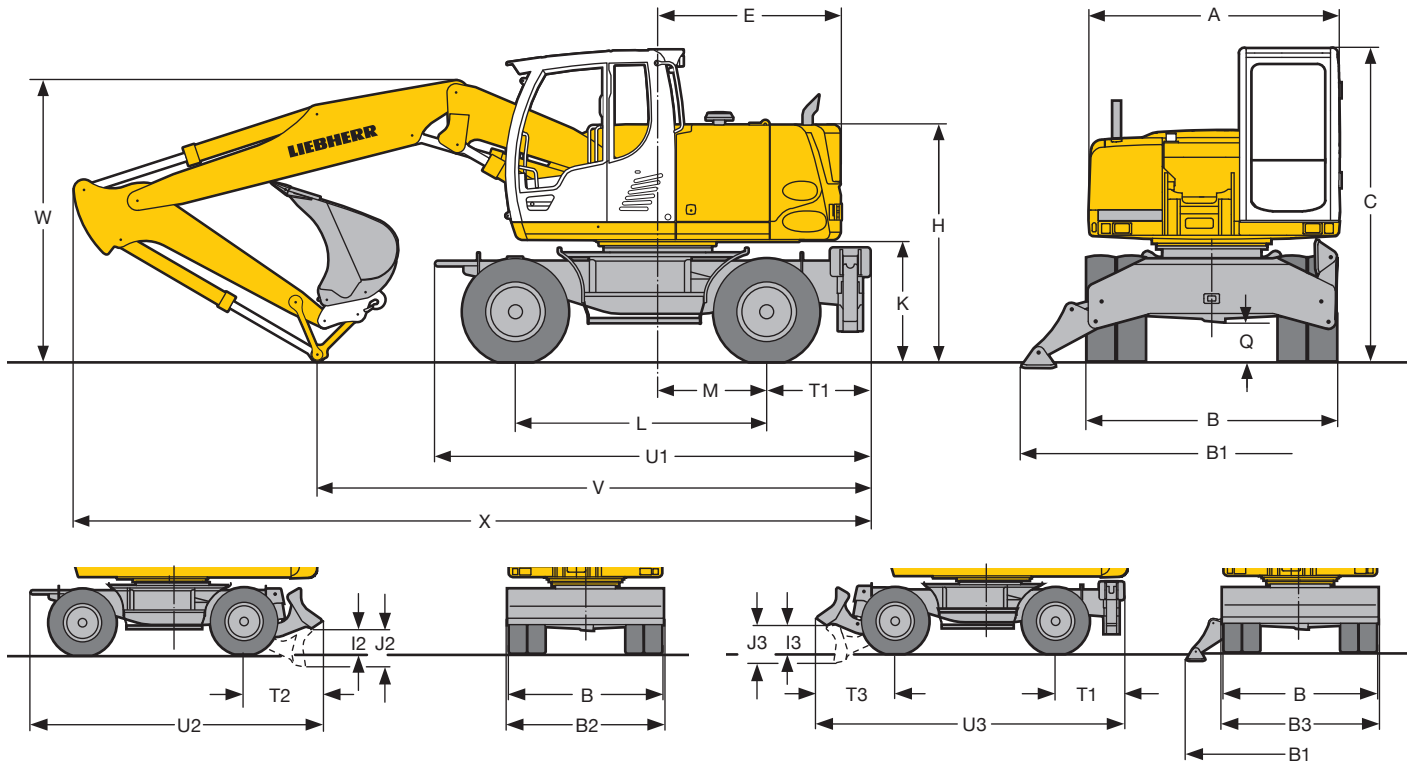
Drive	variable flow swashplate motor with automatic brake valve
Transmission	oversized two speed power shift transmission with additional creeper speed
Travel speed	0 – 1.5 km/h (creeper speed off road) 0 – 5.0 km/h (off road) 0 – 6.0 km/h (creeper speed on road) 0 – 20.0 km/h (road travel) 0 – max. 30.0 km/h Speeder (Option)
Driving operation	automotive driving with accelerator pedal, tempo-mat function: stepless saving of accelerator pedal position, both off- and on-road
Axles	automatic or operator controlled hydraulic front axle oscillation lock
Brakes	steering and rigid axle with wet, maintenance-free multi disc brakes with minimized backlash. Spring applied/pressure released parking brake integrated into gear box
Stabilization	stabilizing blade (adjustable during travel for dozing) 2 point outriggers
Option	stabilizing blade + 2 point outriggers EW (extra wide gauge) undercarriage



## Attachment

Hydraulic cylinders	Liebherr cylinders with special seal system. Shock absorption
Bearings	sealed, low maintenance
Lubrication	Liebherr central lubrication system

# Dimensions



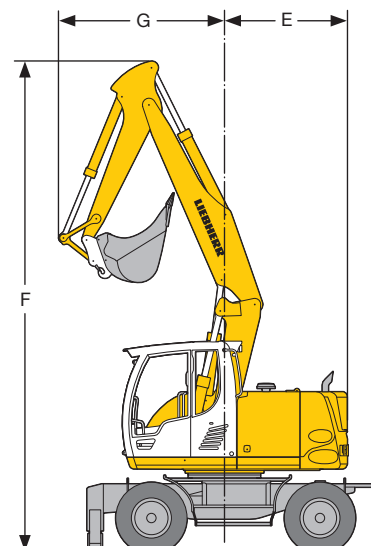
	mm
A	2,550
B	2,550
B*	2,750
B1	3,690
B2	2,550
B2*	2,750
B3	2,550
C	3,165
E	1,850
H	2,395
I2	425
I3	380
J2	605
J3	585
K	1,240
L	2,540
M	1,100
Q	360
T1	1,050
T2	1,225
T3	1,155
U1	4,390
U2	4,575
U3	4,740

\* EW-Undercarriage  
E = Tail radius

Stick	m	Hydr. Adjustable Boom 3.40 m			Adjustable Up/Down Plus Offset Boom 3.60 m		
		stabil. blade	2 pt. outr.	blade + 2 pt. outr.	stabil. blade	2 pt. outr.	blade + 2 pt. outr.
		mm	mm	mm	mm	mm	mm
V	2.25	5,750	5,600	5,600	6,400	6,250	6,250
	2.45	5,550	5,400	5,400	6,050	5,870	5,870
	2.65	5,450	5,300	5,900*	-	-	-
W	2.25	2,950	2,950	2,950	3,150	3,150	3,150
	2.45	3,000	3,000	3,000	3,150	3,150	3,150
	2.65	3,050	3,050	3,050*	-	-	-
X	2.25	8,350	8,150	8,150	8,500	8,300	8,300
	2.45	8,350	8,150	8,150	8,500	8,350	8,350
	2.65	8,350	8,150	8,700*	-	-	-

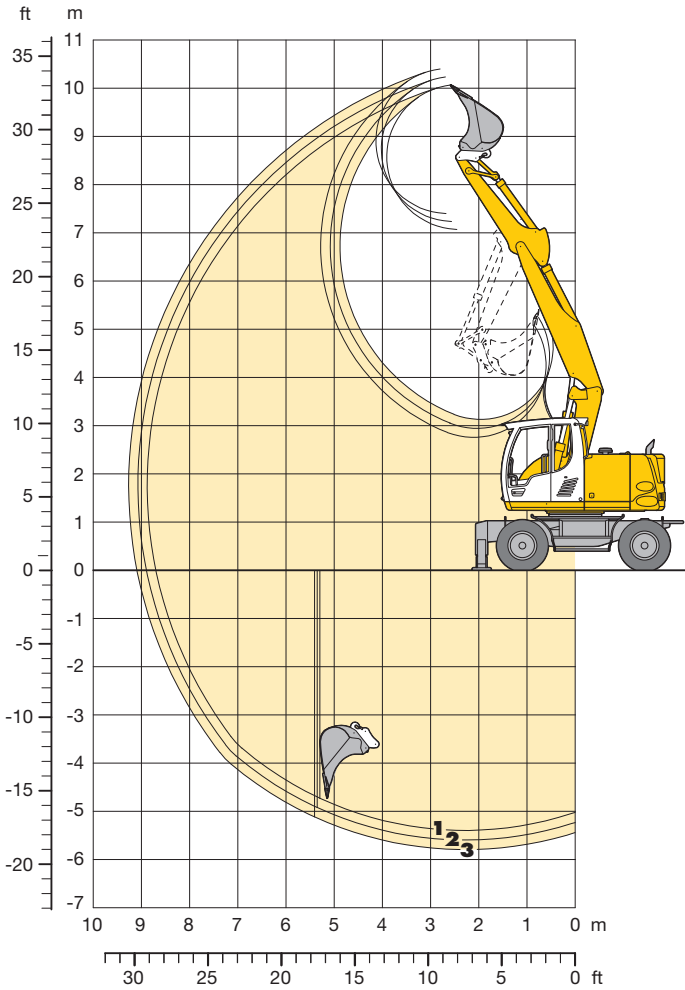
Dimensions are with attachment over steering axle  
\* Attachment over digging axle for shorter transport dimensions

Boom	Stick	F	G	E
	m	mm	mm	mm
hydr. adjustable boom	2.25	7,500	2,500	1,850
hydr. adjustable boom	2.45	7,500	2,500	1,850
hydr. adjustable boom	2.65	7,500	2,550	1,850



# Backhoe Attachment

with Hydr. Adjustable Boom 3.40 m



## Digging Envelope with Quick Change Adapter

		1	2	3
Stick length	m	2.25	2.45	2.65
Max. digging depth	m	5.40	5.60	5.80
Max. reach at ground level	m	8.70	8.90	9.10
Max. dumping height	m	7.10	7.25	7.40
Max. teeth height	m	10.05	10.25	10.40
Min. attachment radius	m	2.50	2.50	2.55

## Digging Forces without Quick Change Adapter

		1	2	3
Max. digging force (ISO 6015)	kN	81.0	76.0	71.6
	t	8.3	7.7	7.3
Max. breakout force (ISO 6015)	kN	98.4	98.4	98.4
	t	10.0	10.0	10.0

Max. breakout force with ripper bucket 125.7 kN (12.8 t)  
 Max. possible digging force (stick 1.70 m) 99.4 kN (10.1 t)

## Operating Weight

The operating weight includes the basic machine with 8 tires plus spacer rings, hydr. adjustable boom 3.40 m, stick 2.25 m, quick change adapter 33 and bucket 850 mm/0.60 m<sup>3</sup>.

Undercarriage versions	Weight
A 918 Compact Litronic <sup>®</sup> with stabilizer blade	17,600 kg
A 918 Compact Litronic <sup>®</sup> with 2 pt. outriggers	17,900 kg
A 918 Compact Litronic <sup>®</sup> with stabilizer blade + 2 pt. outr.	18,700 kg

## Buckets Machine stability per ISO 10567\* (75% of tipping capacity)

Cutting width mm	Capacity ISO 7451 <sup>1)</sup> m <sup>3</sup>	Weight kg	Stabilizers raised			Stabilizer blade down			2 point outriggers down			Stabilizer blade + 2 pt. outriggers down						
			Stick length (m)			Stick length (m)			Stick length (m)			Stick length (m)						
			2.25	2.45	2.65	2.25	2.45	2.65	2.25	2.45	2.65	2.25	2.45	2.65				
300 <sup>2)</sup>	0.17	270	□	□	□	□	□	□	□	□	□	□	□	□	□	□	□	□
400 <sup>2)</sup>	0.24	290	□	□	□	□	□	□	□	□	□	□	□	□	□	□	□	□
500 <sup>2)</sup>	0.32	290	□	□	□	□	□	□	□	□	□	□	□	□	□	□	□	□
650 <sup>2)</sup>	0.45	400	□	□	□	□	□	□	□	□	□	□	□	□	□	□	□	□
850 <sup>2)</sup>	0.60	430	□	□	□	□	□	□	□	□	□	□	□	□	□	□	□	□
1,050 <sup>2)</sup>	0.80	510	△	△	△	□	□	□	□	□	□	□	□	□	□	□	□	□
1,250 <sup>2)</sup>	0.95	560	■	■	■	△	△	△	△	△	△	□	△	△	△	△	△	△
300 <sup>3)</sup>	0.18	260	□	□	□	□	□	□	□	□	□	□	□	□	□	□	□	□
400 <sup>3)</sup>	0.26	280	□	□	□	□	□	□	□	□	□	□	□	□	□	□	□	□
500 <sup>3)</sup>	0.34	280	□	□	□	□	□	□	□	□	□	□	□	□	□	□	□	□
650 <sup>3)</sup>	0.45	380	□	□	□	□	□	□	□	□	□	□	□	□	□	□	□	□
850 <sup>3)</sup>	0.65	410	□	□	□	□	□	□	□	□	□	□	□	□	□	□	□	□
1,050 <sup>3)</sup>	0.85	490	△	△	■	□	□	△	□	□	△	□	□	△	□	□	△	△
1,250 <sup>3)</sup>	1.05	530	■	■	▲	△	△	■	□	△	■	□	△	■	□	△	■	■

\* Indicated loads are based on ISO 10567 and do not exceed 75% of tipping or 87% of hydraulic capacity, max. stick length without quick change adapter, lifted 360° on firm with blocked oscillating axle

<sup>1)</sup> comparable with SAE (heaped)

<sup>2)</sup> Bucket with teeth (also available in HD version) <sup>3)</sup> Bucket with cutting lip (also available in HD version)

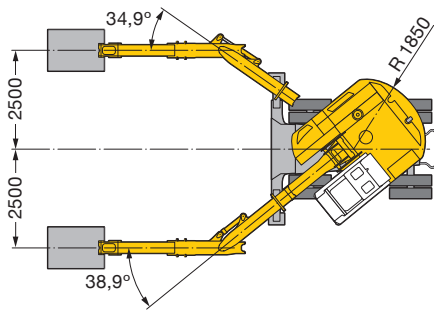
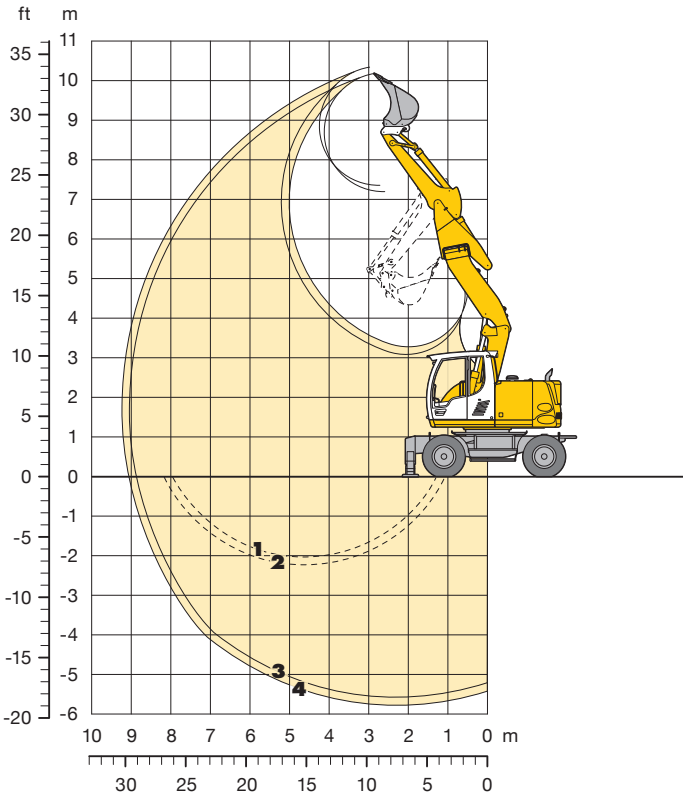
Buckets up to 400 mm cutting width with limited digging depth

Max. material weight □ = ≤ 1.8 t/m<sup>3</sup>, △ = ≤ 1.5 t/m<sup>3</sup>, ■ = ≤ 1.2 t/m<sup>3</sup>, ▲ = not authorized



# Backhoe Attachment

with Adjustable Up/Down Plus Offset Boom 3.60 m



## Digging Envelope with Quick Change Adapter

		3	4
Stick length	m	2.25	2.45
Max. digging depth	m	5.60	5.80
Max. reach at ground level	m	8.85	9.05
Max. dumping height	m	7.20	7.35
Max. teeth height	m	10.20	10.35
Min. attachment radius	m	3.05	2.85

- 1 stick 2.25 m
- 2 stick 2.45 m at max. attachment offset with vertical ditch walls
- 3 stick 2.25 m with set straight boom
- 4 stick 2.45 m with set straight boom

## Digging Forces without Quick Change Adapter

		3	4
Max. digging force (ISO 6015)	kN	81.0	76.0
	t	8.3	7.7
Max. breakout force (ISO 6015)	kN	98.4	98.4
	t	10.0	10.0

Max. breakout force with ripper bucket 125.7 kN (12.8 t)  
 Max. possible digging force (stick 1.70 m) 99.4 kN (10.1 t)

## Operating Weight

The operating weight includes the basic machine with 8 tires plus spacer rings, hydr. adjustable offset boom 3.60 m, stick 2.25 m, quick change adapter 33 and bucket 850 mm/0.60 m<sup>3</sup>.

Undercarriage versions	Weight
A 918 Compact Litronic <sup>®</sup> with stabilizer blade	18,400 kg
A 918 Compact Litronic <sup>®</sup> with 2 pt. outriggers	18,700 kg
A 918 Compact Litronic <sup>®</sup> with stabilizer blade + 2 pt. outr.	19,500 kg

## Buckets Machine stability per ISO 10567\* (75% of tipping capacity)

Cutting width mm	Capacity ISO 7451 <sup>1)</sup> m <sup>3</sup>	Weight kg	Stabilizers raised		Stabilizer blade down		2 point outriggers down		Stabilizer blade + 2 pt. outriggers down	
			Stick length (m)		Stick length (m)		Stick length (m)		Stick length (m)	
			2.25	2.45	2.25	2.45	2.25	2.45	2.25	2.45
400 <sup>2)</sup>	0.24	290	□	□	□	□	□	□	□	□
500 <sup>2)</sup>	0.32	290	□	□	□	□	□	□	□	□
650 <sup>2)</sup>	0.45	400	□	□	□	□	□	□	□	□
850 <sup>2)</sup>	0.60	430	□	□	□	□	□	□	□	□
1,050 <sup>2)</sup>	0.80	510	■	■	△	△	□	□	□	□
1,250 <sup>2)</sup>	0.95	560	▲	▲	■	■	□	△	□	△
400 <sup>3)</sup>	0.26	280	□	□	□	□	□	□	□	□
500 <sup>3)</sup>	0.34	280	□	□	□	□	□	□	□	□
650 <sup>3)</sup>	0.45	380	□	□	□	□	□	□	□	□
850 <sup>3)</sup>	0.65	410	□	△	□	□	□	□	□	□
1,050 <sup>3)</sup>	0.85	490	■	■	△	△	□	□	□	□
1,250 <sup>3)</sup>	1.05	530	▲	▲	■	■	□	△	□	△

\* Indicated loads are based on ISO 10567 and do not exceed 75% of tipping or 87% of hydraulic capacity, max. stick length without quick change adapter, lifted 360° on firm with blocked oscillating axle

1) comparable with SAE (heaped)

2) Bucket with teeth (also available in HD version) 3) Bucket with cutting lip (also available in HD version)

Buckets up to 400 mm cutting width with limited digging depth

Max. material weight □ = ≤ 1.8 t/m<sup>3</sup>, △ = ≤ 1.5 t/m<sup>3</sup>, ■ = ≤ 1.2 t/m<sup>3</sup>, ▲ = not authorized

# Lift Capacities




with Adjustable Up/Down Plus Offset Boom 3.60 m

## Stick 2.25 m

m	Undercarriage	3.0 m		4.5 m		6.0 m		7.5 m		m
		Can be slewed through 360°	In longitudinal position of undercarriage	Can be slewed through 360°	In longitudinal position of undercarriage	Can be slewed through 360°	In longitudinal position of undercarriage	Can be slewed through 360°	In longitudinal position of undercarriage	
7.5	Stabilizers raised			3.6*	3.6*			2.4*	2.4*	5.06
	Stabilizer blade down			3.6*	3.6*			2.4*	2.4*	
	2 pt. outriggers down			3.6*	3.6*			2.4*	2.4*	
6.0	Blade + 2 pt. down			3.6*	3.6*			2.4*	2.4*	6.42
	Stabilizers raised			4.5*	4.8*	2.7	3.4*	2.1*	2.1*	
	Stabilizer blade down			4.8*	4.8*	3.0	3.4*	2.1*	2.1*	
4.5	2 pt. outriggers down			4.8*	4.8*	3.4*	3.4*	2.1*	2.1*	7.21
	Blade + 2 pt. down	7.2*	7.2*	4.3	5.4*	2.7	4.3	1.8	2.1*	
	Stabilizers raised	7.2*	7.2*	4.7	5.4*	3.0	4.5*	2.0	2.1*	
3.0	Stabilizer blade down	7.2*	7.2*	5.4*	5.4*	3.7	4.5*	2.1*	2.1*	7.62
	2 pt. outriggers down	7.2*	7.2*	5.4*	5.4*	4.5	4.5*	2.1*	2.1*	
	Blade + 2 pt. down	7.3	9.9*	4.2	6.3*	2.7*	4.2	1.6	2.8*	
1.5	Stabilizers raised	9.8	9.9*	5.5	6.3*	3.7	4.8*	2.4	2.8*	7.72
	Stabilizer blade down	9.9*	9.9*	6.3*	6.3*	4.4	4.8*	2.8*	2.8*	
	2 pt. outriggers down	7.1	10.1*	4.1	6.2*	2.6	4.2	1.6	2.7	
0	Blade + 2 pt. down	7.8	10.1*	4.5	6.9*	2.9	5.1*	1.8	2.8*	7.52
	Stabilizers raised	9.6	10.1*	5.4	6.9*	3.6	5.1*	2.3	3.6*	
	Stabilizer blade down	10.1*	10.1*	6.4*	6.9*	4.4*	5.1*	2.9	3.6*	
-1.5	2 pt. outriggers down	7.1	10.9*	3.9	6.3*	2.4	4.0	1.5	2.7	6.98
	Blade + 2 pt. down	7.8	10.9*	4.4	7.0*	2.7	5.1*	1.7	2.8*	
	Stabilizers raised	9.7	10.9*	5.4*	7.0*	3.4	5.1*	2.2	2.8*	
-3.0	Stabilizer blade down	10.9*	10.9*	6.5	7.0*	4.2	5.1*	2.8*	2.8*	6.03
	2 pt. outriggers down	6.6	11.3*	3.6	6.3	2.1	3.8	1.6	2.9	
	Blade + 2 pt. down	7.5	11.3*	4.1	7.2*	2.4	5.2*	1.8	3.3*	
-4.5	Stabilizers raised	10.0	11.3*	5.2	7.2*	3.2	5.2*	2.4	3.3*	6.03
	Stabilizer blade down	11.3*	11.3*	6.7	7.2*	4.0	5.2*	3.1	3.3*	
	2 pt. outriggers down	6.4	11.7*	3.3	5.9	2.0	3.3*	2.0	3.2*	
-4.5	Blade + 2 pt. down	7.3	11.7*	3.7	6.8*	2.3	3.3*	2.3	3.2*	6.03
	Stabilizers raised	9.8	11.7*	4.8	6.8*	3.0	3.3*	3.0	3.2*	
	Stabilizer blade down	11.7*	11.7*	6.3	6.8*	3.3*	3.3*	3.2*	3.2*	

## Stick 2.45 m

m	Undercarriage	3.0 m		4.5 m		6.0 m		7.5 m		m
		Can be slewed through 360°	In longitudinal position of undercarriage	Can be slewed through 360°	In longitudinal position of undercarriage	Can be slewed through 360°	In longitudinal position of undercarriage	Can be slewed through 360°	In longitudinal position of undercarriage	
7.5	Stabilizers raised			3.7*	3.7*			2.1*	2.1*	5.36
	Stabilizer blade down			3.7*	3.7*			2.1*	2.1*	
	2 pt. outriggers down			3.7*	3.7*			2.1*	2.1*	
6.0	Blade + 2 pt. down			3.7*	3.7*			2.1*	2.1*	6.65
	Stabilizers raised			4.5*	4.5*	2.7	3.5*	1.9*	1.9*	
	Stabilizer blade down			4.5*	4.5*	3.0	3.5*	1.9*	1.9*	
4.5	2 pt. outriggers down			4.5*	4.5*	3.5*	3.5*	1.9*	1.9*	7.42
	Blade + 2 pt. down	5.9*	5.9*	4.3	5.3*	2.8	4.3	1.7	1.9*	
	Stabilizers raised	5.9*	5.9*	4.7	5.3*	3.1	4.4*	1.9*	1.9*	
3.0	Stabilizer blade down	5.9*	5.9*	5.3*	5.3*	3.7	4.4*	1.9*	1.9*	7.82
	2 pt. outriggers down	5.9*	5.9*	5.3*	5.3*	4.4*	4.4*	1.9*	1.9*	
	Blade + 2 pt. down	7.3	9.5*	4.2	6.1*	2.7	4.2*	1.7	2.8	
1.5	Stabilizers raised	8.1	9.5*	4.5	6.1*	3.0	4.7*	1.9	3.3*	7.92
	Stabilizer blade down	9.5*	9.5*	5.4*	6.1*	3.7	4.7*	2.4	3.3*	
	2 pt. outriggers down	9.5*	9.5*	6.1*	6.1*	4.4	4.7*	3.0	3.3*	
0	Blade + 2 pt. down	7.1*	10.0*	4.1	6.2	2.6	4.2	1.6	2.8	7.72
	Stabilizers raised	7.8*	10.0*	4.4	6.8*	3.6	5.0*	2.3	4.0*	
	Stabilizer blade down	9.5*	10.0*	5.3	6.8*	4.4	5.0*	2.1	2.1*	
-1.5	2 pt. outriggers down	10.0*	10.0*	6.4	6.8*	4.4	5.0*	2.9	4.0*	7.20
	Blade + 2 pt. down	7.1*	10.8*	4.0	6.2	2.4	4.0	1.5	2.7	
	Stabilizers raised	7.9	10.8*	4.4	7.0*	2.7	5.1*	1.7	3.8*	
-3.0	Stabilizer blade down	9.7	10.8*	5.4*	7.0*	3.4	5.1*	2.2	3.8*	6.28
	2 pt. outriggers down	10.8*	10.8*	6.4	7.0*	4.3	5.1*	2.8	3.8*	
	Blade + 2 pt. down	6.6	11.2*	3.7	6.4	2.2	3.8	1.5	2.8	
-4.5	Stabilizers raised	7.5	11.2*	4.1	7.1*	2.4	5.2*	1.7	2.9*	6.28
	Stabilizer blade down	10.0	11.2*	5.3	7.1*	3.2	5.2*	2.3	2.9*	
	2 pt. outriggers down	11.2*	11.2*	6.7	7.1*	4.1	5.2*	2.9*	2.9*	
-4.5	Blade + 2 pt. down	6.5	11.8*	3.3	5.9	2.0	3.7	1.9	3.2*	3.35
	Stabilizers raised	7.4	11.8*	3.7	7.1*	2.3	3.9*	2.1	3.2*	
	Stabilizer blade down	9.9	11.8*	4.9	7.1*	3.0	3.9*	2.8	3.2*	
-4.5	2 pt. outriggers down	11.8*	11.8*	6.3	7.1*	3.9*	3.9*	3.2*	3.2*	3.35
	Blade + 2 pt. down	6.1	7.2*					5.1	6.0*	
	Stabilizers raised	7.0	7.2*					5.8	6.0*	
-4.5	Stabilizer blade down	7.2*	7.2*					6.0*	6.0*	3.35
	2 pt. outriggers down	7.2*	7.2*					6.0*	6.0*	
	Blade + 2 pt. down	7.2*	7.2*					6.0*	6.0*	

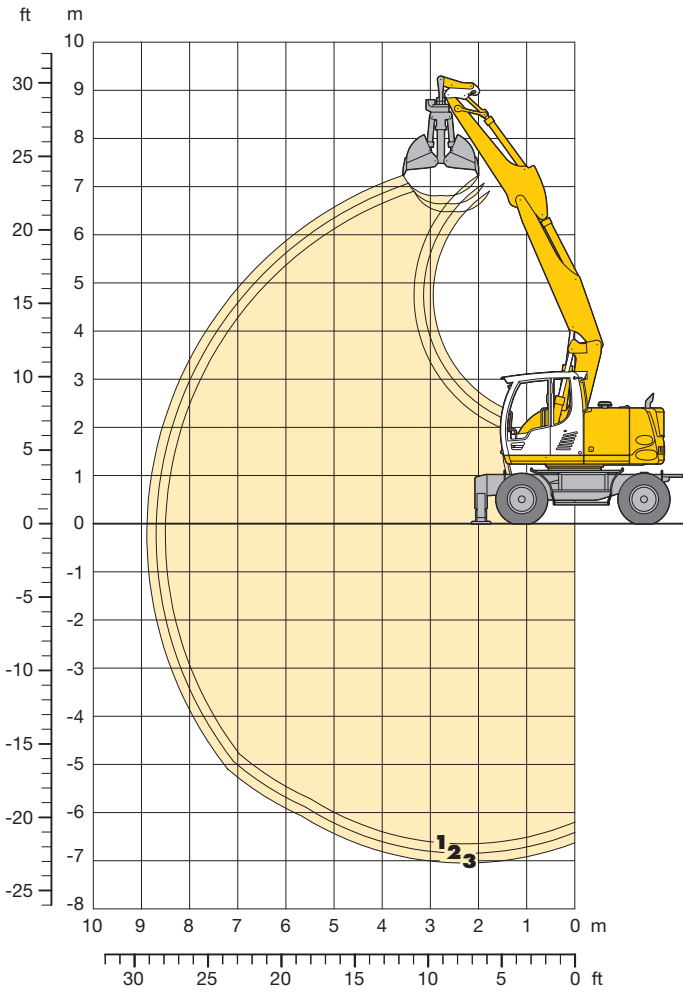
 Height
  Can be slewed through 360°
  In longitudinal position of undercarriage
  Max. reach
 \* Limited by hydr. capacity

The lift capacities on the load hook of the Liebherr quick-change adapter 33 without grab attachment are stated in metric tons (t) and are valid on a firm, level supporting surface with blocked oscillating axle. These capacities can be slewed through 360° with the undercarriage in the transverse position. Capacities in the longitudinal position of the undercarriage (+/- 15°) are specified over the steering axle with the stabilizers raised and over the rigid axle with the stabilizers down. The values apply when the adjusting cylinder is in the optimal position. Indicated loads comply with the ISO 10567 standard and do not exceed 75 % of tipping or 87 % of hydraulic capacity, or are limited by the permissible load of the load hook on the quick-change adapter (max. 5 t). Without the quick-change adapter, lift capacities will increase by up to 110 kg.

In accordance with the harmonised EU Standard EN 474-5, hydraulic excavators used for lifting operations must be equipped with pipe rupture protection devices on the hoist cylinders and an overload warning device.

# Clamshell Attachment

with Hydr. Adjustable Boom 3.40 m



## Digging Envelope with Quick Change Adapter

		1	2	3
Stick length	m	2.25	2.45	2.65
Max. digging depth	m	5.40	5.60	5.80
Max. reach at ground level	m	8.70	8.90	9.10
Max. dumping height	m	7.10	7.25	7.40

## Clamshell Model

**8 B**

Max. tooth force	52 kN (5.3 t)
Max. torque of hydr. swivel	1.40 kNm

## Operating Weight

The operating weight includes the basic machine with 8 tires plus spacer rings, hydr. adjustable boom 3.40 m, stick 2.25 m, quick change adapter 33 and clamshell model 8 B/0.40 m<sup>3</sup> (800 mm without ejector).

Undercarriage versions	Weight
A 918 Compact Litronic <sup>®</sup> with stabilizer blade	18,000 kg
A 918 Compact Litronic <sup>®</sup> with 2 pt. outriggers	18,300 kg
A 918 Compact Litronic <sup>®</sup> with stabilizer blade + 2 pt. outr.	19,100 kg

## Clamshell Model 8 B Machine stability per ISO 10567\* (75% of tipping capacity)

Width of shells mm	Capacity m <sup>3</sup>	Weight kg	Stabilizers raised			Stabilizer blade down			2 point outriggers down			Stabilizer blade + 2 pt. outriggers down		
			Stick length (m)			Stick length (m)			Stick length (m)			Stick length (m)		
			2.25	2.45	2.65	2.25	2.45	2.65	2.25	2.45	2.65	2.25	2.45	2.65
320 <sup>1)</sup>	0.17	710	□	□	□	□	□	□	□	□	□	□	□	□
400 <sup>1)</sup>	0.22	750	□	□	□	□	□	□	□	□	□	□	□	□
600 <sup>1)</sup>	0.30	750	□	□	□	□	□	□	□	□	□	□	□	□
800 <sup>1)</sup>	0.40	800	□	□	□	□	□	□	□	□	□	□	□	□
1,000 <sup>1)</sup>	0.80	900	■	■	▲	△	△	■	□	△	■	□	△	■
320 <sup>2)</sup>	0.17	760	□	□	□	□	□	□	□	□	□	□	□	□
400 <sup>2)</sup>	0.22	810	□	□	□	□	□	□	□	□	□	□	□	□
600 <sup>2)</sup>	0.30	830	□	□	□	□	□	□	□	□	□	□	□	□
800 <sup>2)</sup>	0.40	890	□	□	□	□	□	□	□	□	□	□	□	□

\* Indicated loads are based on ISO 10567 and do not exceed 75% of tipping or 87% of hydraulic capacity, max. stick length without quick change adapter, lifted 360° on firm with blocked oscillating axle

1) without ejector

2) with ejector

□ = ≤ 1.8 t/m<sup>3</sup> max. material weight

△ = ≤ 1.5 t/m<sup>3</sup> max. material weight

■ = ≤ 1.2 t/m<sup>3</sup> max. material weight

▲ = not authorized



# Equipment



## Undercarriage

2-circuit brake system	•
Support individually controllable	+
Tires Mitas EM 22	•
Wide gauge 2.75 m	+
Travel speed levels (four)	•
Piston rod protection support cylinders	+
Powershift transmission	•
Parking brake, maintenance-free	•
Tire variants, various	+
Pipe fracture safety on support cylinders	•
Custom paintwork undercarriage	+
Speeder*	+
Tool box left	•
Tool box right	+
Central lubrication undercarriage	+



## Uppercarriage

Refueling pump, electrical	+
Main battery switch for electrical system	•
Engine hood with gas spring	•
Uppercarriage doors, lockable	•
Beacon on counterweight	+
Custom paintwork uppercarriage	+
Central lubricating system, automatic**	•



## Hydraulics

Stop cock between hydraulic tank and pump(s)	•
Pressure test fittings	•
Accumulator for controlled lowering of the attachment with the engine shut down	•
Hydraulic oil from -20 °C to +40 °C	•
Hydraulic oil filter with integrated microfilter	•
Hydraulic oil pre-heating 230 V	+
Liebherr hydraulic oil, biologically degradable	+
Liebherr hydraulic oil, specially for warm and cold regions	+
Bypass filter	+
Change-over for controls (hammer/shear operation via pedals or joystick)	+



## Engine

Fuel theft protection	+
Fuel preheating	+
Liebherr particle filter	+
Air pre-cleaner	+



## Operator's Cab

Storage bin	•
Mechanical hour meters, readable from outside the cab	•
Sunroof, right window and windshield with safety glass	•
Travel alarm	+
Fire extinguisher	+
Completely retractable windscreen	•
Front windscreen (bottom) retractable	•
Rubber floor mat	•
Dome light	•
Coat hook	•
Automatic air conditioning**	•
Fuel consumption indicator	•

Electric cool box	+
Steering column adjustable horizontally	•
LIDAT Standard (Liebherr data transfer system)***	•
LIDAT Plus (extended Liebherr data transfer system)***	•
Automatic engine shut-down (time adjustable)	+
7" colour multifunction display with touchscreen	•
Emergency exit rear window	•
Preparation for radio installation	•
Radio controllable over menu	+
Rain hood over front window opening	•
Back-up alarm	+
Rear space monitoring with camera**	•
Beacon	+
Right window made of one piece (without post)	•
All tinted windows	•
Wiper for sunroof	+
Two flood lights under rain hood	•
Xenon headlights	+
Door with sliding window	•
Protective grid up FOPS	+
Protective grid front	+
Side camera	+
Seat belt	•
Seat heater	•
Sun visor	+
Sun roller blind	•
Auxiliary heating with clock timer	+
Storage space	•
Load bearing sectional profile structure, covered with deep-drawn panels	•
Electronic drive away lock	+
Wiper/washer	•
Cigarette lighter and ashtray	•
Additional halogen headlights behind cab	+
Additional halogen headlights front cab	+



## Attachment

Main boom, adjustable in height and laterally	+
Main boom, adjustable in height	+
Function rotating device incl. tubing	+
Function hammer/shear operation incl. tubing	+
Piston rod protection bucket cylinder	+
Piston rod protection stick cylinder	+
Load hook on stick	+
Shackle on stick	+
Leak oil line, additional for attaching tools	+
Liebherr ditchcleaning bucket program	+
Liebherr pallet forks	+
Liebherr quick change adapter, hydraulic or mechanical	+
Liebherr tilting bucket program	+
Liebherr swivel rotator program	+
Liebherr sorting grapple program	+
Liebherr backhoe bucket program	+
Liebherr tooth system	+
Liebherr clamshell grapple program	+
LIKUFIX, coupling hydraulic tools from the cab	+
Gooseneck boom	+
Gooseneck boom, laterally adjustable	+
Pipe fracture safety boom cylinders	•
Pipe fracture safety bucket cylinder	+
Pipe fracture safety stick cylinders	•
Hose quick coupling at end of stick	•
Custom painting for tools	+
Tool-Control, 10 tool adjustments selectable over the display	+
Overload warning device	•
Bottom chord protection for stick	+
Central lubricating system, expanded for connecting link	+
Central lubrication for quick change adapter	+

• = Standard, + = Option

\* = not available in all countries, \*\* = country-dependent, \*\*\* = optionally extendable after one year

**Options and/or special attachments, supplied by vendors other than Liebherr, are only to be installed with the knowledge and approval of Liebherr to retain warranty.**

All illustrations and data may differ from standard equipment. Subject to change without notice.

# The Liebherr Group of Companies

## Wide product range

The Liebherr Group is one of the largest construction equipment manufacturers in the world. Liebherr's high-value products and services enjoy a high reputation in many other fields, too. The wide range includes domestic appliances, aerospace and transportation systems, machine tools and maritime cranes.

## Exceptional customer benefit

Every product line provides a complete range of models in many different versions. With both their technical excellence and acknowledged quality, Liebherr products offer a maximum of customer benefits in practical application.

## State-of-the-art technology

To provide consistent, top quality products, Liebherr attaches great importance to each product area, its components and core technologies. Important modules and components are developed and manufactured in-house, for instance the entire drive and control technology for construction equipment.

## Worldwide and independent

Hans Liebherr founded the Liebherr family company in 1949. Since that time, the enterprise has steadily grown to a group of more than 100 companies with over 32,000 employees located on all continents. The corporate headquarters of the Group is Liebherr-International AG in Bulle, Switzerland. The Liebherr family is the sole owner of the company.

[www.liebherr.com](http://www.liebherr.com)



Printed in Germany by DWS RG-BK-RP LHB/VF 11003827-3-10.10\_enGB

**Liebherr-Hydraulikbagger GmbH**

Liebherrstraße 12, D-88457 Kirchdorf/Iller

☎ +49 7354 80-0, Fax +49 7354 80-7294

[www.liebherr.com](http://www.liebherr.com), E-Mail: [info.lhb@liebherr.com](mailto:info.lhb@liebherr.com)