

Liebherr Reachstacker

LRS 645 LH
Litronic®

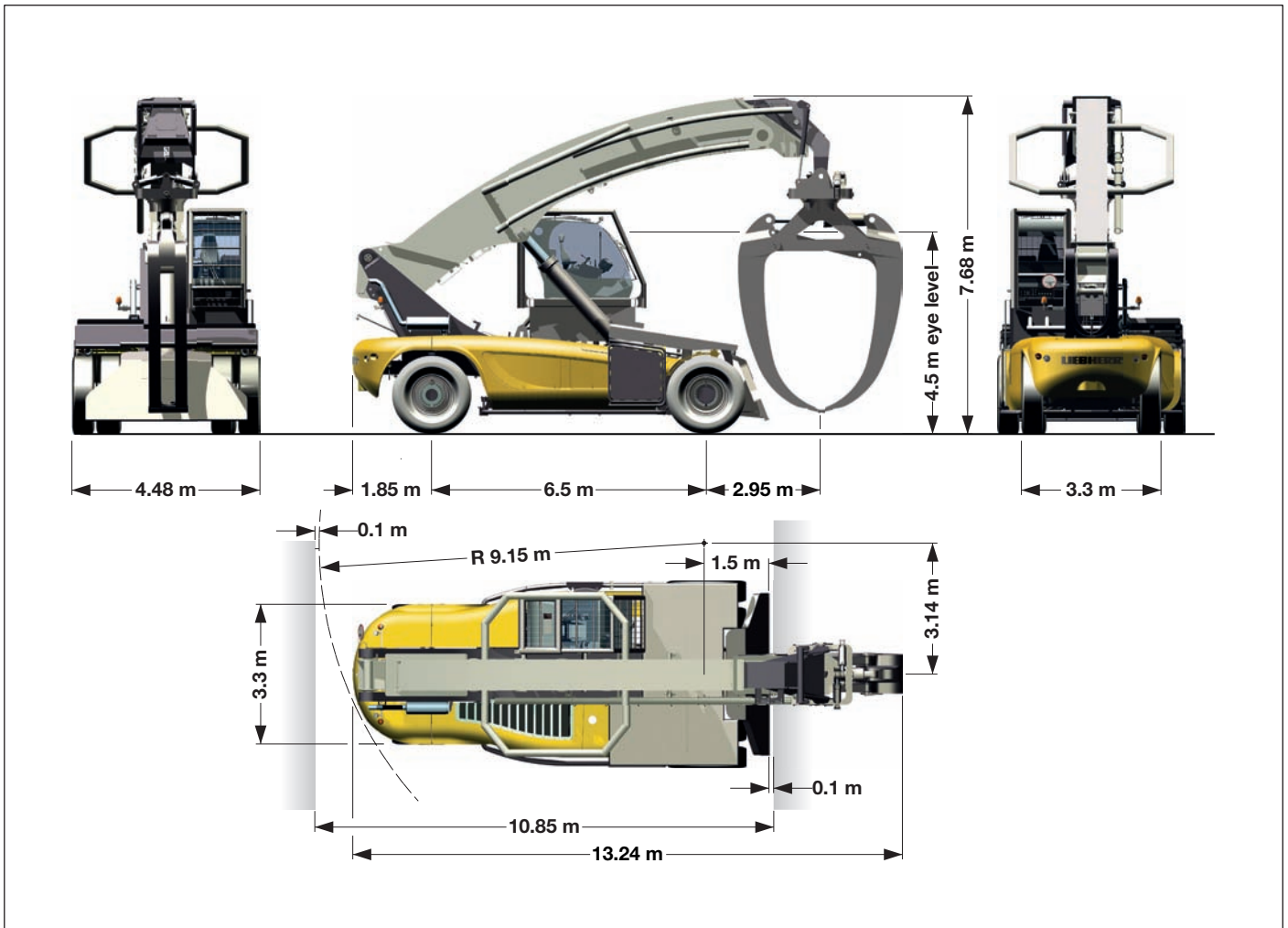
Outstanding capabilities for professional log handling - by Liebherr.



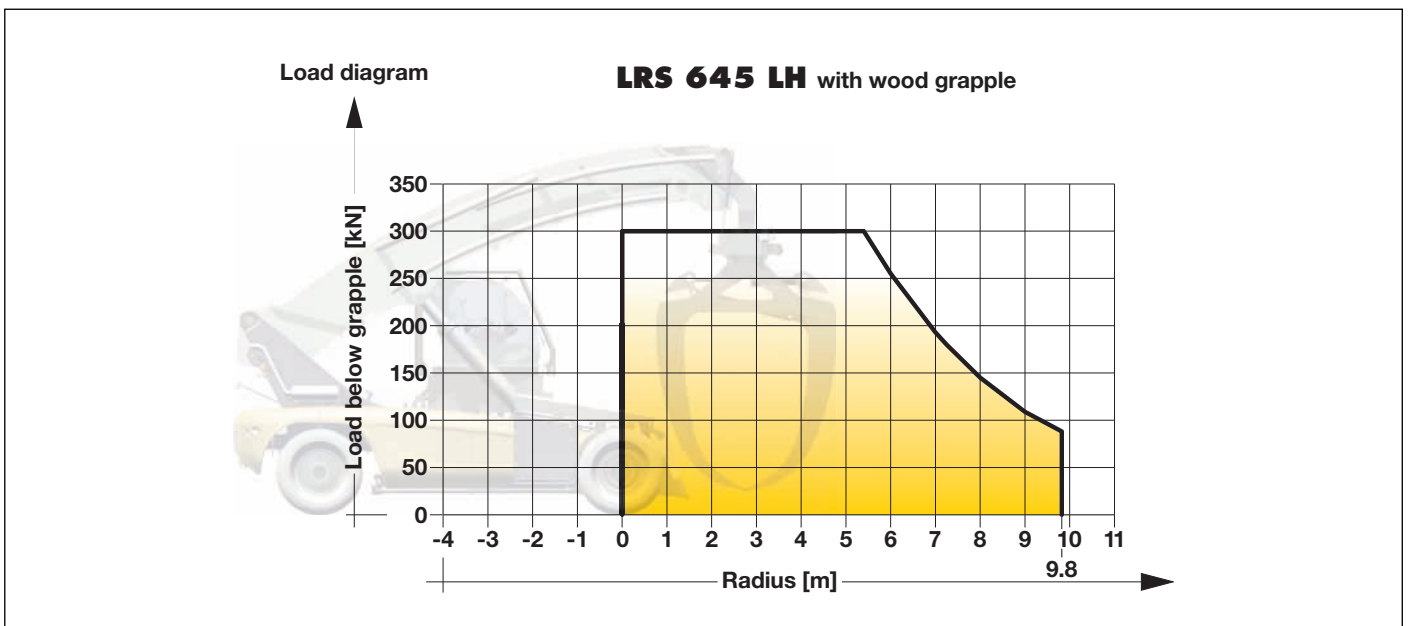
LIEBHERR

Dimensions

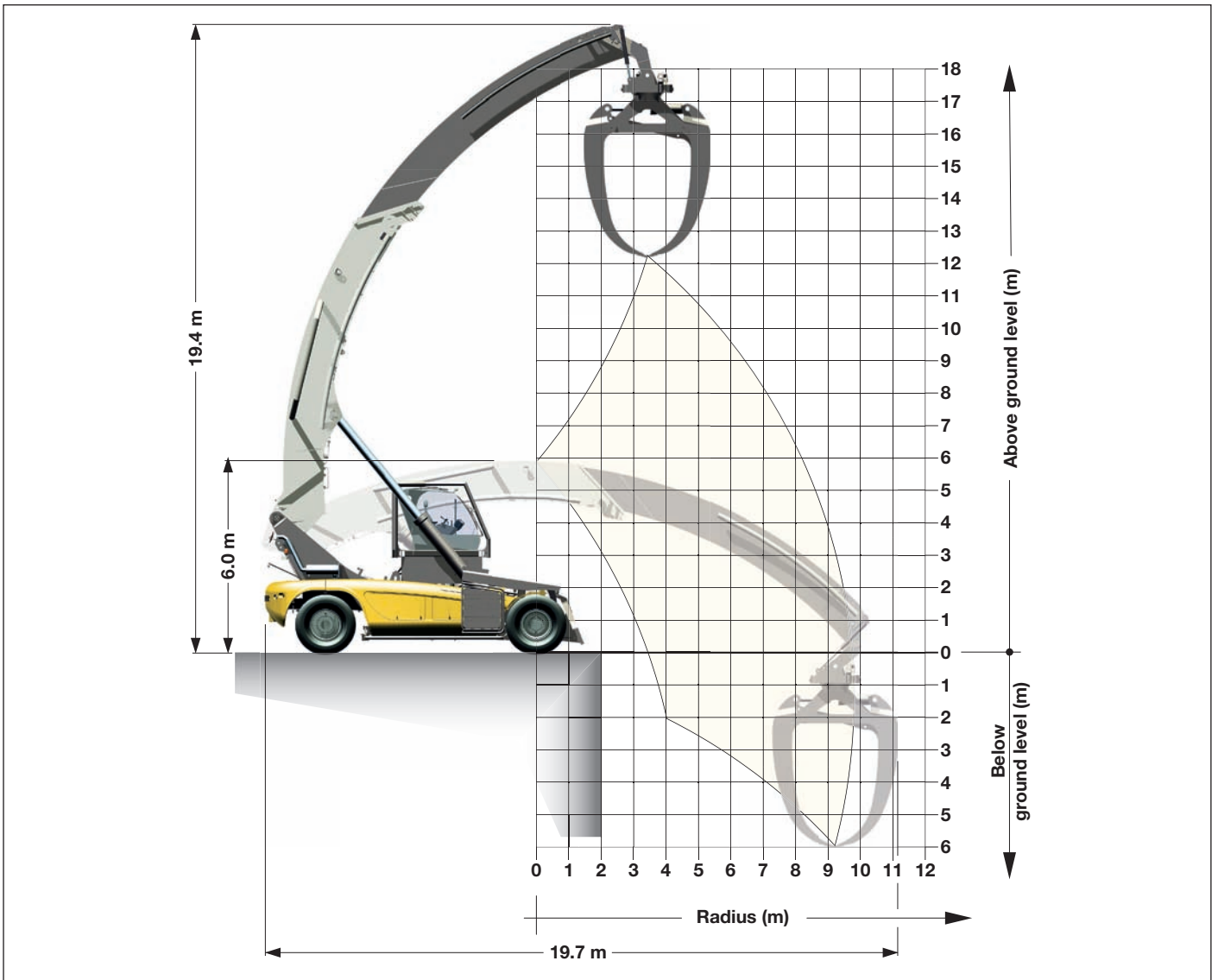
Basic machine



Load diagram



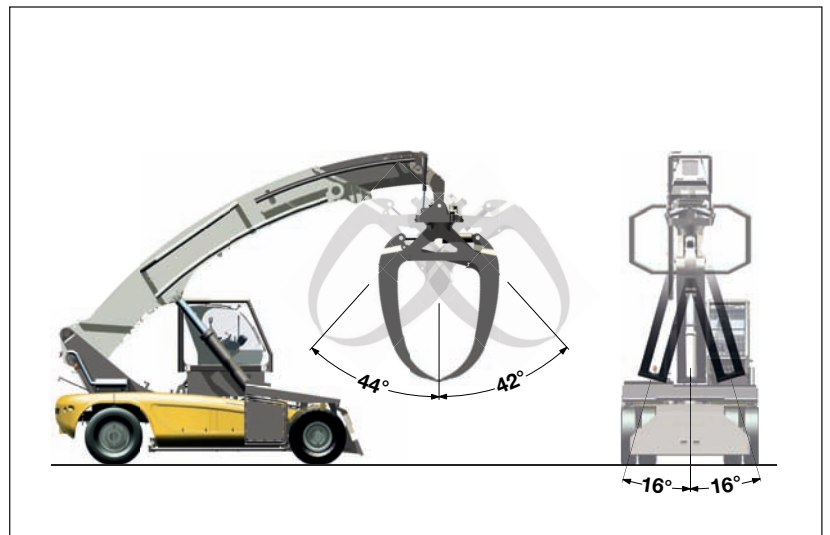
Max. working area



Travelling mode



Max. grapple angle



Technical data

Basic machine

Lifting capacity

Max. lifting capacity	30.0 t
Max. lifting height	12.3 m
Max. outreach from the front edge	8.3 m

Working speeds

Driving speed unloaded	25.0 km/h
Driving speed fully loaded	20.0 km/h
Max. opening time for grapple	8.0 s
Max. closing time for grapple	5.8 s
Max. turning time for grapple (360°)	8.5 s

Chassis

Length overall	13.24 m
Width (front/rear)	4.48/3.30 m
Height	7.68 m
Turning radius	9.15 m
Wheel base	6.50 m
Ground clearance	0.30 m

Wheels

Dimensions	18.00x33/PR40
Number of wheels (front/rear)	4/2
Inflation pressure	10 bar

Engine

Power rating	270 kW (362 HP) at 2000 rpm
Engine type	Liebherr D 936 L
Fuel tank	600 l
Engine complies with NRMM exhaust certification EPA/CARB TIER3 and 97/68 EC Stage III A.	

Grapple

Grapple area	8.2 m ²
Load capacity	30.0 t
Turning angle	360 °

Transmission

Manufacturer	Liebherr
Type	fully hydrostatic
Acceleration/Deceleration	continuous
Operational brake	hydrostatic

Driver's environment

Cabin dimensions	2.5 x 1.3 x 2.0 m
eye level	4.5 m
position	left
Travelling	drive/steer-by-wire (joysticks)
Control system	Litronic®

Weight

Total weight of the machine	approx. 78 t
-----------------------------	--------------

Working range

