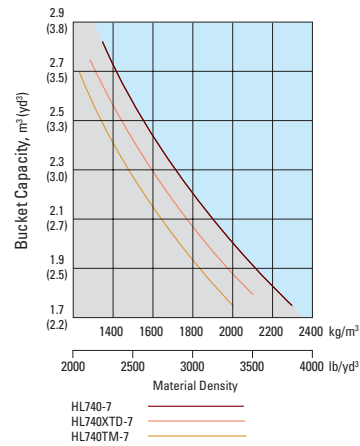


### Bucket Selection Guide



### Supplemental Specifications

Description	Change in operating weight kg(lb)	Change in static tipping load-straight kg(lb)	Change in static tipping load-40° turn kg(lb)
17.5-25 12PR L2	-308 (-679)	-218 (-481)	-192 (-423)
17.5-25 12PR L3	-248 (-547)	-175 (-386)	-155 (-342)
20.5-25 16PR L2	-64 (-141)	-45 (-99)	-40 (-88)
17.5 R25 XHA*	-160 (-353)	-113 (-249)	-100 (-220)
20.5 R25 XHA*	+507 (+1,118)	+358 (+789)	+317 (+699)

### Standard Equipment

- Electrical system**  
Alternator, 70A  
Alarms, audible and visual  
- air filter clogging  
- transmission error  
- alternator voltage  
- brake oil pressure  
- engine oil pressure  
- parking brake  
- fuel level  
- hydraulic oil temperature  
- coolant temperature  
- service brake oil pressure  
Batteries, 850 CCA, 12V, (2)  
Gauges  
- engine coolant temperature  
- fuel level  
- hydraulic oil temperature  
- speedometer  
- transmission oil temperature  
- voltmeter  
Horn, electric  
Indicator lights  
- clutch cut-off  
- high beam  
- turn signal  
- work light  
LCD Display  
- clock and fault code  
- operating hour counter
- engine rpm  
- transmission gear range indicator  
- job time and distance  
- temperature(coolant, hydraulic oil, T/M oil)
- Lighting system**  
- 2 dome lights  
- 2 stop and tail lights  
- 4 turn signals  
- brake lights(counterweight)  
- license plate light  
- head light  
2 on front tower  
- working lights  
2 on front roof  
2 on grill
- Switches**  
- buzzer stop  
- clutch cut-off  
- hazard  
- Ignition key, start/stop switch  
- main light(illumination and head light)
- parking  
- rear wiper & washer  
- work light  
- full automatic transmission  
Starter, electric  
Starting and charging system(24-volt)

- Cab**  
Cab, ROPS/FOPS  
(sound suppressed and pressurized) with:  
- cigar lighter & ashtray  
- coat hook  
- front/rear window defroster  
- intermittent wiper and washer, front and rear  
- personal storage space: holder, can and cup  
- rear view mirrors (2 inside)  
- rear view mirrors (2 outside)  
- seat belt  
- seat, adjustable suspension with armrests  
- tilt / telescopic steering column  
- steering wheel with knob  
- sunvisor (front window)  
- tinted safety glass  
Magazine box  
Pedals  
- one accelerator pedal  
- one brake pedal  
Rubber floor mat  
Wrist rest
- Engine**  
Antifreeze  
Engine, Cummins QSB5.9-C  
- Low Emission Diesel, Tier-II

- Engine enclosure, lockable  
Engine fuel priming pump  
Fan guard  
Fuel/water separator  
Fuel warmer  
Muffler, under hood with large exhaust stack  
Precleaner, engine air intake  
Radiator  
Starting aid (air intake heater)  
Water sensor on fuel filter
- Power Train**  
Brakes : Service, enclosed wet-disc  
Differential, Front : limited Slip  
Rear : conventional  
Parking brake  
Torque converter  
Transmission, computer-controlled, electronic soft shift, auto-shift and quick-shift features included  
Transmission oil cooler
- Hydraulics**  
Boom lock safety valve  
Boom kickout, automatic  
Bucket positioner, automatic  
Diagnostic pressure taps  
Hydraulic system,  
- 2 spool, single lever, pilot control for boom and bucket actuation

- Steering, load-sensing  
Remote cooling fan, hydraulically-driven, temperature sensing type
- Others**  
Articulation locking bar  
Coolant level sight gauge  
Counterweight  
Door and cab locks, one key  
Doors, service access(locking)  
Drawbar with pin  
Engine oil level dipstick gauge  
Ergonomically located and slip resistant, left & right  
- handrails  
- ladders  
- platforms  
- steps  
Fenders(front/rear)  
Guard, bucket cylinder rod  
Hydraulic oil level sight gauge  
License plate bracket  
Lift and tie-down hooks  
Steering stops, cushioned  
Tires(20.5-25, 16PR,L3)  
Transmission oil level dipstick gauge  
Vandalism protection caplocks

### Optional Equipment

- 24-volt to 12-volt DC converter  
Air condition :  
- air conditioner  
- air conditioner with heater  
- heater  
Alarm, back-up  
Beacon light, rotating  
Lighting, auxiliary, 4 on roof  
Cutting edge, bolt-on type  
Differential, Front : no spin  
Rear : limited slip
- Emergency steering system  
Fire extinguisher  
Hourmeter  
High lift arrangement with optional counterweight, 760 kg (1,680 lb)  
Hydraulic control, 2 lever  
Hydraulic control, 3 lever  
Hydraulic arrangement 3-valve  
Lighting, auxiliary, 4 on roof  
Main disconnect switch
- Mud guard  
Operator suit  
Radio cassette player  
Ride control system  
Seat  
- 2" static seat belt & adjustable mechanical suspension(vinyl)  
- 3" static seat belt & adjustable mechanical suspension

- 3" retractable seat belt & adjustable air suspension  
Tires :  
- 17.5 - 25, 12PR, L2  
- 17.5 - 25, 12PR, L3  
- 20.5 - 25, 16PR, L2  
- 17.5 R25 XHA\*  
- 20.5 R25 XHA\*
- Tool kit  
Tooth, 1 piece, bolt-on type  
Guards  
- crankcase  
- transmission  
Wheel chock  
Window, sliding (left and right side)

Standard and optional equipment may vary. Contact your Hyundai dealer for more information. The machine shown may vary according to International standards. All US measurement rounded off to nearest pounds or inches.



Some of the Photo may include optional equipment.

HYUNDAI WHEEL LOADER **Applied Tier 2 Engine**

# HL740-7 / HL740TM-7 / HL740XTD-7

**HYUNDAI**  
HEAVY INDUSTRIES CO.,LTD.  
**CONSTRUCTION EQUIPMENT**

Head Office(Sales Office)  
1 JEONHA-DONG, DONG-GU, ULSAN, KOREA Tel (82) (52) 202-7970, 7729 Fax (82) (52) 202-7979, 7720  
U.S. Operation : Hyundai Construction Equipment U.S.A., Inc.  
955 ESTES AVENUE, ELK GROVE VILLAGE IL, 60007 Tel (1) 847-437-3333 Fax (1) 847-437-3574  
European Operation : Hyundai Heavy Industries Europe N.V.  
VOSSENDAAL 11, 2440 GEEL, BELGIUM Tel (32) 14-562200 Fax (32) 14-593405-06  
India Operation : Hyundai Construction Equipment India Private Limited  
303, 3rd Floor, Siddhivinayak Aarum, 33/1/12 Vadgaon Sheri,  
Vinam Nagar, Pune 411 014 India Tel 91-20-4003-8160 Fax 91-20-4003-8163

PLEASE CONTACT



# Hardworking Hyundai Loaders



Meet the new generation wheel loader in Hyundai.

The HL740-7 will give you the satisfaction in higher power, lower fuel consumption, more comfort and lower emission.

Come and experience what Hyundai has created for you by bringing together power and up-to-the-minute technology.

## Wheel Loader **HL740-7**

### Engine

- Electronic Engine Control System
- Engine Protection & Self-diagnosis System
- Max. Power 145 HP

### Transmission

- 2 Automatic Selection Mode
- 2 Kick Down Function Mode
- AEB Function



**HL740**™-7

■ Some of the photos may include optional equipment.



# Control Center

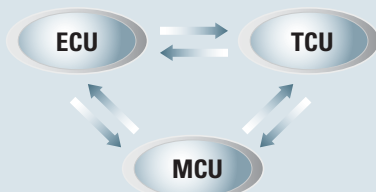
The all-new, deluxe operating space was engineered with 3-D modeling to be your ultimate control center. The wide, tinted and laminated front windshield has no framing cutting through to ensure excellent visibility.



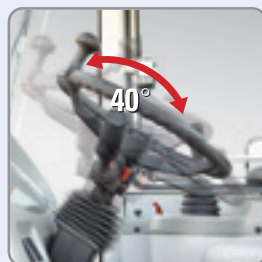
Some of the photos may include optional equipment.

## Up-to-date-technology CAN system

Engine Control Unit(ECU), Transmission Control Unit(TCU) and Machine Control Unit(MCU) realize the optimal performance through the mutual CAN communications.



## Adjustable steering column



## Full automatic shift lever

A single lever on the left side of the steering column gives the operator fast, easy control of speed and direction. Push the lever forward to go forward, pull it back for reverse.

Travelling is automatically changed from 1st stage to given stage according to travel speed and tractive effort.

The operator can select two kinds of automatic modes (1st ↔ 4th, 2nd ↔ 4th).

This exclusive feature contributes to an improvement in productivity and reduction of operator fatigue.



## The Centralized Display & Switch Panel

The centralized digital display shows the status and conditions of your machine at a glance.



## Joystick Control Lever

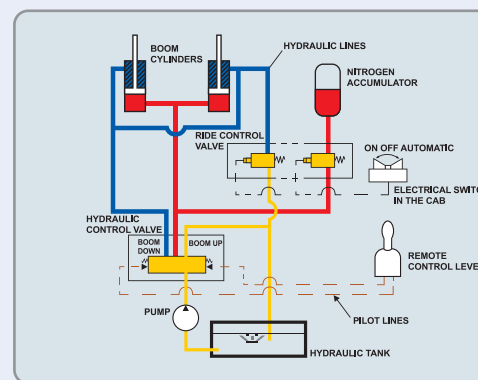
Two kickdown switches located on top of the loader control lever and the gear shifting lever allow the operator to change instantly to 1st stage lower gear, in order to drive at full power into the material.



## The Air Conditioning and Heating System



The operator can easily control the temperature and air flow. The defroster on the front windshield and rear window makes it convenient for winter working usage.



## Ride control system (optional)

The ride control system is available for smooth travelling as an option. It significantly reduces machine bouncings and absorbs the shocks in the machine, enhancing the productivity of the machine. This system reduces the fatigue of the driver as well as the stress on the structures and components.

The system is consisted of accumulators in the hydraulic lift circuit, hydraulic control valve and selection switch.

- ① Off position : Function is cancelled
- ② On position : Function is available
- ③ Auto position : Function is available when the machine travels above 9.5km/hr(6.0mph). If the machine travels under 8 km/hr (5.0 mph), the function is cancelled automatically.



# A Well Rounded System



Some of the photos may include optional equipment.

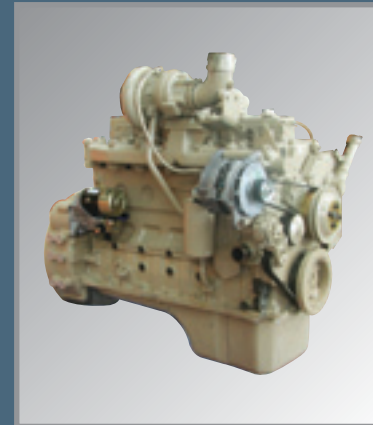


## Up-to-date hydraulic remote cooling fan

The minimum fuel consumption and low noise is realized by applying hydraulic cooling fan that senses coolant temperature, intake air temperature, transmission oil temperature and hydraulic oil temperature.

### Reversible cooling fan (Option)

Optional reversible cooling fan that ejects debris in the radiator and cooler.



## Engine

The CUMMINS QSB5.9-C electronic control engine combines full-authority electronic controls with the reliable performance. The combination of improved airflow and evenly dispersed fuel results in increased power, improved transient response and reduced fuel consumption. And the QSB5.9-C used advanced electronics

controls to meet the emission standards (EPA TierII, EU StageII)



## Multi Function Transmission

The newly developed transmission control represents the beating heart of transmission. The hydraulic system for gearshifts is working with proportional valves, which allows a very precise control of the clutches. For each gear change, the control unit performs a monitoring function to ensure that the specified shift curve is adhered, and readjusts the shift pressure applied to the clutches accordingly. This results in smooth gearshifts-even when

loaded-without traction interruptions. This helps to avoid standstill of the vehicle, sudden load changes and torque peaks under all conditions, for example, application on steep terrain with full load. In addition, there is an option for the driver to make gearshifts manually.



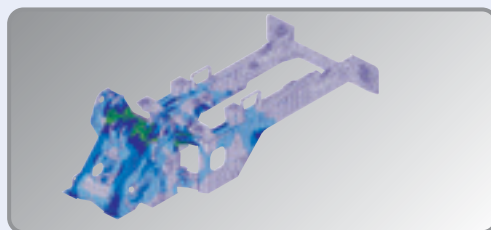
## Axle

Inboard type brake discs. Heavy duty axle.



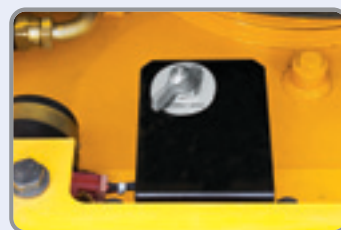
## Bucket cylinder guard

This guard helps to prevent possible damages from the load material.



## High-rigidity frames

Front and rear frames are designed for work in the toughest applications to provide high rigidity for the power train and loader equipment. The high-rigidity frames, together with the reinforced loader linkage, resist loading stress and shock.



## Battery master switch

A master switch disconnects the battery power to protect the electrical system from excessive electrical drainage.



## Chromium - Plated PIN is applied

With the application of Chromium Plated PIN, durability and precision are improved and the life cycle became longer.



## Sealed loader linkage

Fully protected fitting and the sealed loader linkage with dust seals and o-ring will extend lubrication intervals remarkably.



## Frame lock

The machine can be locked by this locking bar to prevent movement during transportation.



# Accessible and Serviceable



■ Some of the photos may include optional equipment.



## Easy Access to All Engine Accessory

Here you find the engine oil check, and the main and pre-filters. The large access engine side panels allows easy and safe inspections. The fuel filter can be spun on and off for quick replacements.



## Cabin Air Fresh Filter

The internal pressure is maintained to be slightly higher than outside to exclude dust and to reduce noise levels.



## Remote type drain port

It is now easier to change your engine oil, coolant and hydraulic oil with the remote drain port.



## Coolant Sight Gauge

The coolant sight gauge is installed on the radiator top tank for convenient checks of coolant level.



## Accessible grease fittings

Grease fittings are highlighted and available around the machine for fast access when doing your service checks.



## Simple air filter replacements

The air cleaner is easily replaceable by turning the wing nut on the outer shell counterclockwise.



## Central electric controllers & Fuse box

Electric controllers for Hyundai loader are centralized to improve serviceability. A concentrated fuse box for easy inspection.



## Hydraulic tank

The hydraulic tank is located behind the cab to increase the accessibility of hydraulic hoses and pipes.



## Oil sight gauge

The hydraulic oil check sight gauge is installed on the side of the hydraulic tank for convenient checks from ground level.



## Transmission oil port

The transmission oil change port is also located for easy accessibility and comes with an anti-vandalism lock for your machine protection.





# Specifications & Dimensions

**HL740-7 HL740<sup>TM</sup>-7 HL740<sup>XTD</sup>-7**



## Engine

<b>Maker/Model</b>	Cummins QSB5.9-C
<b>Type</b>	4-cycle, turbocharged, electronic controlled diesel engine
<b>Gross power</b>	140HP(104 kW) / 2,200rpm
<b>Net power</b>	133HP(99 kW) / 2,200rpm
<b>Maximum power</b>	145HP(108 kW) / 2,000rpm
<b>Maximum torque</b>	60kg·m(434 lb-ft) / 1,500rpm
<b>No. of cylinders</b>	6
<b>Bore x Stroke</b>	102 mm (4.02") x 120 mm (4.72")
<b>Displacement</b>	5.9 ℓ (359 cu in)
<b>Compression ratio</b>	18.0 : 1
<b>Air cleaner</b>	Dry, dual elements
<b>Alternator</b>	24V, 70 Amp
<b>Battery</b>	2 x 12V, 80 AH.
<b>Starting motor</b>	24V, 3.7 kW
<b>Cooling</b>	Hydraulic remote cooling system

Net power output of standard engine as installed in this vehicle(per SAE J1349) complete with fan, air cleaner, alternator, water pump, lubricating oil pump and fuel pump. No derating for continuous operating required up to 3048m (10000ft). This engine meets the EPA(TierII) / EU(StageII) Emission regulation.

## Transmission

Full automatic power shift, countershaft type with soft-shift in range and direction. Properly matched torque converter to engine and transmission for excellent working ability. Two mode automatic shifting system.

<b>Torque converter type</b>	3-elements, single-stage single-phase	
<b>Stall torque ratio</b>	2.910 :1	
<b>Tire</b>	20.5-25, L3	
<b>Travel speed</b>	Km/h (mph)	
Forward	1st	6.9 (4.3)
	2nd	12.6 (7.8)
	3rd	24.0 (14.9)
	4th	38.2 (23.8)
Reverse	1st	7.3 (4.5)
	2nd	13.3 (8.3)
	3rd	25.3 (15.7)

## Axles

<b>Drive system</b>	Four-wheel drive system
<b>Mount</b>	Rigid front axle and oscillating rear axle
<b>Rear axle oscillation</b>	± 12° (total 24°)
<b>Hub reduction</b>	Planetary reduction at wheel end
<b>Differential</b>	Limited slip front & Conventional rear
<b>Reduction ratio</b>	22.846

## Hydraulic system

<b>Type</b>	Open-centered, tandem circuit system. Pilot-operated controls. Closed with pressure and vacuum relief.	
<b>Pump</b>	Helical gear type, 177 liters/min (46.8 USgpm)@governed rpm	
<b>Control valve</b>	Two function valve with single or two lever controls : Optional third-function valve with auxiliary lever. 220 kg/cm <sup>2</sup> (3,130 psi)	
<b>Relief valve setting</b>		
<b>Pilot system</b>		
<b>Type</b>	Pilot oil pressure is generated by the pilot oil supply unit 30 kg/cm <sup>2</sup> (427 psi)	
<b>Relief valve setting</b>		
<b>Bucket controls</b>		
<b>Type</b>	Pilot operated lift and tilt circuit, single-lever(joystick) control standard.	
<b>Lift circuit</b>	The valve has four functions ; raise, hold, lower and float. Can adjust automatic kickout from horizontal to full lift.	
<b>Tilt circuit</b>	The valve has three functions ; tilt back, hold and dump Can adjust automatic bucket positioner to desired load angle.	
<b>Cylinder</b>	Type : Double acting No. of cylinders-bore x stroke; Lift HL740-7 2-120 mm(4.7") x 738 mm(29.1") HL740TM-7 1-140 mm(5.5") x 500 mm(19.7") HL740XTD-7 2-100 mm(3.9") x 745 mm(29.3")	
<b>Cycle time</b>	<b>HL740-7/HL740XTD-7</b>	<b>HL740TM-7</b>
Raise (with load)	5.5 sec	5.5 sec
Dump	1.2 sec	1.4 sec
Lower (empty)	2.8 sec	2.8 sec
Total	9.5 sec	9.7 sec

## Brakes

<b>Service brakes</b>	Hydraulically actuated, wet disc brakes actuate all 4 wheels independent axle-by-axle system. Single pedal braking including clutch cut off switch.
<b>Parking brake</b>	Spring-applied, hydraulically released wet disc brake in front axle .
<b>Emergency brake</b>	When brake oil pressure drops, indicator light alerts operator and parking brake automatically applies.

## Steering system

<b>Type</b>	Full hydraulic power steering
<b>Pump</b>	Gear type, 99 liters/min(26.2 USgpm) @ governed rpm
<b>Relief valve setting</b>	210 kg/cm <sup>2</sup> (2,990 psi)
<b>Cylinder</b>	
Type	Double acting
Bore x stroke	65 mm(2.5") x 420 mm(16.5")
<b>Steering angle</b>	40°(each direction)

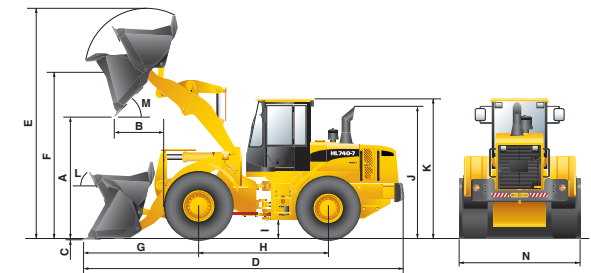
### Features

- Center-point frame articulation
- Load-sensing system
- Steering-wheel operated metering pump controls flow to steering cylinders
- Tilt and telescopic steering column

## Service refill capacities

<b>Fuel tank</b>	228 liters (60.2 USgal)
<b>Cooling system</b>	35 liters (9.2 USgal)
<b>Crankcase</b>	16 liters (4.2 USgal)
<b>Transmission</b>	24 liters (6.3 USgal)
<b>Front axle</b>	21.2 liters (5.6 USgal)
<b>Rear axle</b>	21.2 liters (5.6 USgal)
<b>Hydraulic tank</b>	105 liters (27.7 USgal)
<b>Hydraulic system (including tank)</b>	165 liters (43.6 USgal)

## Dimensions



Description	UNIT	HL740-7	HL740XTD-7	HL740TM-7
Bucket Type	General purpose bolt-on cutting edge			
A. Dumping clearance at max. height and 45° dump angle.	mm (ft-in)	2,850 (9' 4")	3,270 (10' 9")	2,915 (9' 7")
B. Reach	Full lift	970 (3' 2")	965 (3' 2")	1,275 (4' 2")
	7ft height	1,500 (4' 11")	1,860 (6' 1")	1,790 (5' 10")
C. Digging depth(mm (in))	mm (ft-in)	93 (3.7")	130 (5.1")	100 (3.9")
D. Overall length	on ground	7,270 (23' 10")	7,750 (25' 5")	7,550 (24' 9")
	at carry	7,230 (23' 9")	7,720 (25' 4")	7,500 (24' 3")
E. Overall height (fully raised)	mm (ft-in)	5,070 (16' 8")	5,480 (18')	5,150 (16' 11")
F. Bucket pivot max. height	mm (ft-in)	3,830 (12' 7")	4,250 (13' 11")	3,990 (13' 1")
G. Front overhang	mm (ft-in)	2,400 (7' 10")	2,810 (9' 3")	2,625 (8' 7")
H. Wheelbase	mm (ft-in)	2,900 (9' 6")	2,900 (9' 6")	2,900 (9' 6")
I. Ground clearance	mm (ft-in)	417 (1' 4")	417 (1' 4")	417 (1' 4")
J. Height over exhaust	mm (ft-in)	2,900 (9' 6")	2,900 (9' 6")	2,900 (9' 6")
K. Height over cab	mm (ft-in)	3,260 (10' 8")	3,260 (10' 8")	3,260 (10' 8")
L. Roll-back angle	on ground	deg	42	50
	at carry	deg	47	54
M. Dump angle(deg)	deg	48	48	50
Clearance circle	mm (ft-in)	11,770 (38' 7")	12,110 (39' 9")	11,840 (38' 10")
N. Overall width	mm (ft-in)	2,550 (8' 4")	2,550 (8' 4")	2,550 (8' 4")

## Overview

Description	UNIT	HL740-7	HL740XTD-7	HL740TM-7	
Operating weight	kg (lb)	11,500 (25,350)	11,850(26,120)	12,050 (26,570)	
Bucket capacity	Heaped	m <sup>3</sup> (yd <sup>3</sup> )	2.1 (2.7)	2.1(2.7)	2.0 (2.6)
	Struck	m <sup>3</sup> (yd <sup>3</sup> )	1.78 (2.3)	1.78(2.3)	1.7 (2.2)
Breakout force-bucket	kg (lb)	11,880(26,190)	11,730(25,860)	10,650(23,480)	
Tipping load	Straight	kg (lb)	9,180(20,240)	8,320(18,340)	7,950(17,530)
	Full turn	kg (lb)	7,930(17,490)	7,210(15,900)	6,860(15,120)

## Tires

<b>Type</b>	Tubeless, loader design tires
<b>Standard</b>	20.5-25, 16 PR, L3
<b>Options include</b>	17.5-25, 12 PR, L2
	17.5-25, 12 PR, L3
	20.5-25, 16 PR, L2
	17.5 R25 XHA* 20.5 R25 XHA*