

Specifications

Thermodynamic cycle	Diesel 4 stroke	
Air intake	TAA	
Arrangement	6L	
Bore x Stroke	mm	104 x 132
Total displacement	l	6.7
Valves per cylinder	n°	4
Cooling system	liquid	
Direction of rotation (viewed facing flywheel)	CCW	
Compression ratio	17 : 1	
Injection system	Electronic Common Rail	

Performance

Rated power [*]	kW(HP)	210 (286)
At speed	rpm	2200
Peak power	kW(HP)	210 (286)
At speed	rpm	2200
Peak torque	Nm(kgm)	1143 (117)
At speed	rpm	1500
Maximum no load governed speed at max rating	rpm	2375
Minimum idling speed	rpm	850
DEF [**]/AdBlue consumption at peak torque and rated power	(% fuel weight cons.)	5 - 6
Minimum starting temperature without auxiliaries	°C	-15
Oil and oil filter maintenance interval for replacement [***]	hours	600
Dry weight (standard configuration without: oil, cooling, starter, clutch, Compressor A/C, alternator)	kg	520

FOR INFORMATION ON THE AVAILABLE RATINGS NOT LISTED IN THIS DOCUMENT PLEASE CONTACT THE FPT SALES NETWORK.

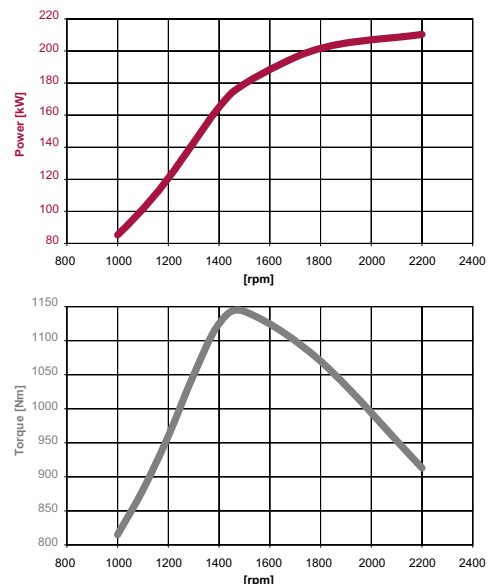
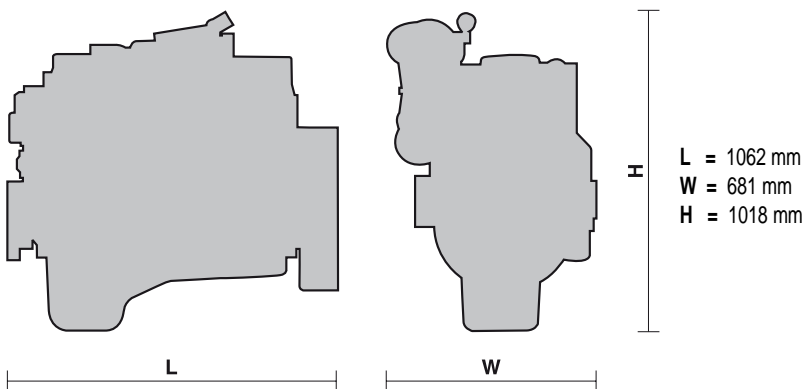
[*] Power at flywheel according to 97/68 EC (without fan), after 50 hours running, 3% tolerance, Fuel Diesel EN 590.

[**] DEF: Diesel Exhaust Fluid.

[***] Oil type: Approved engine oil specification: 15W-40 ACEA E7 / API CI-4 or 10W-30 ACEA E7 / API CI-4 (ambient temperature below -15°C). 10W-40 ACEA E9/API CJ-4 as alternative.

Test conditions: ISO 3046/1, 25 °C air temperature, 100 kPa atmospheric pressure, 30 % relative humidity - Applicable also to DIN 6271, BS 5514, SAE J1349 Standards

Dimensions:



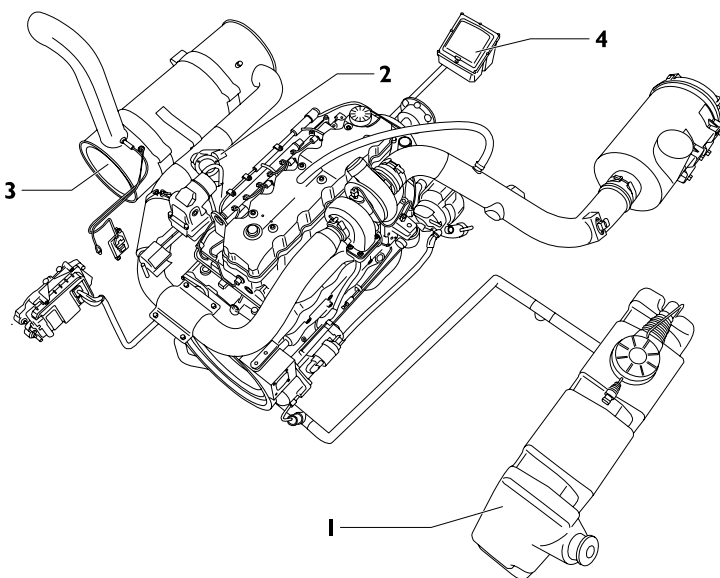
Standard configuration

Flywheel housing	type	SAE 3 - cast iron
Flywheel size	inch	11" ½
Intake manifold location		high / left side / vertical from top
Exhaust manifold location		high / right side / front
Turbocharger		fixed geometry with waste gate valve
Turbocharger location		high / back / right side
Fan transmission ratio		1.4 : 1
Distance between fan - crankshaft centers	mm	x = 0 ; y = 296
Fuel filter	n°	single cartridge - left side
Oil filter	n°	single cartridge - right side
Oil sump		suspended sheet steel / front sump, 35° angularity limits continuous in all directions
Oil vapours blow-by circuit		flywheel housing, Mann & Hummel valve
Oil heat exchanger		integrated into the block
Oil filler		on valve cover
Starter		24V - 4kW
Alternator		24V - 70A with W contact
Engine stop device		incorporated in the pump
Wiring harness		-
Painting	color	grey

Not included in the standard configuration

Power take off - transmission ratio		1.03 : 1
PTO maximum available torque	SAE A	100Nm (9 teeth) - 150Nm (11 teeth)
	SAE B	240Nm (13 teeth)
Battery - minimum capacity recommended		130Ah (24V)
Battery - minimum cold cranking capacity recommended		500A (24V)

Aftertreatment System



SCR (Selective Catalytic Reduction) system

Main components

- 1) AdBlue/DEF* Tank: available options 43 and 61 liters
- 2) Dosing Module
- 3) SCR muffler: available options Horizontal configuration
- 4) Supply Module

*DEF: Diesel Exhaust Fluid

FPT OFFERS THE WIDEST AVAILABILITY OF ENGINE BUILD OPTIONS TO CUSTOMER SPECIFIC REQUIREMENTS WITHIN THE ENGINE SUPPLY. TO FIND OUT MORE ABOUT THE CONFIGURATIONS AND ACCESSORIES WHICH ARE AVAILABLE, CONTACT THE FPT SALES NETWORK.