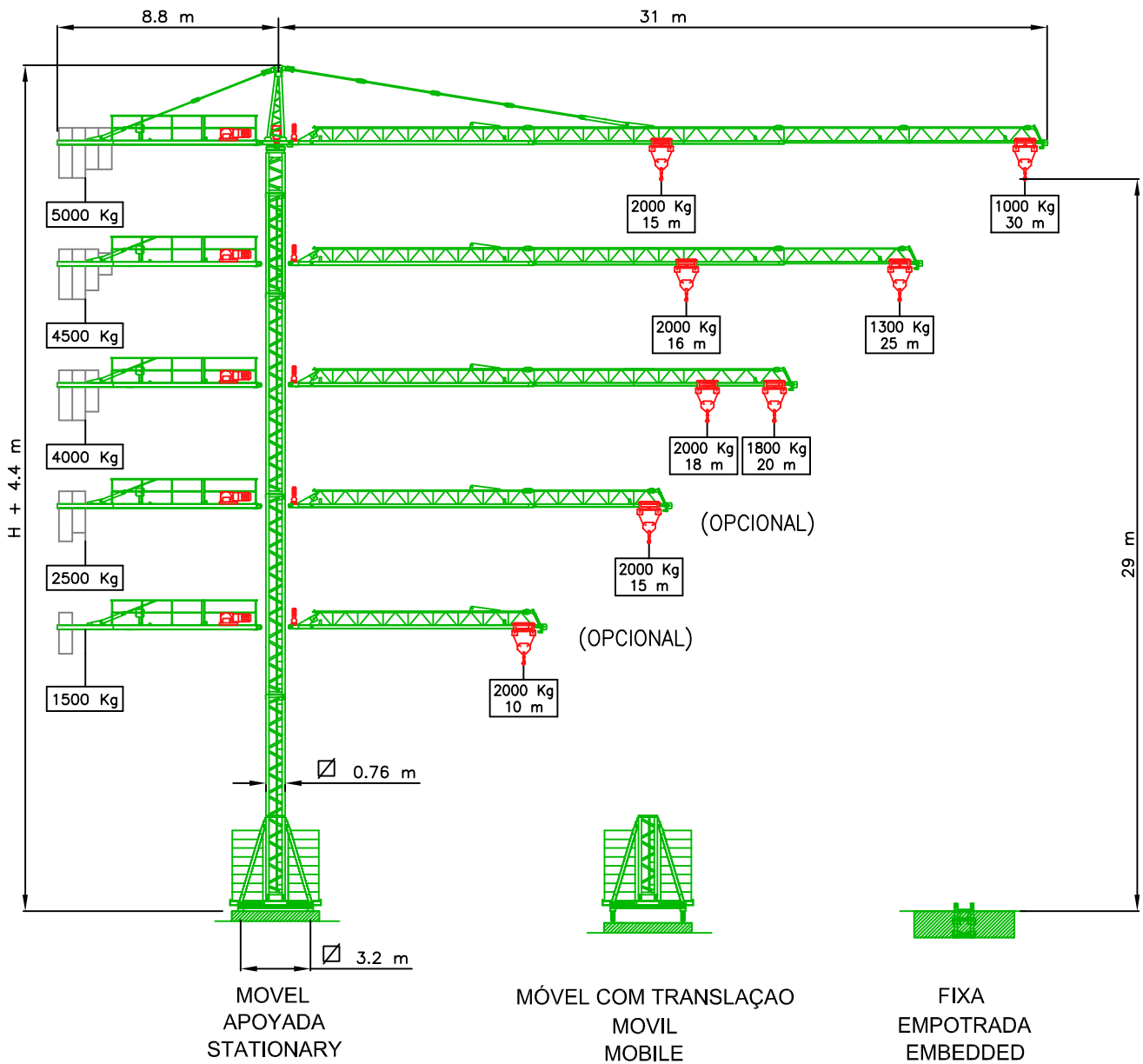








GUINDASTE DE TORRE - TOWER CRANE - GRÚA TORRE



MECANISMOS - MECHANISM - MECANISMOS

			1.5 Kw 45 m/min								
	7.5/7.5 Kw		3 Kw 0 - 1 r.p.m.								
	<table border="1"> <tr> <td>2000</td> <td>2000</td> <td>1000</td> <td>Kg</td> </tr> <tr> <td>8</td> <td>25</td> <td>50</td> <td>m/min</td> </tr> </table>	2000	2000	1000	Kg	8	25	50	m/min		2 X 2 Kw 23 m/min
2000	2000	1000	Kg								
8	25	50	m/min								

ALCANÇE E CAPACIDADE DE CARGA - RADIUS AND CAPACITY - ALCANCES Y CARGAS

SERIE 30
M-3010

De acordo com / According to / De acuerdo con:
UNE 58-101-92
DIN 15018 H1 B3
Directivas 84/534/CEE y 87/405/CEE
89/392/CEE y 91/368/CEE

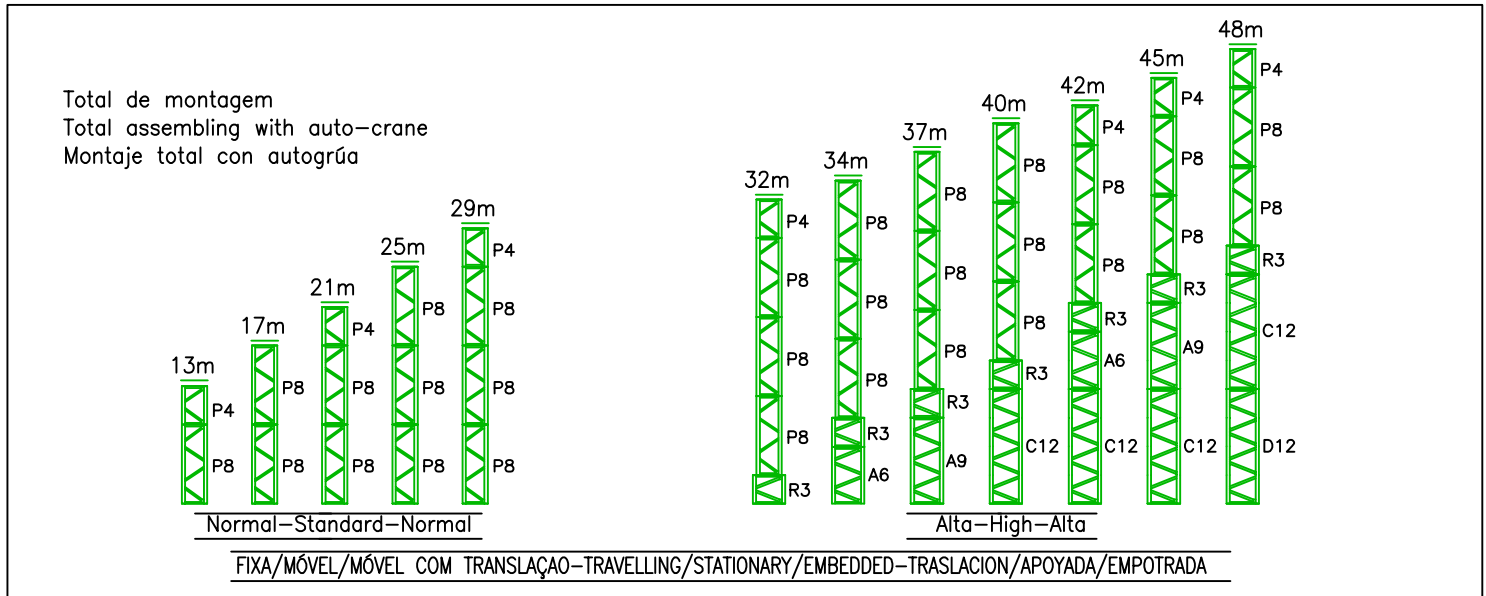
m	15	16	18	20	21	23	25	27	30	LANÇA A 30 M
Kg	2000	1850	1650	1500	1400	1300	1200	1100	1000	
m	16	19	20	21	23	25	LANÇA A 25 M			
Kg	2000	1800	1650	1400	1350	1300				
m	18	19	20	LANÇA A 20 M						
Kg	2000	1900	1800							
m	15	LANÇA A 15 M								
Kg	2000									
m	10	LANÇA A 10 M								
Kg	2000									

CARACTERISTICAS - CHARACTERISTICS - CARACTERISTICAS

MÓVEL STATIONARY APOYADA	Pesos do guindaste Weight of crane Peso de la grúa 13 Tn (*) 20 Tn	Altura de montagem Height under hook Altura bajo gancho H = 29 m (*) H = 48 m	Lastro Base ballast Lastre de base 40 Tn -	Reacções máximas - Maximum reaction	
				Em serviço In service En servicio 28 Tn	Fora de serviço Out of service Fuera de servicio 35 Tn
FIXA EMBEDDED EMPOTRADA	Pesos do guindaste Weight of crane Peso de la grúa 13 Tn (*) 20 Tn	Altura de montagem Height under hook Altura bajo gancho H = 29 m (*) H = 48 m	Lastro Base ballast Lastre de base - -	Reacções máximas - Maximum reaction	
				Rx=3.768Kg Ry=18.126Kg Mz= 55.217Kg (*) Rx=6.765Kg Ry=22.353Kg Mz=164.027Kg	

(*) SERIE ALTA - (*) HIGH SERIES - (*) SERIE HAUTE

ALTURAS SEM CINTA - HEIGHTS WITHOUT BRACING - ALTURAS SIN ARRIOSTRAR



Salvo modificação da construçao
Subject to modification without previous warning
Reservado el derecho a modificaciones sin previo aviso

Tensao-Mains supply-Red: 440V 60Hz
Potencia total-Power-Potencia: 15 KVA



GRÚAS METALBO

Autovía de Logroño Km 17,5, sector 16, pol. 4
50298 Pinseque - Zaragoza (España)

Delegaço:

<http://www.gruasmetalbo.com>
Telefono: 00 34 976 65 65 86
Fax: 00 34 976 65 19 33