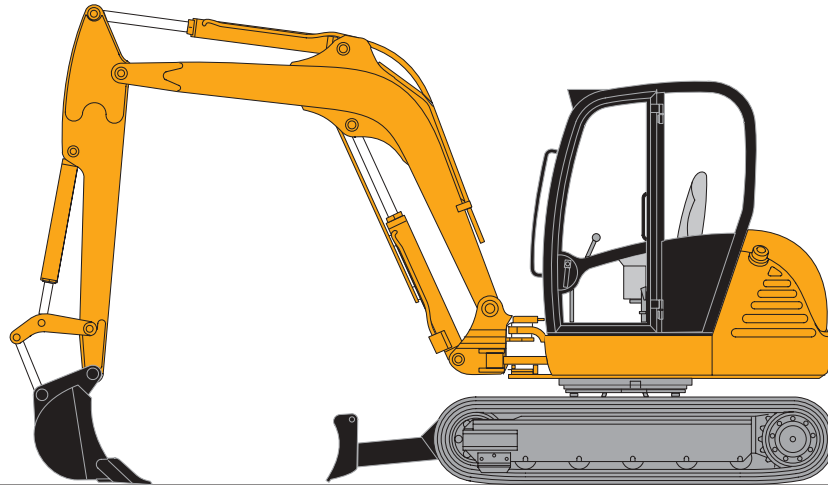




JCB MIDI EXCAVATOR | 8060



JCB MIDI EXCAVATOR | 8060

FAST FACTS

● UNMATCHED PERFORMANCE

Through visibility, lifting and digging ability, the 6.0 ton 8060 provides superb performance and excellent value for the money. A new design concept called “minimal tailswing”, pioneered by JCB on the previously introduced and slightly smaller 8052, provides optimum visibility, stability and serviceability while minimizing counterweight overhang in tight, confined areas.

● EXCAVATOR FEATURES

Computer-aided designed components pre-tested prior to manufacture for strength and durability.

● MANEUVERABILITY

Full 360° cab swing, combined with independent boom swing provides excellent maneuverability and productivity.

● EXCAVATOR PERFORMANCE

10,768lbs of bucket breakout and 7283lbs of dipper force give unmatched performance in hard digging applications.

● ISUZU DIESEL ENGINE

Following in the footsteps of its bigger brothers, the 8060 is powered by an Isuzu 59.6 HP gross diesel with 142 lbft of torque. The 4JGI is a 4 cylinder, 4 stroke, direct injection, naturally aspirated, water cooled diesel with a 3.0 liter displacement and extended 500 hour service interval.

● UNDERCARRIAGE

Rubber or steel track options utilize the same roller design for easy changeover. Swing turret is a fully enclosed system protected from dirt and debris. Tracks are hydraulically adjusted (grease gun).

● HYDRAULICS

Rexroth variable displacement hydraulic pump, matched with a Rexroth 10 section control valve provides 39.5gpm to power 214 backhoe attachments. Double acting hydraulics is standard.

● DRIVE MOTORS

Powerful Transmittal 2-speed track motors provide increased drawbar pull and drive torque for excellent performance and maneuverability.

● SWING MOTOR

Toshiba swing motor provides ample torque to allow 8060 to swing up 22° slope with a full bucket at full reach.

● OPERATORS AREA

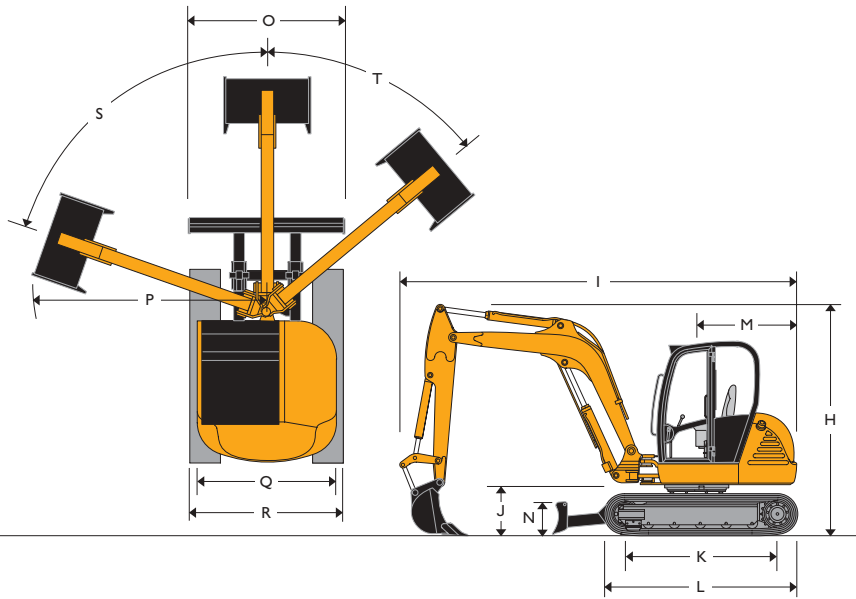
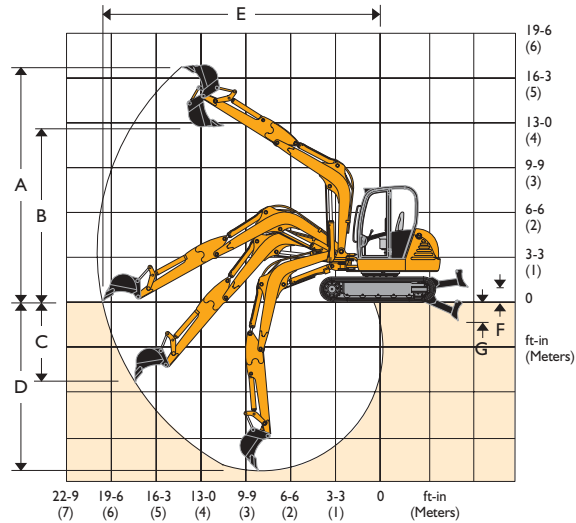
The fully enclosed cab with heater, defroster and windshield wiper are TOPS/FOPS/FOGS certified for operator safety and comfort. All controls and instrumentation are ergonomically designed and located for maximum convenience and productivity. DPC – dual pattern control changeover system provides quick and easy control pattern changes between SAE and ISO.



JCB MIDI EXCAVATOR | 8060



STATIC DIMENSIONS



STATIC DIMENSIONS

	ft-in (mm)	ft-in (mm)
Dipper	4-11 (1500)	6-3 (1900)
A Max dig height	17-10 (5437)	18-7 (5679)
B Max dump height	12-3 (3750)	13-1 (3988)
C Max vertical dig depth	7-0 (2132)	8-2 (2486)
D Max dig depth-dozer up	12-3 (3733)	13-7 (4133)
E Max ground level reach	19-0 (5790)	20-3 (6182)
		ft-in (mm)
Bucket rotation	degrees	201°
F Dozer cut above ground		1-5 (432)
G Dozer cut below ground		1-8 (505)
H Overall Height (trans pos)		8-9 (2662)
I Overall Length (trans pos)		15-9 (4808)
J Kingpost clearance		2-1 (642)
K Sprocket idler centres (rubber)		6-6 (1991)
K Sprocket idler centres (steel)		6-8 (2006)
L Undercarriage length (rubber)		8-3 (2516)
L Undercarriage length (steel)		8-4 (2531)
M Tailswing		4-3 (1300)
N Dozer height		1-4 (411)
O Dozer width		6-8 (2020)
P Min. swing radius (no bucket)		6-8 (2021)
Q Superstructure width		5-11 (1800)
R Width over tracks		6-7 (2000)
S Boom swing left	degrees	70°
T Boom swing right	degrees	50°
Min Slew radius (no offset)		8-0 (2443)
Max Bucket tearout (214 bucket) (SAE J1179)	lbf (kN)	9149 (40.7)
Max Bucket tearout (8052 bucket) (SAE J1179)	lbf (kN)	10768 (47.9)
Max dipper tearout (SAE J1179) 1500mm	lbf (kN)	7283 (32.4)
Max dipper tearout (SAE J1179) 1900mm	lbf (kN)	5912 (26.3)
Travel speeds 1st Gear	mph (kph)	1.56 (2.5)
Travel speeds 2nd Gear	mph (kph)	2.7 (4.4)
Swing speed	rpm	9.4

JCB MIDI EXCAVATOR | 8060



JCB MIDI EXCAVATOR | 8060



JCB MIDI EXCAVATOR | 8060

ENGINE

4 cylinder, 4JG1, 4 stroke, diesel engine, direct injection, naturally aspirated, 3 litres displacement. Water cooled. Engine oil service intervals: 500 hours. E4* 97/68 GA* 97/68* 0042* 00 (tier 2 compliant).

Model		Isuzu 4JG1
Gross power @ 2300rpm	hp (kW)	59.6 (44.5)
Net power @ 2300rpm	hp (kW)	57.6 (43)
Gross torque @ 1800rpm	lb ft (Nm)	141.6 (192)
Displacement	cc	3059

HYDRAULICS

Variable displacement load sensed Rexroth pump with power control system.

Nominal Output	US gal (lpm)	39.6 (150)
Excavator/track main relief	psi (bar)	3335 (230)
Slew main relief	psi (bar)	2900 (200)
Auxiliary hydraulic flow	US gal (lpm)	25 (95)
Hydraulic motors		2 speed piston type

Swing brake: hydraulic braking plus automatic spring applied disc type parking brake.

SERVICE CAPACITIES

	US gal (ltr)
Water system capacity – cab	2.9 (11)
Fuel tank capacity	18.5 (70)
Engine oil capacity	2.5 (9.6)
Hydraulic tank capacity	17.7 (67)

UNDERCARRIAGE

No. of bottom rollers		5 per side
Track width	in (mm)	15.7 / 21.6 (400 / 550)
Ground pressure	lb/sq.in (kg/cm ²)	5.26 (0.37)
Track tensioning		Grease

MACHINE WEIGHTS

Operating weight	lbs (kg)	13210 (5991)
With 15.7in (400mm) steel tracks – add	lbs (kg)	176 (80)
With wide steel tracks – add	lbs (kg)	551 (250)

Operating weight includes: standard machine with cab, rubber tracks, 74.8in (1900mm) dipper, full tanks, 24in (610mm) bucket and a 165lb (75kg) operator.

STANDARD EQUIPMENT

Cab: TOPS/FOPS/FOGS certified for operator safety and comfort. Heater and defroster, windshield washer/wiper. Track lever pedals. Double acting hydraulic circuit for operation of hydraulic breakers and augers. Second auxiliary circuit 11.9 US gal (0-45 liters). 2 Speed tracking. Full audible systems. Slew lock. Boom work light. Ergonomically designed Rexroth servo controls. Rubber Tracks (1ft 4in / 400mm). Suspension seat.

OPTIONAL EQUIPMENT

Short dipper (4ft 11in / 1500mm). Cab/Canopy working lights (2 front, 1 rear). Air conditioning. Wide steel tracks (1ft 10in / 550mm). Steel tracks (1ft 4in / 400mm). Stereo Radio Cassette. Engine fan guard. Flashing Beacon. Buckets in widths (ft-in/mm): BHL (standard) 0-9/230, 1-0/305, 1-2/350, 1-4/400, 1-6/460, 2-0/610, 3-0/915, 8052 (higher tearout) 1-0/300, 1-2/350, 1-4/400, 1-6/460, 2-0/600, 2-6/750, 3-0/900. Ditching/grading bucket (ft-in/mm): 5-0/1525.

Attachments: JCB 260/360 breaker, earth drill, mechanical quickhitch.

LIFTING CAPACITY – 75in (1900mm) Dipper

B	A		8ft-2in		9ft-10in		11ft-6in		13ft-1in		14ft-9in		16ft-3in		Max.	
	O/D	360°	O/D	360°	O/D	360°	O/D	360°	O/D	360°	O/D	360°	O/D	360°	O/D	360°
8ft-2in	–	–	–	–	–	–	2448	2426	2558	1764	2602	1521	2690	1433		
6ft-7in	–	–	–	–	2867	2822	2778	2580	2734	1786	2734	1455	2778	1345		
4ft-11in	4895	–	4035	3793	3572	2558	3219	2073	3109	1720	3021	1433	3021	1301		
3ft-3in	6637	3815	4961	2955	3969	2426	3528	1764	3175	1698	3021	1389	2933	1235		
1ft-8in	7850	3506	5799	2778	4454	2205	3881	1896	3462	1610	3219	1367	3109	1235		
Ground level	7210	3462	6218	2778	5072	2227	4212	1852	3726	1544	3374	1367	3197	1257		
-1ft-8in	8225	3462	6571	2734	5424	2183	4366	1808	3903	1521	3440	1301	3352	1301		
-3ft-3in	8445	3418	6725	2712	5248	2161	4498	1808	3771	1499	–	–	3396	1367		

A = Horizontal distance from swing center. B = Vertical distance from ground level. O/D = Lift capacity over dozer. 360° = Lift capacity around machine. All lift capacities in pounds.

Hard Working by Design



JCB MIDI EXCAVATOR | 8060



THE BEST BACK-UP IN THE BUSINESS

Buy any JCB model and you'll get a complete deal that extends beyond that of any rival.

FINANCE

Your JCB Dealer can meet your financial needs through a variety of plans for leasing, lease purchases with or without options, installment sales contracts and rental programs.

PARTS

JCB Dealers' convenient locations offer excellent 'over the counter' parts availability.

WARRANTY

JCB machines are covered by JCB's one year standard warranty, which is outlined in the JCB 'Certificate of Warranty'. Extended warranty coverage is also available. Contact your JCB Dealer for details.

REGIONAL PARTS DEPOTS

For the breakdown part your dealer may not have in stock, JCB has SDD 'Same Day Dispatch,' from two parts distribution centers in the United States and one in Canada.

SERVICE

JCB Dealer service people are committed to keeping your JCB up and running. JCB Dealer mechanics are enrolled in on-going training programs and supported by experienced JCB Service Representatives based throughout North America.



JCB Inc, PO Box 18306, Savannah, GA 31418. Tel: (912) 447-2000. Fax: (912) 447-2299. www.jcb.com

JCB reserves the right to change design, materials and/or specifications without notice. Specifications are applicable to units sold in the United States and Canada. The JCB logo is a registered trademark of J C Bamford Excavators Ltd.

USA ????????

JCB MIDI EXCAVATOR | 8060

Hard Working
by Design