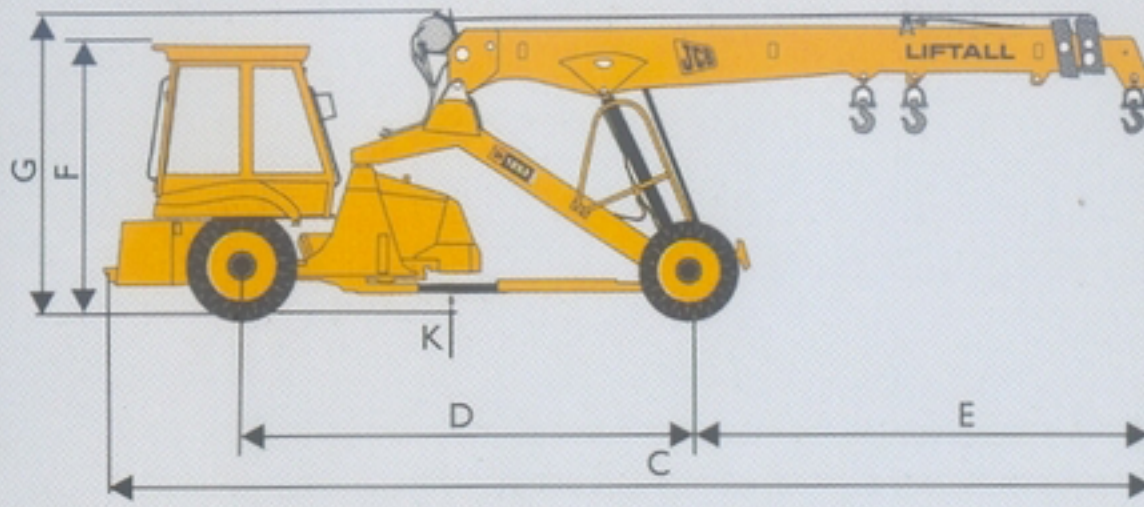


## STATIC DIMENSIONS

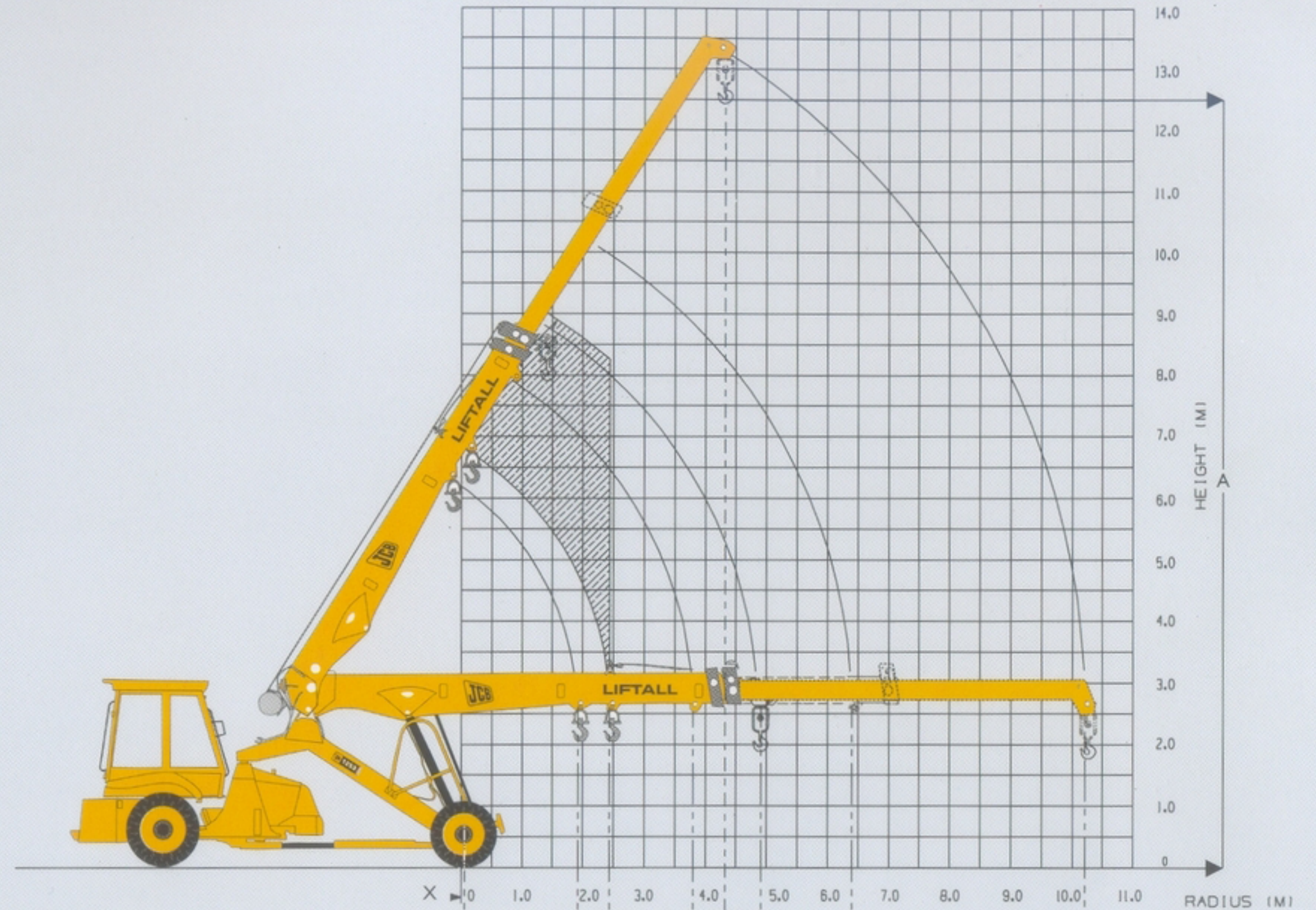


All dimensions are in mm



## LOAD CHART - JCB LIFTALL 1253

SLOTTED BOOM ADVANTAGE



Reach (Metres)	1.9	2.4	3.0	3.8	4.3	4.9	5.0	6.4	7.0	8.0	9.0	10.2
Capacity (Tonnes)	12	10	7.6	6.0	5.3	4.7	4.6	3.3	3.0	2.5	2.2	2.0

85% DUTY AS PER IS 4573

## DIMENSIONS

A	Maximum Height of Lift (under hook)	12500 mm	E	Overhang	5000 mm	I	Front Track	1952 mm
B	Maximum Horizontal Reach	10200 mm	F	Height Over Cab	2983 mm	J	Rear Track	1600 mm
C	Travel Order Length	11370 mm	G	Height Over Winch	3276 mm	K	Min. Ground Clearance	277 mm
D	Wheel Base	4875 mm	H	Overall Width	2495 mm	L	Lift Capacity at X distances from centre of front wheels	

All dimensions, weights and timings could have variance. JCB reserves the right to change specifications without prior notice.

## ENGINE

- Kirloskar 4R810 - Four cylinder liquid cooled naturally aspirated diesel engine.
- Rated Power 56 BHP @ 2000 RPM.
- Max Torque 215 NM @ 1500 RPM.

## TRANSMISSION

- Heavy duty gear box with 8 forward and 2 reverse speeds with high-low speed selector mechanism through lever.
- Single plate dry type friction clutch – 12" dia.

## SPEEDS (UNLADEN)

Forward	Low (km/hr) (At Idle RPM)	High (km/hr) (At Rated RPM)
1st Gear	1.2	10.0
2nd Gear	1.5	13.0
3rd Gear	2.4	22.0
4th Gear	3.3	30.0
Reverse	1.6	14.0

## BRAKES

**Front brakes:** Pneumatic assisted hydraulically operated mechanical brakes.

**Rear brakes:** Mechanical disc type brake actuated through a slave cylinder operated through servo cylinder.

**Parking brakes:** Mechanically actuated brake on rear wheels.

## BOOM

3 section slotted boom, telescopically extendable from 4.8 m to 10.2 m through double acting hydraulic ram.

Max under hook height : 12.5 m

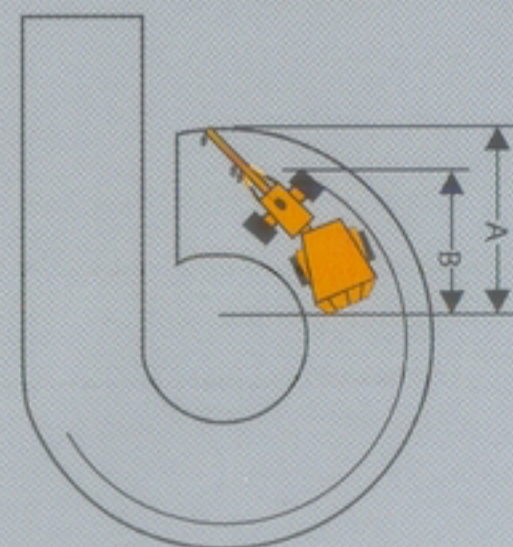
## WINCH

- Planetary type reduction gear box hydraulic winch suitable for heavy duty crane application.
- Lift capacity 10T (with 4 falls).
- 13 mm diameter anti twist wire laminated rope.
- Rope self compensation system for automatic leveling of load.

## STEERING

Hydraulic articulated steering with 56° articulation on either side through two double acting rams.

## TURNING RADIUS



### Circle radius:

A. Outside Boom : 6450 mm  
B. Outside Tyres : 5250 mm

## HYDRAULICS

- Vane type hydraulic pump for better crane application.
- Four spool flow directional control valve with maximum operating pressure of 185 bar.
- Control valve having 4 separate levers for crane operations from operator cabin : Boom up / down, Telescoping in / out, Winching and Steering.
- 100 Mesh size suction strainer.
- Direct tank top mounted type return line filter with 25 micron size full flow filtration.

## TYRES

Front : 11.00 x 20.00 – 16 PR (4Nos).  
Rear : 13.00 x 24.00 – 12 PR (2Nos).

## ELECTRICALS

- 12V system with Battery capacity of 75 AH.
- Charging Alternator with Max output 55 Amps.
- IP69 external connectors

## OPERATING WEIGHT

11300 kgs (Unladen)

## FLUID CAPACITIES

Engine : 8.5 lt  
Fuel Tank : 60 lt  
Hydraulic Tank : 90 lt

## OPERATIONAL CYCLE TIMINGS

(No load at rated engine RPM)

Boom Raising : 22 secs.  
Boom Lowering : 20 secs.  
Telescopic In : 8 secs.  
Telescopic Out : 12 secs.  
Hoist Line Speed : 53 m/min.  
Steering (lock to lock) : 6 secs.

## STANDARD EQUIPMENT

- Front Bumper
- Lift Ram Guard
- Tool Kit
- Front and Rear Lights
- Reflectors and Side Indicators
- Mobile Charger
- Rear & Side View Mirrors – 2 nos
- Standard Gauges

## OPTIONAL EQUIPMENT

- Spark Arrestor
- Fire Extinguisher
- Extra Hook
- Fog Lamp, Beacon Lights and Spot Lamps
- Tackle Box
- Additional Seat for Co-driver
- Protection valve in the Boom extension line against hose burst