



- stronger than the rest



SG Slurry tankers

Professional SG slurry tankers



The SAMSON SG slurry tankers' design has placed great emphasis on flexibility, manoeuvrability and capacity. SG slurry tankers can be equipped with all SAMSON implements, making it more flexible while extending the tanker's work range. The slurry tanker has a superb manoeuvrability as the trailer is extremely compact with a very small turning radius. Capacity remains uncompromised thanks to loading and unloading using the highly efficient SAMSON fully hydraulic transmission, which provides a pressure as high as 360 bar. The discharge pump is a centrifugal pump equipped with a special pump wing, which compared to a standard pump wing reaches maximum power at lower revs. The pump thereby reduces fuel consumption of the tractor.

The "swan neck" (the drawbar) is height adjustable and can therefore be adapted for tractors, where the drawbar ball is positioned at different heights.

The tanker transfers considerable weight to the tractor's draw ball, as much as 10,200 kg. on the SG 28. This impressive weight transfer means that the tractor has a fantastic grip in the soil and more efficient pulling of the tanker. When the tractor has a good grip in the soil it also reduces damaging wheel slippage essentially.

If the slurry is spread in a very hilly terrain SAMSON hydraulic wheel drive is the obvious choice. The wheel drive transmits 70 HP to the slurry tankers' wheel, which thereby helps to pull the tanker. Even under extreme conditions the tanker can force hills, when the wheel drive is engaged. Therefore, it is now possible to spread slurry in areas where it previously was not possible.

SAMSON SG is factory fitted with electronic filling restriction/weight limit. This computer-controlled loading system can be set to only load a given quantity of slurry in the tanker. Filling stops automatically, when the desired amount is reached for easy control of the vehicle weight.

All the slurry tankers' functions are controlled by SAMSON's computer control SlurryMaster 6000. In the control all functions of the tanker can be controlled either from the control panel or with SM Joystick.

The SG slurry tanker is produced in two models: SG 23 with 22.6 m³ and SG 28 with 27.8 m³.



Standard and optional equipment for SG tankers

Part of the equipment, standard or optional, on the SG slurry tankers is described below. For a complete list of standard and optional equipment, please see table overleaf.

Standard equipment



SlurryMaster 6000 with SM Joystick

The most advanced dosing computer on the market. It keeps track of current values and miscellaneous application data. SlurryMaster 6000 offers control of all the slurry tanker's hydraulic functions. The SM Joystick makes operation of the slurry tanker much easier and more ergonomic, including the "Dog Walk" features.



Electronic wheel steering

The SAMSON SG slurry tanker has electronic wheel steering fitted as standard which makes manoeuvring of the tanker much easier. Three-axle tankers feature wheel steering of both the front and rear axles, while the two-axle tankers has steering of the rear wheels.



Lift

The SG slurry tanker is fitted with a powerful double-acting lift. It can apply a pressure of up to 5,000 kg on e.g. a grass injector. The lift functions can be controlled automatically via SlurryMaster 6000, which offers integrated and individual depth control, for example for injection in grass.



Optional equipment



Pump system

SAMSON slurry tankers can be supplied with a fully hydraulic pump tower. The pump tower features a return flow line to enable pumping back of foam to the holding tank. The arm on the pump tower has 1 m telescopic extension to increase reach while loading.

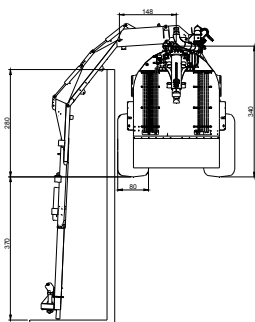
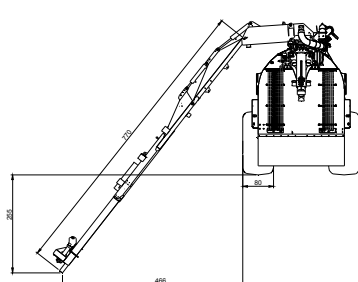
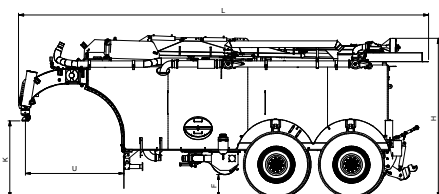
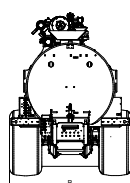
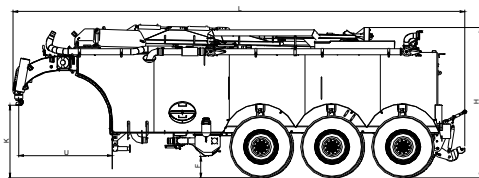
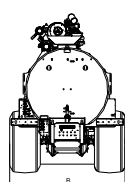
Hydraulic discharge pipe

The hydraulic swing-out discharge pipe is used for transfer slurry between farm containers and holding tanks or buffer tanks on the ground. The hydraulic swing-out discharge pipe opens automatically when unfolded.



SAMSON AGRO A/S
Vestermarksvej 25
DK-8800 Viborg

Tel. +45 87 50 93 00
samson@samson-agro.com
www.samson-agro.com



Slurry tanker size		SG 23	SG 28
Length (m)	(L)	10,29	12,28
Tank diameter (m)		2,2	
Max. height, depending on equipment (m)	(H)	4,0	
Ball height (m)	(K)	1,53 – 1,92	
Opening at neck (m)	(U)	2,46	
Overhead clearance under pump (cm)	(F)	57	
Alliance 650/60-30,5 Diagonal type 328 (m)	(B)	2,73	
Alliance 650/60-30,5 Radial type 380 (m)	(B)	2,76	
Alliance 750/60-30,5 Radial type 390 (m)	(B)	2,88	
Alliance 850/50-30,5 Radial type 390 (m)	(B)	3,165	
Nokian 710/55 R34 ELS (m)	(B)	2,85	
Nokian 800/50 R34 ELS (m)	(B)	3.03	
Vredestein 750/60 30,5 Flotation Track (m)	(B)	2,985	
Vredestein 850/50 30,5 Flotation Track (m)	(B)	3,17	
Capacity (l)		22.600	27.800
Weight incl. pump tower with oversize wheels (kg)		12.100	14.600
Ball pressure without implements, empty slurry tanker (kg)		3.000	3.700
Ball pressure without implements, full slurry tanker (kg)		8.400	10.200

<ul style="list-style-type: none"> • Standard equipment ◦ Optional equipment - Not possible 	SG 23	SG 28
Pump tower with telescope and return flow	•	•
Hydraulic suspension	•	•
Full hydraulic transmission (integrated high-pressure hydraulics for loading and unloading pump)	•	•
SlurryMaster 6000 dosing computer	•	•
SM JoyStick for control of all vehicle functions (incl. "Dog Walk" function)	•	•
Load Sensing electric hydraulic steering	•	•
Section emptying	•	•
Inspection hatch	•	•
Electronic filling limit / weight limit	•	•
Mechanical level meter	•	•
Electronic wheel steering, 1 axle on SG 23 (rear)	•	-
Electronic wheel steering, 2 axles (front and rear)	-	•
3 point lift, Cat. 3	•	•
Electrically operated lift at back of tanker	•	•
Active lift	•	•
Ø110 mm ball bowl (on tanker)	•	•
Work searchlights, 2 pcs. Xenon 3 pcs. std.	•	•
Toolbox	•	•
Water tank	•	•
Man. Hydraulically operated supports	•	•
Prepared for min. SBX2 - 24 m.	•	•
Prepared for min. SBX2 - 30 m.	-	•
Wheel assembly, Alliance 650/60-30,5 Radial type 380	•	•
Wheel assembly, Alliance 650/60-30,5 Diagonal type 328	◦	◦
Wheel assembly, Alliance 750/60-30,5 Radial type 390	◦	◦
Wheel assembly, Alliance 850/50-30,5 Radial type 390	◦	◦
Wheel assembly, Nokian ELS 710/55-R34	◦	◦
Wheel assembly, Nokian ELS 800/50-R34	◦	◦
Wheel assembly, Vredestein 750/60 30,5 Flotation Track	◦	◦
Wheel assembly, Vredestein 850/50 30,5 Flotation Track	◦	◦
Hydraulic lift for front axle	-	◦
Hydraulic track adjustment, 400 mm on each side	◦	◦
Hydraulic wheel traction with reverse gear 70 HK	◦	◦
Valve system for unloading through return flow	◦	◦
Hydraulically operated swing-out discharge pipe	◦	◦
Air brakes	◦	◦
More powerful brakes 420x180 mm.	◦	◦
Ejector (draws max. 1500 l/min.)	◦	◦
Semi suction	◦	◦
Printer for SlurryMaster 6000	◦	◦
Central lubrication	◦	◦
Monitor system with 2 cameras and 7" colour display	◦	◦