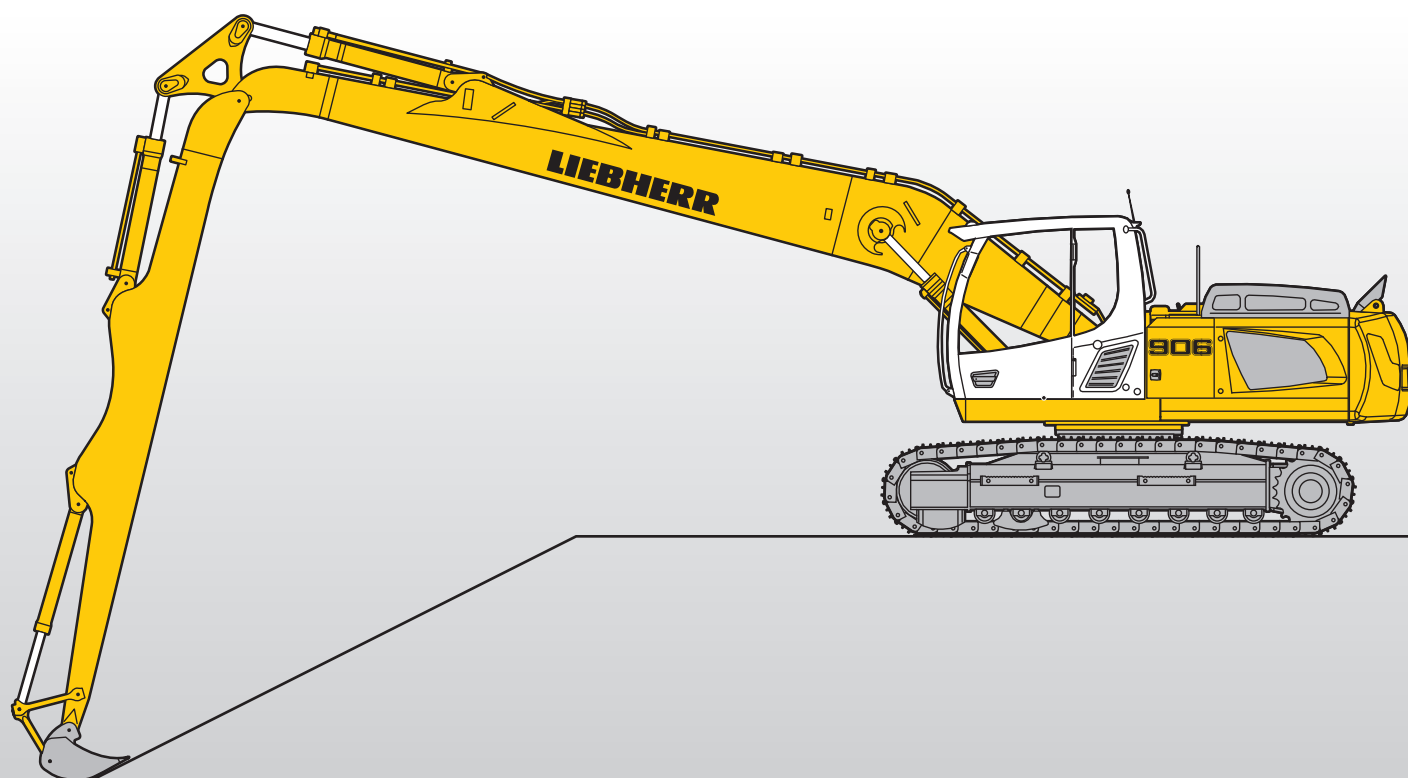


Attachment Information

Advanced

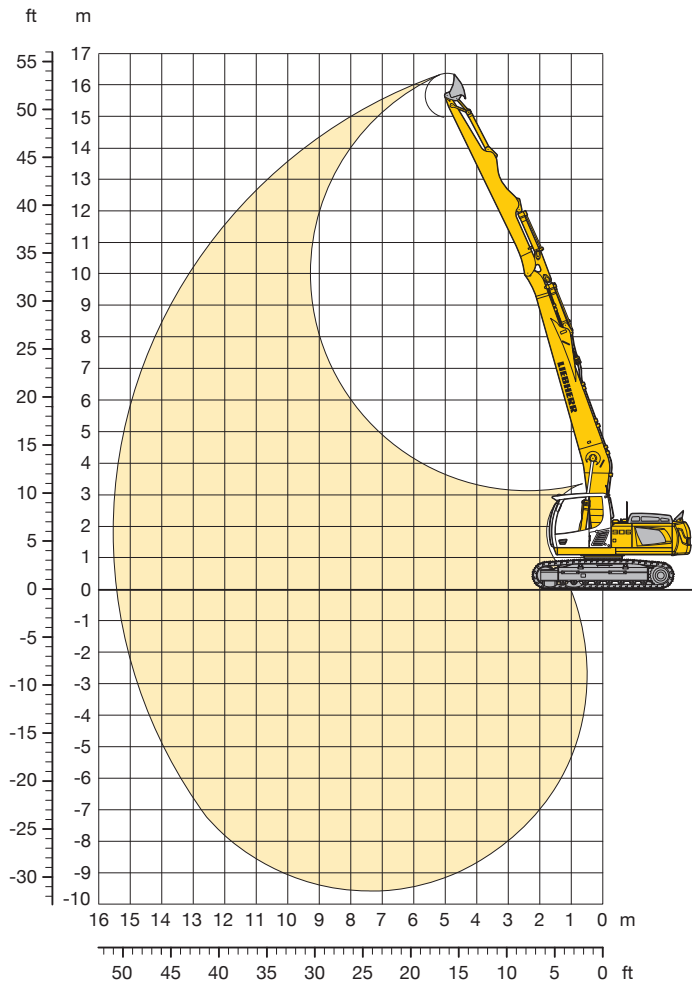
Liebherr Crawler Excavator
with Ditchcleaning Attachment



LIEBHERR

Ditchcleaning Attachment

with Gooseneck Boom 8.50 m for Ditchcleaning Attachment and WLC-Undercarriage



Digging Envelope for Ditchcleaning Bucket

Stick length	m	6.20
Max. digging depth	m	9.60
Max. reach at ground level	m	15.45
Max. dump height	m	15.00
Max. teeth height	m	16.40
Digging force ISO	kN	46.1
	t	4.7
Breakout force ISO	kN	92.4
	t	9.4

Operating Weight and Ground Pressure

Operating weight includes basic machine with counterweight 4.0 t, gooseneck boom 8.50 m for ditchcleaning attachment, stick 6.20 m for ditchcleaning attachment and ditchcleaning bucket 0.45 m³ (200 kg).

Undercarriage		WLC	
Pad width	mm	600	750
Weight	kg	23,950	24,400
Ground pressure	kg/cm ²	0.51	0.41

Ditchcleaning Bucket for Ditchcleaning Attachment


Cutting width SAE	mm	2,000	2,000 ¹⁾
Capacity ISO 7451	m ³	0.45	0.45
Weight	kg	200	370





¹⁾ Ditchcleaning bucket 2 x 45° tiltable

Lift Capacities

with Gooseneck Boom 8.50 m for Ditchcleaning Attachment and WLC-Undercarriage

Stick 6.20 m for Ditchcleaning Attachment

↑ m	Under-carriage	3.0 m		4.5 m		6.0 m		7.5 m		9.0 m		10.5 m		12.0 m		13.5 m				m
15.0	WLC																	3.7*	3.7*	6.60
13.5	WLC									2.6*	2.6*							2.6	2.7*	9.05
12.0	WLC									2.2*	2.2*	2.1	2.2*					1.9	2.2*	10.74
10.5	WLC									2.1*	2.1*	2.1*	2.1*	1.5	1.9*			1.5	2.0*	12.00
9.0	WLC									2.1*	2.1*	2.1*	2.1*	1.6	2.0*			1.2	1.8*	12.97
7.5	WLC									2.3*	2.3*	2.2	2.2*	1.6	2.1*	1.1	1.7*	1.0	1.7*	13.71
6.0	WLC							2.8*	2.8*	2.6*	2.6*	2.1	2.5*	1.6	2.2*	1.1	1.9*	0.9	1.6*	14.24
4.5	WLC					4.4*	4.4*	3.7	3.8*	2.7	3.3*	2.0	2.9*	1.5	2.5	1.1	1.9	0.8	1.6*	14.61
3.0	WLC	12.1*	12.1*	7.4	7.7*	4.8	5.6*	3.4	4.5*	2.5	3.7*	1.9	3.1	1.4	2.4	1.0	1.9	0.8	1.5	14.80
1.5	WLC	4.0*	4.0*	6.2	8.8*	4.2	6.2*	3.0	4.8*	2.2	3.7	1.7	2.9	1.3	2.3	1.0	1.8	0.8	1.5	14.85
0	WLC	3.6*	3.6*	5.5	6.7*	3.7	6.5	2.7	4.6	2.1	3.5	1.6	2.8	1.2	2.2	0.9	1.8	0.8	1.5	14.74
-1.5	WLC	3.8*	3.8*	5.1	5.8*	3.4	6.1	2.5	4.4	1.9	3.4	1.5	2.7	1.1	2.1	0.9	1.8	0.8	1.6	14.47
-3.0	WLC	4.2*	4.2*	5.0	6.0*	3.3	6.0	2.4	4.3	1.8	3.3	1.4	2.6	1.1	2.1	0.9	1.7	0.8	1.6*	14.04
-4.5	WLC	4.7*	4.7*	5.1	6.4*	3.3	5.7*	2.3	4.2	1.8	3.2	1.4	2.6	1.1	2.1			1.0	1.4*	13.42
-6.0	WLC	5.4*	5.4*	5.2	6.1*	3.3	4.9*	2.3	4.0*	1.8	3.2*	1.4	2.5*	1.1	1.7*			1.1*	1.1*	12.59
-7.5	WLC			4.5*	4.5*	3.4	3.8*	2.4	3.1*	1.8	2.4*	1.5	1.7*					1.0*	1.0*	11.32

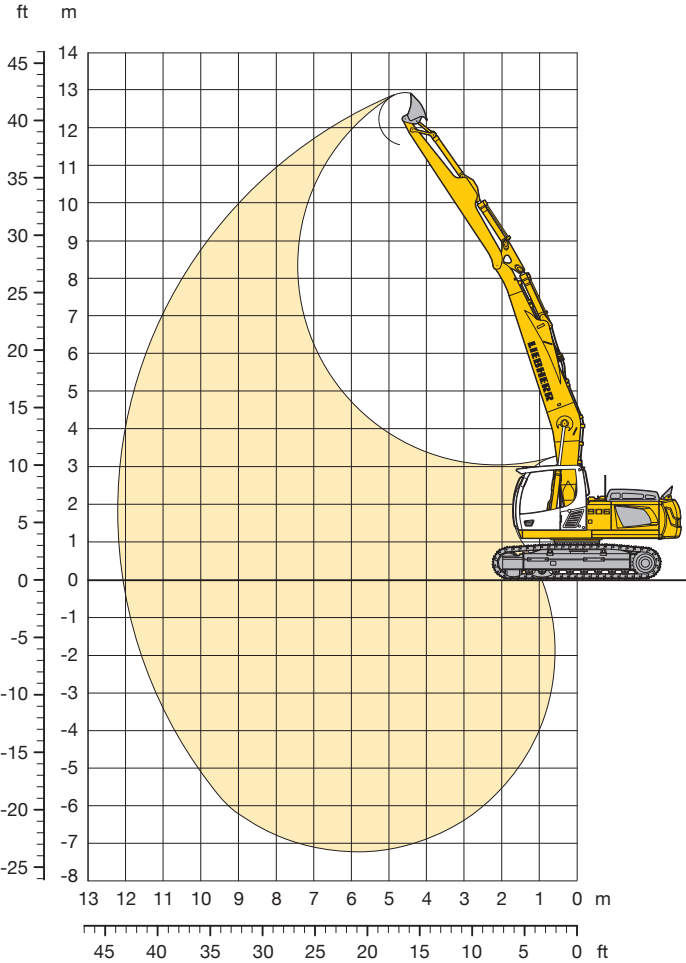
 Height
  Can be slewed though 360°
  In longitudinal position of undercarriage
  Max. reach
 * Limited by hydr. capacity

The lift capacities are stated in metric tonnes (t) on the articulation stick/bucket (bucket's weight included) and can be lifted 360° on firm, level supporting surface. Adjacent values are valid for the undercarriage when in the longitudinal position. Capacities are valid for 600 mm wide triple-grouser pads. Indicated loads are based on ISO 10567 standard and do not exceed 75 % of tipping or 87 % of hydraulic capacity. Without bucket (0.45 m³), the lift capacities will increase by 200 kg, without bucket cylinder, link and lever they increase by an additional 130 kg.

According to European Standard, EN 474-5: In the European Union excavators have to be equipped with an overload warning device, a load diagram and automatic check valves on the hoist cylinders, when they are used for lifting operations which require the use of lifting accessories.

Ditchcleaning Attachment

with Gooseneck Boom 6.80 m for Ditchcleaning Attachment



Digging Envelope for Ditchcleaning Bucket		
Stick length	m	4.60
Max. digging depth	m	7.20
Max. reach at ground level	m	12.05
Max. dump height	m	11.55
Max. teeth height	m	12.90
Digging force ISO	kN	34.1
	t	3.5
Breakout force ISO	kN	92.4
	t	9.4

Operating Weight and Ground Pressure					
Operating weight includes basic machine with counterweight 4.0 t, gooseneck boom 6.80 m for ditchcleaning attachment, stick 4.60 m for ditchcleaning attachment and ditchcleaning bucket 0.45 m³ (200 kg).					
Undercarriage		LC		WLC	
Pad width	mm	600	750	600	750
Weight	kg	23,100	23,550	23,150	23,600
Ground pressure	kg/cm²	0.49	0.40	0.49	0.40


Ditchcleaning Bucket for Ditchcleaning Attachment					
Cutting width SAE	mm	2,000		2,000 ¹⁾	
Capacity ISO 7451	m³	0.45		0.45	
Weight	kg	200		370	





¹⁾ Ditchcleaning bucket 2 x 45° tiltable

Lift Capacities

with Gooseneck Boom 6.80 m for Ditchcleaning Attachment

Stick 4.60 m for Ditchcleaning Attachment

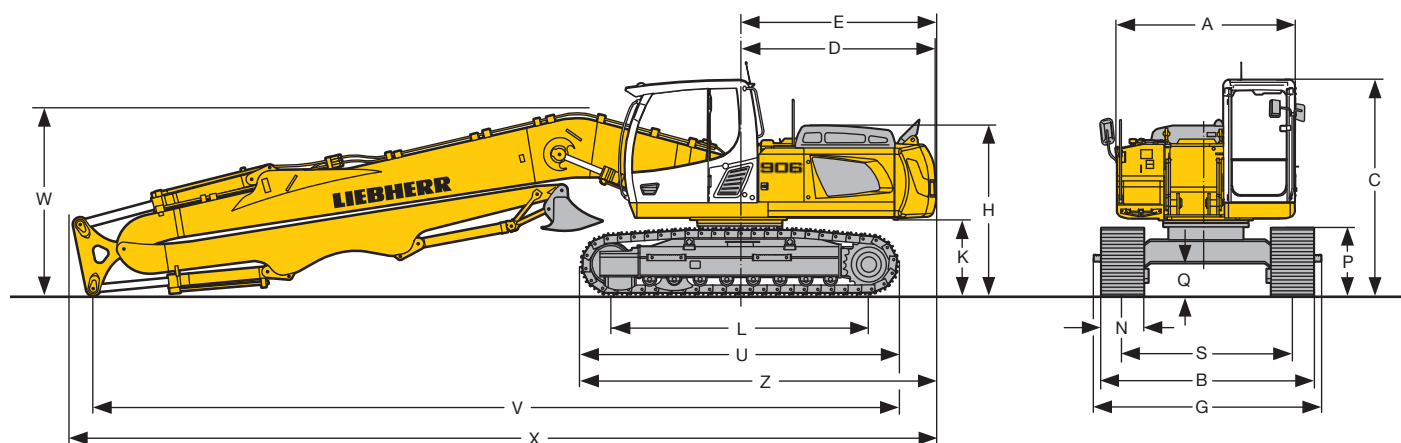
↑ m	Under-carriage	3.0 m		4.5 m		6.0 m		7.5 m		9.0 m		10.5 m		12.0 m		13.5 m				m
12.0	LC																	3.6*	3.6*	5.09
	WLC																	3.6*	3.6*	
10.5	LC							2.5*	2.5*									2.6*	2.6*	7.43
	WLC							2.5*	2.5*									2.6*	2.6*	
9.0	LC							2.4*	2.4*	2.3*	2.3*							2.2*	2.2*	8.92
	WLC							2.4*	2.4*	2.3*	2.3*							2.2*	2.2*	
7.5	LC							2.4*	2.4*	2.3*	2.3*							2.0*	2.0*	9.96
	WLC							2.4*	2.4*	2.3*	2.3*							2.0*	2.0*	
6.0	LC							2.6*	2.6*	2.4*	2.4*	2.0*	2.0*					1.9*	1.9*	10.69
	WLC							2.6*	2.6*	2.4*	2.4*	2.0*	2.0*					1.9*	1.9*	
4.5	LC					3.7*	3.7*	3.2*	3.2*	2.8*	2.8*	2.1	2.3*					1.8	1.8*	11.17
	WLC					3.7*	3.7*	3.2*	3.2*	2.8*	2.8*	2.2	2.3*					1.8*	1.8*	
3.0	LC	13.7*	13.7*	7.6	8.7*	5.0	6.6*	3.5	4.4*	2.7	3.3*	2.0	2.5*					1.7	1.8*	11.43
	WLC	13.7*	13.7*	8.1	8.7*	5.3	6.6*	3.8	4.4*	2.8	3.3*	2.2	2.5*					1.8*	1.8*	
1.5	LC	4.4*	4.4*	6.9	10.1*	4.6	7.3*	3.4	5.5	2.5	4.1*	2.0	2.8*					1.7	1.9*	11.49
	WLC	4.4*	4.4*	7.4	10.1*	4.9	7.3*	3.6	5.5	2.7	4.1*	2.1	2.8*					1.8	1.9*	
0	LC	3.9*	3.9*	6.4	8.4*	4.3	7.4	3.2	5.3	2.5	4.1	1.9	3.0*					1.7	2.0*	11.35
	WLC	3.9*	3.9*	6.9	8.4*	4.6	7.4	3.4	5.3	2.6	4.1	2.1	3.0*					1.8	2.0*	
-1.5	LC	4.2*	4.2*	6.2	7.3*	4.2	7.3	3.1	5.2	2.4	4.0	1.9	3.0*					1.8	2.1*	11.00
	WLC	4.2*	4.2*	6.7	7.3*	4.5	7.3	3.3	5.2	2.6	4.0	2.0	3.0*					1.9	2.1*	
-3.0	LC	4.8*	4.8*	6.2	7.8*	4.1	7.2	3.0	5.2	2.4	4.0	1.9	2.2*					2.0	2.3*	10.42
	WLC	4.8*	4.8*	6.7	7.8*	4.4	7.2	3.2	5.2	2.5	4.0	2.1	2.2*					2.1	2.3*	
-4.5	LC	5.8*	5.8*	6.3	8.0*	4.2	6.2*	3.1	4.8*	2.4	3.5*							2.2	2.7*	9.56
	WLC	5.8*	5.8*	6.8	8.0*	4.5	6.2*	3.3	4.8*	2.6	3.5*							2.4	2.7*	
-6.0	LC			5.7*	5.7*	4.3	4.5*	3.2	3.2*									2.6*	2.6*	8.01
	WLC			5.7*	5.7*	4.5*	4.5*	3.2*	3.2*									2.6*	2.6*	

 Height
  Can be slewed though 360°
  In longitudinal position of undercarriage
  Max. reach
 * Limited by hydr. capacity

The lift capacities are stated in metric tonnes (t) on the articulation stick/bucket (bucket's weight included) and can be lifted 360° on firm, level supporting surface. Adjacent values are valid for the undercarriage when in the longitudinal position. Capacities are valid for 600 mm wide triple-grouser pads. Indicated loads are based on ISO 10567 standard and do not exceed 75 % of tipping or 87 % of hydraulic capacity. Without bucket (0.45 m³), the lift capacities will increase by 200 kg, without bucket cylinder, link and lever they increase by an additional 130 kg.

According to European Standard, EN 474-5: In the European Union excavators have to be equipped with an overload warning device, a load diagram and automatic check valves on the hoist cylinders, when they are used for lifting operations which require the use of lifting accessories.

Dimensions



	LC			mm	WLC			mm
A				2,500				2,500
C				3,047				3,047
D				2,770				2,770
E				2,790				2,790
H				2,402				2,402
K				1,095				1,095
L				3,648				3,648
P				955				955
Q				460				460
S				2,250				2,380
U				4,510				4,510
N	500	600	750		500	600	750	
B	2,810	2,850	3,000		2,974	2,980	3,130	
G	2,810	2,850	3,110		2,974	2,980	3,274	
Z				5,030				5,030

Gooseneck Boom 8.50 m for Ditchcleaning Attachment, Stick 6.20 m for Ditchcleaning Attachment and WLC-Undercarriage		mm
V		12,150
W		2,600
X		12,300

Gooseneck Boom 6.80 m for Ditchcleaning Attachment, Stick 4.60 m for Ditchcleaning Attachment for LC- or WLC-Undercarriage		mm
V		9,500
W		2,500
X		10,400

Liebherr-France SAS

2 avenue Joseph Rey, B.P. 90287, F-68005 Colmar Cedex

+33 389 21 30 30, Fax +33 389 21 37 93

www.liebherr.com, E-Mail: info.lfr@liebherr.com