

## JS290 TRACKED EXCAVATOR



A Product of Hard Work



# The automatic choice for power and performance

PRODUCT WALKAROUND..... **PAGE 4 & 5**  
SUPERB OPERATOR ENVIRONMENT .....**PAGE 6**  
ALL-ROUND VISIBILITY AND OPTIMUM PERFORMANCE .....**PAGE 7**  
MAXIMUM PRODUCTIVITY .....**PAGE 8**  
MORE POWER, LESS FUEL .....**PAGE 9**  
MAINTENANCE MADE EASY .....**PAGE 10**  
BUILT TO LAST.....**PAGE 11**  
ALL THE ATTACHMENTS YOU NEED .....**PAGE 12**  
SPECIFICATION .....**PAGE 13**





### Excellent all-round visibility

- Large glass areas for closer working.
- Low-level engine cover for excellent rear visibility.
- Easy-open, gas-strut-assisted front window.

### Auto mode for optimum performance

- Advanced Management System controls all major functions.
- Four operating modes: Auto, Economy, Precision and Lifting.
- Auto mode automatically switches between maximum power and economy for fuel efficiency.

### State-of-the-art hydraulics

- Increased hydraulic flow and pressure for greater power.
- Regenerative system for faster cycle times and reduced fuel consumption.
- Cushion control on boom and dipper as standard.





### **Superb operator environment**

Ergonomic high-back seat for superior comfort.

Easy-to-use, clearly marked controls.

Optional climate control.

### **Easy access to all areas**

Ground-level access for easy servicing and reduced downtime.

All components in accessible areas.

Engine sump reached via hinged belly plate.

### **Highly efficient Tier 3 engine**

25% more power and 27% more torque than previous engine.

Greater reductions in fuel consumption.

Reduced noise and vibration.

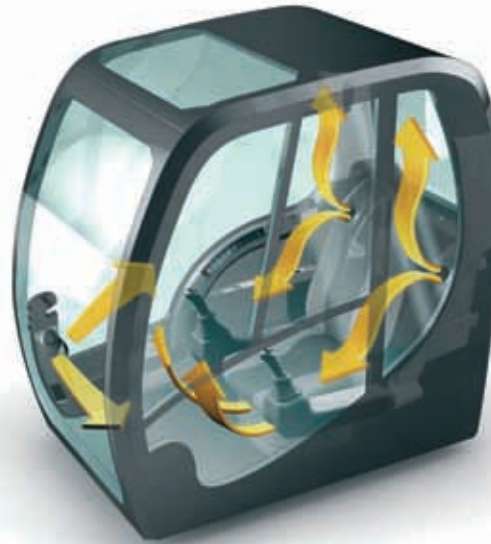
## Superb operator environment

As with all the models in the JS Auto range, meticulous attention to detail has been applied to every inch of the JS290's cab. It is JCB's most stylish and well designed cab to date, with everything from the comfortable seat and servo controls positioning, to the handy radio mute button; all created for maximum ease of use and comfort.



### Ergonomic, practical, comfortable

A comfortable, fully adjustable seating position reduces operator fatigue while the high-backed suspension seat (as standard) provides excellent support. Behind the seat is a practical, net-covered shelf that is large enough for a lunch bag. A huge door provides easy access to the cab, with a completely flat floor suitable for easy cleaning.



### Climate control

Excellent heating and ventilation ensure ideal working conditions. Variable blower speed, temperature and recirculation controls are all well marked out and simple to use. An optional climate-control system and heated, air-suspended seat are also available.

### ISO servo controls

All controls are clear and easy to use. The excavator boom and dipper are servo-lever operated to ISO control pattern, independently adjustable to the seat. The joystick-mounted track gear selection makes changing travel speed easier, while the engine speed is controlled by a dial-type throttle plus servo-lever-mounted, one-touch idle control or selectable auto-idle with adjustable time delay. Secondary control switches are banked to the side of the levers so there is no need to turn around to activate the controls.



## All-round visibility and optimum performance

Thanks to the large glass areas and carefully designed front, side and roof lights, operators can enjoy excellent digging, loading and positioning visibility – even in conditions that demand close working. Inside the cab, all major functions are controlled by JCB's Advanced Management System (AMS). This on-board computer ensures maximum productivity at minimum operating cost by matching the engine and hydraulic system output to operator demand.

### Gas-strut-assisted front window

The JS290 cab presents a clear view overhead, enhanced by the positioning of the wiper motor. The front screen is very smooth to operate. The lower screen stores easily and securely within the top screen frame, while the complete front is gas-strut assisted for fast and convenient use. A roller blind protects from glare through the front or top screens.

### Large wiper area

The upper-screen, parallelogram-shaped wash wiper ensures a large, excellently wiped area for maximum visibility. The wiper motor is fitted in the left-hand side of the roof screen to avoid obstructing views of the bucket.

### Excellent visibility to left and right

With no obstructive cab structures to get in the way, there is high visibility of both tracks; particularly to the edge of the front right track. To the rear, the new, sleek low-level engine cover also gives excellent visibility.



### Clear and easy to use

The JS290 has four working modes for maximum control and efficiency, all available at the touch of a button. The AMS monitor itself is compactly designed with a clear, easy-to-use interface, featuring: antiglare screen, clock, message display area, power mode indicator, operational hours display, warning lamps, track gear indicator, gauges for fuel, water temperature and hydraulic temperature.

### Records service data

The AMS records all the machine's key operating data, helping diagnose any problems and proving invaluable when it comes to selling on. Increased diagnostics, without the need for a PC, make servicing easier and quicker. Records can be downloaded to a computer if needed.

### Cushion control

The ends of the main boom and dipper arm hydraulic rams are cushioned to prevent shock loadings, protecting your machine and making it more comfortable to operate. For convenience and efficiency, the cushion control is always on until deactivated. Deactivating cushion control gives faster cycle times for maximum productivity.



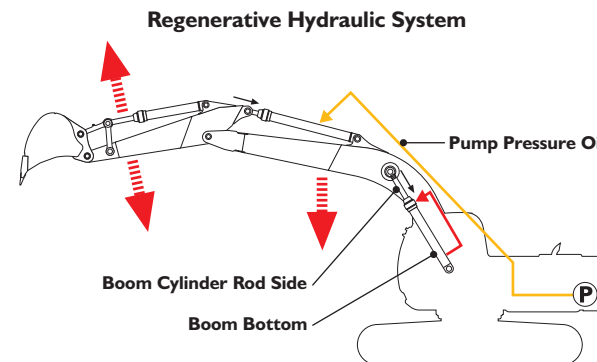
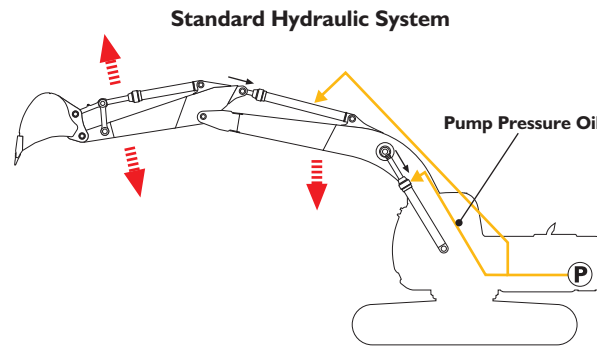
# Maximum productivity

Components engineered in Japan have the edge when it comes to precision work, so that's where the main hydraulic parts are from. They give you increased flow and pressure, which in turn increase available power and speed for improved dipper and bucket dig force.

Mode	Benefit
Auto	For heavy digging and high-output applications. It automatically switches between maximum power and economy depending on the hydraulic load.
Economy	Gives you maximum fuel efficiency in normal digging conditions by reducing maximum hydraulic pressure, hydraulic flow and engine rpm.
Precision	Further reduces hydraulic flow and engine rpm, giving you more control and accuracy for fine work and grading.
Lifting	Gives maximum power with reduced oil flow for controllability.

### Increased hydraulic flow

The JS290 features a variable flow load sensing system with flow on demand, variable power output and servo-operated, multifunction open centre control, designed to provide increased flow and pressure. It is a regenerative system where oil is recycled, giving faster cycle times and reduced fuel consumption.



### Faster truck loading

For optimum productivity, the JS290 has better controllability and much more evenly matched working speeds for the boom and arm. Boom/slew priority as standard speeds up truck loading.

### More dipper and dig force

High hydraulic flow and pressure also ensure maximum dipper force, drawbar pull and bucket dig force for greater performance. The maximum dipper tearout is 164kN, while maximum bucket tearout is 230kN.

The JS290 comes with a 6.2m mono boom for easy transportation and greater lift capacity. The boom is available with a choice of dipper lengths – short 2.5m, medium 3.1m or long 3.7m – to suit the requirements of reach, dig-depth, loadover height, tearouts and site versatility. Reserve strength is built into the fully welded structures for hydraulic hammer and other arduous operations.





# More power, less fuel

The JS290's 7.8-litre, 6-cylinder Isuzu engine provides high power and torque combined with low fuel consumption and noise levels. All while meeting the latest Tier 3 clean emissions legislation.

### Increased power and torque

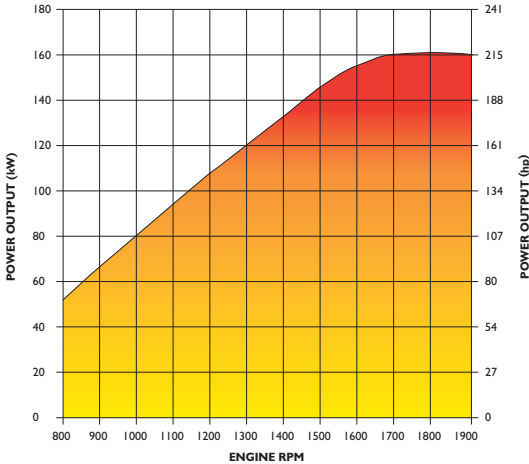
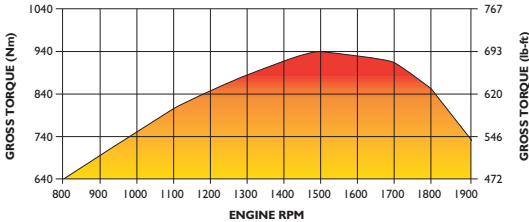
The Isuzu AH-6HK1X turbo diesel 6-pot engine produces 161kW (216hp) at 1800rpm. This power is achieved through an isochronous electronic governor which reacts automatically to hydraulic system demand, maintaining the ideal engine output for a given operating condition.



### High fuel efficiency

Achieving Tier 3 legislation, combined with electronic governing results in low fuel consumption per kilowatt hour. The machine's regenerative hydraulic system, combined with either the Advanced Management System's Auto or Economy mode when appropriate also results in fuel savings.

JS290 POWER AND TORQUE  
ENGINE PERFORMANCE CURVE



### Improved cold start

A variable-speed cooling fan (EU only) is used for quicker engine warm up, with the added benefit of reducing noise levels. Machine auto warm up as standard also maximises performance in cold conditions.

### Low noise and vibration

The Isuzu AH-6HK1X Tier 3 not only produces low emission levels but also low noise and vibration levels. Viscous mounting the whole cab structure also aids noise and vibration reduction.

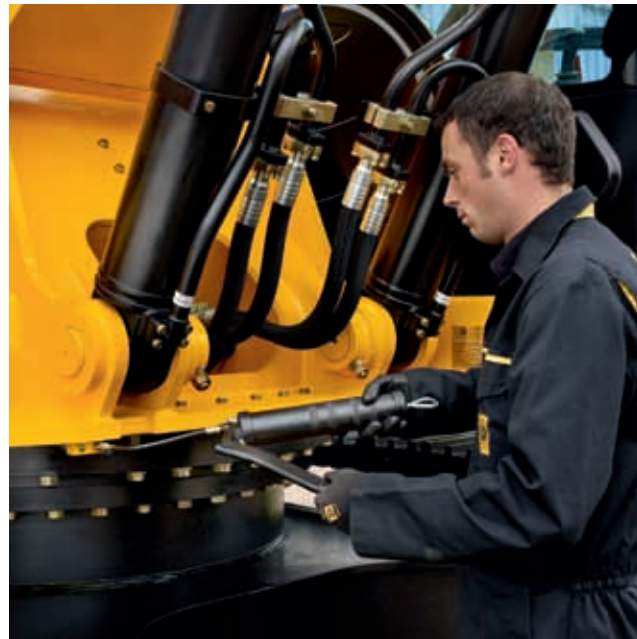


## Maintenance made easy

Fast, efficient maintenance of the JS290 is vital for ensuring the machine's productivity levels remain at their highest. A machine is only as good as its component parts and if one of those components fails, however minor, it can reduce productivity, lower performance or bring the whole machine to a halt. Therefore, it is not only vital to use genuine JCB parts, but also to make sure the entire machine is regularly maintained.

### The Advanced Management System (AMS)

As well as ensuring maximum productivity at minimum operating costs, the AMS also monitors tracking hours and service data, offering diagnostic functions without the need to use a laptop computer. With three entry levels – the operator is only able to access the first level – service and machine data can be safely stored within the machine's computer for future use.



### Ground-level access

Service access on the JS290 is excellent. A hinged belly plate makes getting to the engine sump very simple and there is a quick-fit drain pipe for use on engine-oil and fuel-tank drain plugs. All the steps and top covers are fitted with non-slip, heavy-duty panels.

With the new Tier 3 engine comes true ground-level servicing, including a digital display as part of the in-cab AMS for engine oil checks, and remote engine oil and fuel filters. Ground-level servicing not only reduces downtime but is much safer for technicians working in the field.



### Optimum cooling performance

The JS290's Isuzu engine is designed for longevity and is helped by a bank of high-performing radiators mounted side by side. One is for the engine coolant, while a separate section is for the engine's intercooler. A third section is designed for keeping the hydraulic oil cool. Keeping the engine at the optimum temperature helps maintain performance and reduce downtime. The coolers are easily maintained, accessible via swing-open doors.



## Built to last

Everything about the new JS290 indicates that it is built to last, offering maximum productivity over thousands of operational hours. Every single component has been carefully designed and manufactured to rigorous standards, ensuring long life, lower running costs and a high value when it finally comes to selling.

### Reliable, protected hydraulic components

The JS290 uses high quality, reliable Japanese-made hydraulic components. In turn, these are protected by the highest standard Plexus filtration system, ensuring long hydraulic fluid and component life.



### Modern design

The JS290's modern design incorporates superb damage protection as standard: curved side skirts and a big clearance over the tracks reduce damage to the superstructure; guards shield the undercarriage from debris; and cushion control on boom and dipper services reduces wear and tear on machine parts.

### Regenerative circuits

Regenerative hydraulic systems provide faster cycle times and reduce fuel consumption.

### Easy access

All components in the JS290's superstructure are easily accessible, so it is easier to maintain, which in turn maximises productivity.

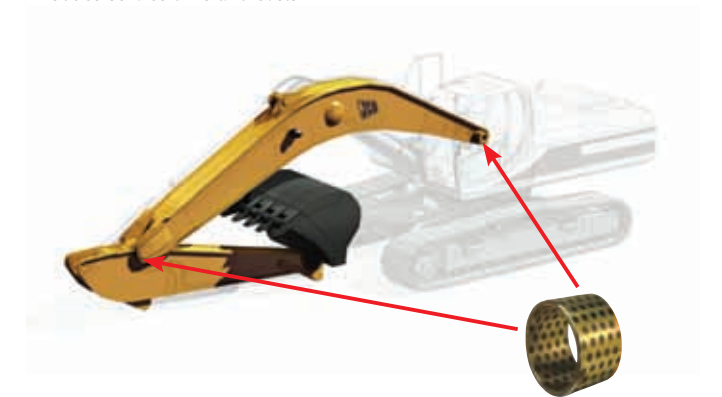


### Greased and sealed for life

Track links are greased and sealed for life, reducing noise and extending operational track life.

### 1000-hour greasing intervals

Both the boom base and dipper pin have 1000-hour greasing intervals to reduce service time and costs.



# All the attachments you need

The JS220's outstanding power, precision control and dipper range make it perfect for a number of environments, from extracting trench boxes to removing sheet piling. For each job, the right tool is needed, and JCB offers a wide range of easily changeable attachments, with different bucket types, hammers, crushers and more.

## QUICKHITCHES

For faster attachment changeover times, resulting in maximum machine and operator productivity, JCB offers a choice of easy-to-use quickhitches:

### Mechanical quickhitch

Featuring a screw locking mechanism complete with a lock plate cover over the screw head. Comes with owner's manual and appropriate safety certificate.



### MPG\* quickhitch

Featuring easy hydraulic operation from within the cab and, for additional safety, a hydraulic check valve and manual locking pin. Also allows bucket mounting in face shovel mode.



### BUG quickhitch

Featuring full hydraulic operation from within the cab, plus a hydraulic check valve and automatic locking device for enhanced safety. Also allows bucket mounting in face-shovel.



### BUCKETS

All JCB buckets are designed for maximum performance and durability:

#### Heavy-duty buckets

Additional weld-in Esco sidecutters assist breakout force, protecting the bucket shell and extending bucket life. Side shrouds and a double-skinned shell provide additional protection and side plate reinforcements increase strength and rigidity.



#### Scoop buckets

Featuring a 100% fill factor design for higher productivity, and class-leading tear out force from the low profile design and sunken pins, with no interference with boom or cab. Choose from general purpose, heavy-duty and extra heavy-duty.



#### Grading buckets

Side reinforcement plates offer additional strength and rigidity while drainage holes reduce weight during operation.

### HAMMERMASTER

Every JCB hammer boasts: a long piston stroke for increased breaking performance; auto-stop function to eliminate damage to the breaker from idle blows; energy recovery for enhanced performance; JCB autogrease fitted as standard; and durable housing incorporating heavy-duty rock claw.



### MULTIPROCESSOR

Available with universal or steel shear jaws, the JCB multiprocessor features hydraulic speed valves to reduce cycle times and ram guards to protect piston rods. The twin-ram, single-jaw pivot design eliminates displacement forces and 360° hydraulic rotation is achieved with break back protection.



### SELECTOR GRABS

The new selector grab range from JCB attachments includes a complete range of seven separate models to mount on both mid-range and heavy-line excavators within the 6-46 tonne range. The new line-up of sorting and demolition grabs provide the perfect solution for jobs involving selection and handling duties. Common applications include industries such as demolition, recycling and any job requiring the handling of waste materials.



\* Please note. Some products are not available in all territories due to regional restrictions.



## ENGINE

Model	Isuzu 6HK1X	
Type	Common-rail direct-injection, water-cooled, turbocharged, intercooled diesel with EGR	
Rated capacity (ISO 14396 (SAE J1995))	kW (hp)	161 (216) @ 1800rpm
Number of cylinders	6	
Bore and stroke	mm (in)	115 x 125 (4.5 x 4.9)
Displacement	litres (in <sup>3</sup> )	7.8 (475)
Battery	2 x 12 volt heavy duty	
Alternator	24V 50A	
Starter motor	24V 4.5kW	
Air filter type	Dry element type with secondary safety element and in-cab warning indicator	
Cooling intercooler	Suction fan with side-by-side water, hydraulic oil and sections and optional swing-out air-conditioning condenser	

## HYDRAULIC SYSTEM

Type	Load-sensing open-centre system	
Additional circuits	A range of additional high- and low-flow circuits can be added depending upon specification	
Main pump	2 axial piston type variable displacement pumps	
Maximum pump flow	l/min (UK gal/min)	2 x 250 (2 x 55)
<b>Relief valve settings</b>		
Implement	bar (lb/in <sup>2</sup> )	373 (5410)
Travel	bar (lb/in <sup>2</sup> )	343 (4975)
Swing	bar (lb/in <sup>2</sup> )	289 (4190)
Pilot circuit	bar (lb/in <sup>2</sup> )	40 (580)

## ENVIRONMENT

Engine emissions	Fully compliant with EU Stage III A and EPA Tier 3 exhaust emissions regulations	
<b>Noise levels</b>		
LwA external	dBA	104
LwA operator ear	dBA	74

## SWING SYSTEM

Type	Axial piston motor	
Swing lock	Hydraulically actuated multi-disc brake integrated with swing motor	
Swing speed	rpm	10
Swing torque	kN (lb/ft)	94 (21132)
Maximum pressure	bar (lb/in <sup>2</sup> )	289 (4192)

## DRIVES AND BRAKES

Steering control	Twin pedal and levers giving independent track control	
Drive method	Hydrostatic	
Travel operation	3-speed with automatic shift between medium and high speed	
Gradeability	70% 35°	
<b>Maximum travel speeds</b>		
Low	kph (mph)	2.2 (1.37)
Medium	kph (mph)	3.2 (1.99)
High	kph (mph)	5.4 (3.36)
Tractive effort	kN (kgf/lbf)	234 (23963/52830)
Brake system	Hydraulically operated discs in each travel motor	

## UNDERCARRIAGE

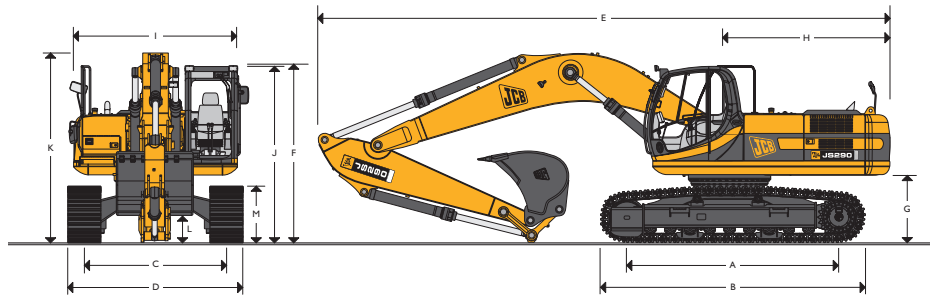
Construction	Fully welded X-frame type with track and central underguarding. Angled side members with top-roller dirt relief holes	
<b>Track assembly</b>		
Type	Greased and sealed for life	
Shoes (each side)	50	
Tension	Combined spring and hydraulic	
Track guides (each side)	2	
<b>Rollers</b>		
Track rollers (each side)	9	
Carrier rollers (each side)	2	

## COOLANT AND LUBRICANT CAPACITY (REFILLING)

Fuel tank	litres (UK gal)	650 (143)
Radiator	litres (UK gal)	38 (8.4)
Engine oil	litres (UK gal)	38 (8.4)
Swing drive	litres (UK gal)	16 (3.5)
Hydraulic tank	litres (UK gal)	145 (31.9)
Final drive (each side)	litres (UK gal)	3.5 (0.8)



STATIC DIMENSIONS – JS290 NLC/LC



Dimensions in millimetres (ft-in)		NLC	LC
A	Track length on ground	3990 (13-1)	3990 (13-1)
B	Undercarriage overall length	4860 (15-11)	4860 (15-11)
C	Track gauge	2390 (7-10)	2600 (8-6)
D	Width over tracks (600mm trackshoes)	2990 (8-6)	3200 (10-6)
D	Width over tracks (700mm trackshoes)	3090 (10-2)	3300 (10-10)
D	Width over tracks (800mm trackshoes)	3190 (10-6)	3400 (11-2)
D	Width over tracks (900mm trackshoes)	3290 (10-10)	3500 (11-6)
Dipper lengths		<b>2.50m (8ft 2in)</b>	<b>3.10m (10ft 2in)</b>
			<b>3.70m (12ft 2in)</b>
E	Transport length with Monoboomb	10557 (34-8)	10544 (34-7)
F	Transport height with Monoboomb	3396 (11-2)	3480 (11-5)
			3314 (10-10)
G	Counterweight clearance	1204 (3-11)	
H	Tailswing radius	3000 (9-10)	
I	Width of superstructure	2990 (9-10)	
J	Height over cab	3188 (10-6)	
K	Height over grab rail	3174 (10-5)	
L	Ground clearance	550 (1-10)	
M	Track height	1003 (3-3)	

WEIGHTS AND GROUND BEARING PRESSURES

Figures include 6.2m (20ft 4in) monoboomb, 3.1m (10ft 2in) arm, 1.245m<sup>3</sup> (1.63yd<sup>3</sup>) (979kg (2158lb)) bucket, full fuel tank and operator.

Track plate width	mm (in)	600 (24)	700 (28)	800 (31)	900 (35)
Machine weight	kg (lb)	30488 (67215)	30838 (67986)	31040 (68432)	31242 (68877)
Ground bearing pressure	kg/cm <sup>2</sup> (lb/in <sup>2</sup> )	0.65 (9.24)	0.56 (8.01)	0.50 (7.05)	0.44 (6.31)

BUCKET AND ARM FORCE

Arm length		2.50m (8ft 2in)	3.10m (10ft 2in)	3.70m (12ft 2in)
Bucket digging force	kN (lbf)	207.0 (46535)	207.0 (46535)	207.0 (46535)
Bucket digging force at power boost	kN (lbf)	226.0 (50807)	226.0 (50807)	226.0 (50807)
Arm crowd force	kN (lbf)	153.8 (34576)	129.7 (29158)	108.0 (24279)
Arm crowd force at power boost	kN (lbf)	163.9 (30846)	138.2 (21069)	115.1 (25876)

STANDARD EXCAVATING BUCKETS

JS 290 Bucket and arm combination								
Bucket width	mm (in)	900 (35)	1000 (39)	1200 (47)	1350 (53)	1500 (59)	1600 (63)	1800 (71)
Bucket capacity	m <sup>3</sup> (yd <sup>3</sup> )	0.85 (1.11)	0.98 (1.28)	1.245 (1.63)	1.45 (1.9)	1.49 (1.95)	1.61 (2.1)	1.845 (2.41)
Bucket weight	kg (lb)	921 (2030)	974 (2147)	1107 (2441)	1228 (2707)	1252 (2760)	1304 (2875)	1420 (3131)
Dipper length								
2.50m		○	○	○	○	○	●	●
3.10m		○	○	○	●	●	■	-
3.70m		○	○	●	■	■	-	-

○ Material weight up to 1800kg/m<sup>3</sup> (1.35t/yd<sup>3</sup>)

● Material weight up to 1500kg/m<sup>3</sup> (1.13t/yd<sup>3</sup>)

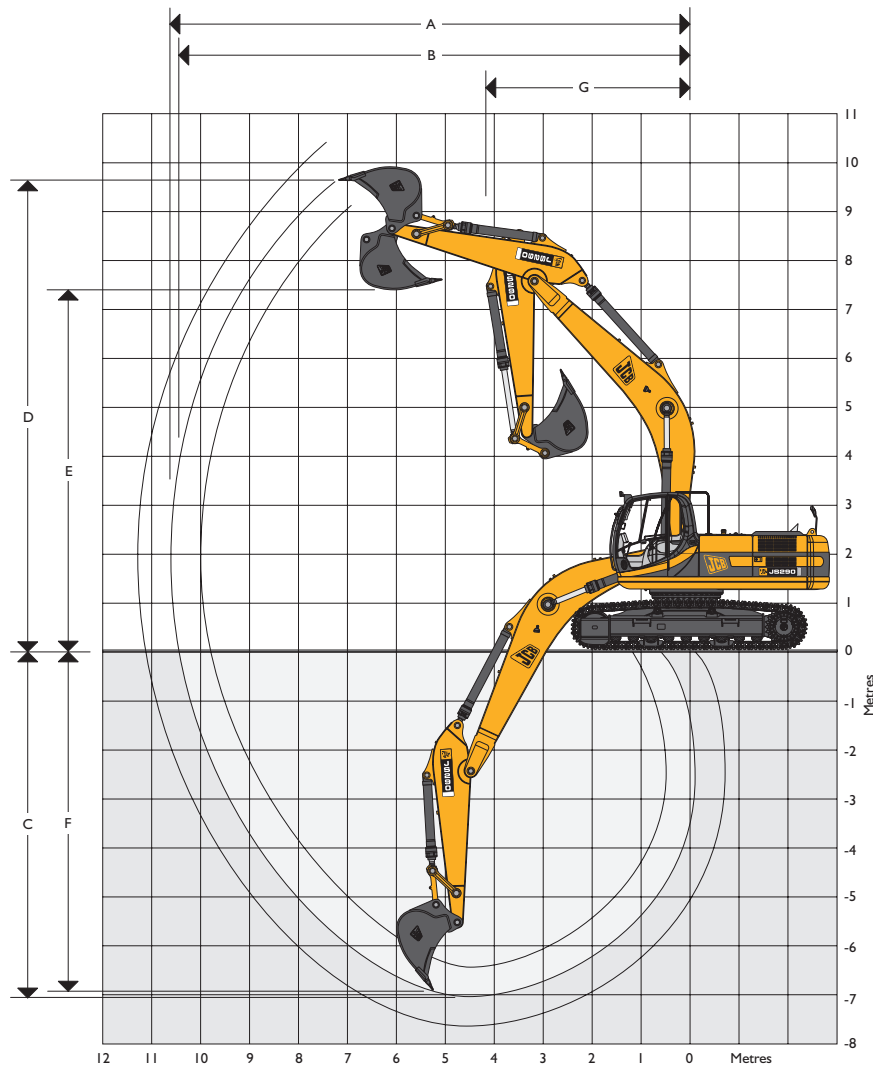
■ Material weight up to 1200kg/m<sup>3</sup> (0.90t/yd<sup>3</sup>)

These recommendations are given as a guide based on typical operating conditions.

Please contact your distributor for the correct selection of buckets and attachments to suit the application.



WORKING RANGE – JS290 NLC/LC



WORKING RANGE – JS290 NLC/LC

Boom length 6.20m (20ft 4in)					
Dipper length			2.5m (8ft 2in)	3.1m (10ft 2in)	3.7m (12ft 2in)
A	Maximum digging reach	m (ft-in)	10032 (32-11)	10607 (34-10)	11261 (36-11)
B	Maximum digging reach (on ground)	m (ft-in)	9810 (32-2)	10398 (34-1)	11005 (36-4)
C	Maximum digging depth	m (ft-in)	6425 (21-1)	7020 (23-0)	7619 (25-0)
D	Maximum digging height	m (ft-in)	9647 (31-8)	10020 (32-10)	10530 (34-7)
E	Maximum dumping height	m (ft-in)	7044 (23-1)	7369 (24-2)	7880 (25-10)
F	Maximum vertical wall cut depth	m (ft-in)	3737 (12-3)	4591 (15-1)	4909 (16-1)
G	Minimum swing radius	m (ft-in)	4196 (13-9)	4165 (13-8)	4059 (13-4)
	Bucket rotation	deg.	185°	185°	185°
	Dipper tearout (ISO 6015)	kN (lbf)	153.8 (34576)	129.7 (29158)	108.0 (24279)
	Dipper tearout with boost (ISO 6015)	kN (lbf)	163.9 (36846)	138.2 (31669)	115.1 (25876)
	Bucket tearout (ISO 6015)	kN (lbf)	207.0 (46535)	207.0 (46535)	207.0 (46535)
	Bucket tearout with boost (ISO 6015)	kN (lbf)	226.0 (56807)	226.0 (56807)	226.0 (56807)



LIFT CAPACITIES – Dipper length: 2.5m, Monoboom: 6.2m, Trackplates: 600mm, No bucket.

JS290 NLC

Load Point	Reach from swing centre																						
	1.0m		2.0m		3.0m		4.0m		5.0m		6.0m		7.0m		8.0m		9.0m		Max. Reach				
Ht.																					mm		
	kg	kg	kg	kg	kg	kg	kg	kg	kg	kg	kg	kg	kg	kg	kg	kg	kg	kg	kg	kg	kg	mm	
8.0m																					8050*	7850	6019
7.0m																					7940*	6200	6908
6.0m																					7940*	5270	7556
5.0m																							
4.0m																							
3.0m																							
2.0m																							
1.0m																							
0m																							
- 1.0m																							
- 2.0m																							
- 3.0m																							
- 4.0m																							
- 5.0m																							

LIFT CAPACITIES – Dipper length: 3.1m, Monoboom: 6.2m, Trackplates: 600mm, No bucket.

JS290 NLC

Load Point	Reach from swing centre																							
	1.0m		2.0m		3.0m		4.0m		5.0m		6.0m		7.0m		8.0m		9.0m		Max. Reach					
Ht.																					kg	kg	mm	
7.0m																								
6.0m																								
5.0m																								
4.0m																								
3.0m																								
2.0m																								
1.0m																								
0m																								
- 1.0m																								
- 2.0m																								
- 3.0m																								
- 4.0m																								
- 5.0m																								

- Lift capacity front and rear.
- Lift capacity full circle.

- Notes:**
1. The above loads are in compliance with SAE and ISO Hydraulic Excavator Lift Capacity Standards.
  2. They do not exceed 87% of hydraulic lifting capacity or 75% of tipping load.
  3. Rated loads marked with an asterisk (\*) are limited by hydraulic capacity rather than tipping load.





LIFT CAPACITIES – Dipper length: 3.7m, Monoboom: 6.2m, Trackplates: 600mm, No bucket.

JS290 NLC

Load Point	Reach from swing centre																							
	1.0m		2.0m		3.0m		4.0m		5.0m		6.0m		7.0m		8.0m		9.0m		Max. Reach					
Ht.	kg	kg	kg	kg	kg	kg	kg	kg	kg	kg	kg	kg	kg	kg	kg	kg	kg	kg	kg	kg	mm			
8.0m															5920*	5920*					3720*	3720*	7713	
7.0m															6120*	6120*	5260*	4950			3530*	3530*	8420	
6.0m															6350*	6230	6400*	4930			3440*	3440*	8956	
5.0m											7080*	7080*	6810*	6080	6650*	4840	5180*	3910			3390*	3390	9353	
4.0m									8990*	8990*	8040*	7520	7430*	5880	7040*	4720	6140	3850			3400*	3390	9627	
3.0m							13610*	13440	10730*	9490	9140*	7180	8150*	5660	7320	4570	6050	3760			3460*	3230*	9789	
2.0m							16390*	12480	12420*	8950	10240*	6840	8830	5430	7160	4430	5940	3670			3560*	3150	9845	
1.0m							14140*	11840	13810*	8520	10960	6550	8610	5240	7010	4290	5850	3580			3730*	3130	9796	
0m					6530*	6530*	13740*	11500	14440	8220	10710	6330	8430	5080	6890	4180	5780	3510			3960*	3170	9642	
- 1.0m			6100*	6100*	9030*	9030*	15450*	11350	14240	8060	10550	6190	8310	4970	6810	4110	5730	3470			4300*	3280	9376	
- 2.0m	7880*	7880*	8960*	8960*	11980*	11980*	18490*	11330	14160	7990	10470	6120	8250	4920	6770	4080					4760*	3480	8989	
- 3.0m	10500*	10500*	12030*	12030*	15520*	15520*	18890*	11400	14180	8010	10470	6120	8250	4920	6800	4100					5450*	3820	8464	
- 4.0m			15590*	15590*	20000*	19480	17730*	11560	14300	8110	10550	6190	8340	4990								6570*	4370	7771
- 5.0m			20060*	20060*	20180*	19910	15860*	11820	12860*	8300	10500*	6360										8530*	5330	6858
- 6.0m							12800*	12240	10160*	8640												8490*	7340	5614

LIFT CAPACITIES – Dipper length: 2.5m, Monoboom: 6.2m, Trackplates: 600mm, No bucket.

JS290 LC

Load Point	Reach from swing centre																							
	1.0m		2.0m		3.0m		4.0m		5.0m		6.0m		7.0m		8.0m		9.0m		Max. Reach					
Ht.	kg	kg	kg	kg	kg	kg	kg	kg	kg	kg	kg	kg	kg	kg	kg	kg	kg	kg	kg	kg	kg	mm		
8.0m												8040*	7920									8050*	7880	6019
7.0m												7800*	7800*									7940*	6220	6908
6.0m												8130*	7820*	7910*	6060							7940*	5290	7556
5.0m							11520*	11520*	9790*	9790*	8810*	7590	8240*	5940	7500	4740						7460	4720	8024
4.0m									11130*	9600	9710*	7300	8760*	5770	7410	4670						6920	4350	8343
3.0m									12960*	9090	10690*	7000	8990	5580	7300	4560						6590	4120	8530
2.0m									14340*	8670	11150	6730	8790	5410	7180	4450						6440	4000	8595
1.0m									14630	8400	19920	6520	8640	5270	7080	4360						6440	3980	8539
0m									14480	8270	10770	6400	8530	5170	7020	4310						6590	4060	8361
- 1.0m							17420*	11680	14430	8240	10710	6340	8480	5130	7010	4300						6950	4260	8052
- 2.0m					15790*	15790*	18550*	11770	14480	8470	10720	6350	8500	5150								7580	4640	7595
- 3.0m					21210-	20000*	17300*	11930	14250	8380	10820	6440										8690	5290	6962
- 4.0m					18690*	18690*	15350*	12190	12670*	8590	10260*	6640										10010*	6510	6094
- 5.0m							12130*	12130*														9890*	9350	4861



LIFT CAPACITIES – Dipper length: 3.1m, Monoboom: 6.2m, Trackplates: 600mm, No bucket.

JS290 LC

Load Point	Reach from swing centre																				
	1.0m		2.0m		3.0m		4.0m		5.0m		6.0m		7.0m		8.0m		9.0m		Max. Reach		
Ht.	kg	kg	kg	kg	kg	kg	kg	kg	kg	kg	kg	kg	kg	kg	kg	kg	kg	kg	kg	kg	mm
8.0m													5920*	5920*					5990*	5990*	6838
7.0m													6970*	6210					5720*	5300	7629
6.0m											7250*	7250*	7110*	6140	6850*	4860			5590*	4610	8219
5.0m											7960*	7710	7520*	6000	7290*	4800			5570*	4160	8650
4.0m							12500*	12500*	10180*	9840	8890*	7410	8100*	5820	7450	4690			5630*	3870	8946
3.0m									11880*	9290	9940*	7090	8780*	5620	7310	4560	6050	3760	5780*	3680	9121
2.0m									13430*	8810	10950*	6780	8820	5420	7170	4440	5970	3690	5790	3570	9181
1.0m									14590*	8460	10950	6540	8630	5250	7050	4320	5900	3630	5780	3550	9129
0m							13270*	11550	14470	8250	10750	6360	88490	5120	6960	4240			5890	3610	8963
- 1.0m					9620*	9620*	16570*	11510	14350	8150	10640	6270	8400	5050	6900	4190			6150	3760	8676
- 2.0m			10570*	10570*	13860*	13860*	19200*	11560	14340	8140	10610	6240	8380	5030	6910	4200			6620	4030	8255
- 3.0m			14760*	14760*	18810*	18810*	18240*	11680	14410	8200	10650	6280	8430	5070					7390	4500	7678
- 4.0m			19690*	19690*	21010*	19860	16700*	11890	13630*	8350	10790	6400							8760	5350	6903
- 5.0m					17720*	17720*	14260*	12220	11590*	8610									9440*	6900	5851

LIFT CAPACITIES – Dipper length: 3.7m, Monoboom: 6.2m, Trackplates: 600mm, No bucket.

JS290 LC

Load Point	Reach from swing centre																				
	1.0m		2.0m		3.0m		4.0m		5.0m		6.0m		7.0m		8.0m		9.0m		Max. Reach		
Ht.	kg	kg	kg	kg	kg	kg	kg	kg	kg	kg	kg	kg	kg	kg	kg	kg	kg	kg	kg	kg	mm
9.0m																			4040*	4040*	6781
8.0m													5920*	5920*					3720*	3720*	7713
7.0m													6120*	6120*	5260*	4970			3530*	3530*	8420
6.0m													6350*	6250	6400*	4950			3440*	3440*	8956
5.0m											7080*	7080*	6810*	6100	6650*	4860	5180*	3930	3390*	3390*	9353
4.0m									8990*	8990*	8040*	7550	7430*	5900	7040*	4740	6170	3860	3400*	3400	9627
3.0m							13610*	13490	10730*	9530	9140*	7210	8150*	5680	7350	4590	6070	3780	3460*	3250	9789
2.0m							16390*	12530	12420*	8980	10240*	6870	8870	5460	7190	4450	5970	3680	3560*	3160	9845
1.0m							14140*	11890	13810*	8550	11010	6580	8650	5260	7040	4310	5880	3600	3730*	3140	9796
0m					6530*	6530*	13740*	11550	14500	8260	10760	6360	8470	5100	6920	4200	5800	3530	3960*	3180	9642
- 1.0m			6100*	6100*	9030*	9030*	15450*	11400	14300	8090	10600	6220	8350	4990	6840	4130	5760	3490	4300*	3300	9376
- 2.0m	7880*	7880*	8960*	8960*	11980*	11980*	18490*	11380	14220	8030	10520	6150	8290	4940	6800	4100			4760*	3500	8989
- 3.0m	10500*	10500*	12030*	12030*	15520*	15520*	18890*	11450	14240	8050	10510	6150	8290	4940	6830	4120			5450*	3840	8464
- 4.0m			15590*	15590*	20000*	19560	17730*	11610	14300*	8140	10600	6220	8370	5010					6570*	4390	7771
- 5.0m			20060*	20060*	20180*	19990	15860*	11887	12860*	8330	10500*	6390							8530*	5350	6858
- 6.0m							12800*	12290	10160*	8670									8490*	7370	5614



STANDARD EQUIPMENT

Isuzu 6HK1X, 6-cylinder, common-rail, turbocharged, intercooled, direct-injection, EU Stage III A and EPA Tier 3 compliant engine
Dual element type air cleaner with in-cab blocked filter warning
Automatic fuel system de-airation
Automatic engine warm up
Engine overheat warning / prevention system
Automatic engine deceleration / idle system
AMS machine monitoring system
4 selectable work modes – Auto, Economy, Lifting and Precision
Remote engine oil level check
Plexus hydraulic oil filtration system
Servo oil filtration
Dual fuel pre-filters with additional engine filter and water separator
3-speed travel
Auto operator cab – pressurised, tinted safety glass with sun visor, opening front window with integrated lower glass storage, operator storage shelf with cargo net, ashtray with cigarette / phone charger socket, mobile phone holder, radio mute switch
High-back suspension operator seat
Overload caution warning system
Horn
Upper and lower guarding
Lockable service doors and engine cover
Frame-mounted toolbox
Remote slew-bearing grease points
Electric refuelling pump with auto-stop
Upper-frame-mounted handrails and non-slip walkways
Boom- and mainframe-mounted worklights
Toolkit
Quick-connect engine oil drain
Remote-mounted easy-access engine and hydraulic oil filters
Cushion control
Operator manual

OPTIONAL EQUIPMENT

NLC and LC undercarriages
600mm, 700mm, 800mm, 900mm track plate width options
2.5m, 3.1m and 3.7m dipper length options
Auxiliary pipework options (high and low flow)
Hose-burst check valves
Tipping-link-mounted lifting points
FOPS level 2 operator protection system
Mesh screen guard
Additional worklights
ISO 32 or ISO 68 hydraulic oil
Biodegradable hydraulic oil
Lower screen wiper
Rain visor (not compatible with FOPS protection or mesh screen guard)
Climate control
Heated and air-suspension high-backed operator seat
Radio
Fire extinguisher
Widecore radiator
Visibowl or Turbo 2 precleaner
P3 or carbon cab air intake filter
Travel alarm
Quickhitch operation pipework
Range of JCB buckets and attachments



JCB Sales Limited, Rocester, Staffordshire, United Kingdom ST14 5JP. Tel: +44 (0)1889 590312 Email: [salesinfo@jcb.com](mailto:salesinfo@jcb.com)

Download the very latest information on this product range at: [www.jcb.com](http://www.jcb.com)

©2009 JCB Sales. All rights reserved. No part of this publication may be reproduced, stored in a retrieval system, or transmitted in any form or by any other means, electronic, mechanical, photocopying or otherwise, without prior permission from JCB Sales. JCB reserves the right to change specifications without notice. Illustrations and specifications shown may include optional equipment and accessories. The JCB logo is a registered trademark of J.C. Bamford Excavators Ltd.